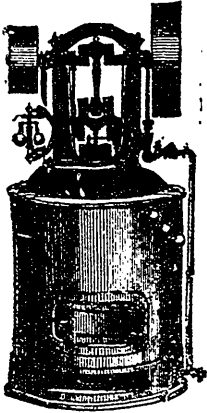


JOSEPH HALL MACHINE WORKS,

ESTABLISHED 1851.

The Joseph Hall Manufacturing Company,
PROPRIETORS.



REASONS WHY

BAXTER'S STEAM ENGINE

Is SUPERIOR to all other Small Power
Engines :

The Boiler is so constructed as to generate the GREATEST AMOUNT OF STEAM.

The Draught is up and down, and up, by which we secure the largest possible amount of HEATING SURFACE.

The Combustion Chamber is large, and PERFECT COMBUSTION ensues.

All the parts are Cylindrical or Circular, consequently can be made *perfectly secure* under any pressure required.

All the Heating surfaces are *below the water line*, hence no liability to burn out the Boiler.

The circulation of the water within the Boiler is perfect, holding all sediment in suspension : so that the same may be blown from the surface ; or by blowing off the Boiler once a week, under pressure, it can be kept perfectly clean.

The Engine is built upon and secured to the Cylinder, all parts being turned and squared by lathes and planers, consequently all parts will fit properly, be in line, and correctly placed one to the other, so that no one of the parts will be thrown out of adjustment by expansion.

The Shaft is the farthest removed from the heat—as it should be ; while the Cylinder and its parts are kept hot by being immersed in the steam. All the adjustment is made before the Engine is placed upon the Boiler.

There are no loose pieces within to become disarranged.

Whenever necessary, the Engine can readily be taken from the Boiler, by simply unscrewing the holding-down bolts.

The Piston can be taken out, or can be adjusted from the top without difficulty.

The small amount of fuel requisite to produce power, and there being no necessity of forcing the fire or getting up intense heat in the furnace, it results—that *the danger is greatly diminished, in fact is far less than in any other Engine*, added to which a fusible plug is placed at the apex of the crown sheet, so that in reality it is impossible to explode it.

Insurance Companies make no extra charge where these Engines are used.

We claim that we have produced *more power with a given amount of fuel than has ever before been realized*, so that the experimental has passed into actual demonstration.

We submit this Engine to the criticism of Engineers, Mechanics, men of science, and the practical business man ; believing that it is the best mechanically, scientifically and practically constructed Engine ever invented.

For further information address—

F. W. GLEN, President,
OSHAWA, ONT.