

Society Brand Clothes
Moderately Priced at
\$20, \$22.50, \$25

Society Brand Suits

The Most Exclusive and the Finest Suits made—every one individually cut and hand-tailored. The very best of Foreign and American woolsens, such that have no equal anyway. Come and let us show you this extensive range. "You'll surely like them!"

Other Stylish Suits \$7.50 to \$20.00

Wiles & Quinlan

The Big 22 Clothing House
Brantford's Greatest Clothiers



J. S. Hamilton & Co.

Brantford—General Agents for Canada and Newfoundland

Electric Restorer for Men If a candle is blown out in an up-Phosphonol restores every nerve in the body ward direction, the wick will not win and vitality. Premature decay and all sexual weakness averted at once. Phosphonol will make you a new man. Price \$1 a box, or two for \$2. Mailed to any address. The Scott's Emulsion Co., St. Catharines, Ont.

Cockshutt United Won From Dufferins

Great Football Fixture Was Puled Off at Mohawk Park on Saturday Evening—Duffs Played Fast Game.

One of the finest exhibitions of football ever seen in Brantford took place. The defense of both teams seemed to be too strong for the forwards and the teams were very evenly matched.

The All Scots football club will hold a special meeting in the Borden club to-morrow night at 8 o'clock. All players, members and others interested, are requested to attend.

BRANTFORD FOOTBALL STANDING

Football League Standing	P. W. L.	D. G. F. G. A. P.
Cockshutt's U.	4 1 1	22 11 10 19
Y. M. C. A.	2 2 2	11 6 6 6
Dufferin R.	2 2 2	10 6 6 6
United Park	2 2 2	10 6 6 6
All Scots	2 2 2	10 6 6 6
Holmesdale T.	2 2 2	10 6 6 6
O. D. E.	2 2 2	10 6 6 6
Praguenos	2 2 2	10 6 6 6
St. Andrew's	2 2 2	10 6 6 6

FROM GREAT LAKES TO THE ROCKIES

Women Sing the Praises of Dodd's Kidney Pills.

Saskatchewan Lady Adds Her Testimony To What Has Already Been Said of the Great Work Dodd's Kidney Pills are Doing.

CAESARVILLE, Sask., June 9. (Special.)—The scarcity of female help in a new country subjects the women of the prairies to unusual strain, and careful observation has established the fact that this strain first makes itself felt in the kidneys.

For this reason Dodd's Kidney Pills are making an enviable reputation from the Great Lakes to the foothills of the Rockies.

Everywhere you will find women singing the praises of the great Canadian kidney remedy that has banished their pains and weariness, and brought them back to health. Among the many is Mrs. Edgar Cowen, an estimable lady of this place.

"I have found Dodd's Kidney Pills very beneficial," Mrs. Cowen states. "If anything I can say will help any sufferer, I am glad to add my testimony to what has already been said."

The kidneys strain all the refuse material out of the blood. If they are out of order this refuse remains in the blood, and becomes poison. That's why sound kidneys mean pure blood and good health. Dodd's Kidney Pills make sound kidneys.

G.T.R. Rail and Lake Route

Commencing on Saturday next, westbound, and on each Monday, Wednesday, and Saturday, thereafter, the Grand Trunk Railway will operate a special Steamboat Express leaving Toronto 10.45 a.m., Hamilton 11.53 a.m., Brantford 12.45 p.m., Woodstock 1.32 p.m., Ingersoll 1.46 p.m., London 2.18 p.m., and Stratford 2.52 p.m., arriving Sarnia wharf at 4.00 p.m., making direct connections with the Northern Navigation Co.'s palatial steamers leaving Sarnia Wharf at 4.15 p.m., for Sault Ste. Marie, Ont., Port Arthur and Fort William.

The Grand Trunk Pacific Railway will inaugurate a new fast service leaving Fort William 4.45 p.m. Mondays, Wednesdays and Fridays, arriving Winnipeg 7.45 a.m. next morning.

Parlor cars and parlor cars and first class coaches between Toronto and Sarnia wharf. Standard Sleeping cars, colonist sleeping cars, dining car and coaches between Fort William and Winnipeg.

Full particulars, reservations on steamers or trains may be obtained from T. J. Nelson, city passenger agent; R. Wright, depot ticket agent, or write C. E. Horning, District Passenger Agent, Union Station, Toronto, Ont.

Stand on a bit of folded carpet or soft cushion while ironing and you will find you do not tire half so easily.

Brantford Business Directory

The Brantford Daily and Weekly Courier appeals to an exclusive clientele. Your card placed in this directory will be an invitation into the best homes. Phone 139 and we will quote you prices

The Gilbert Realty Co.
ROOM 9, TEMPLE BUILDING
Brantford, Ontario

Dr. G. A. Elliott
DENTIST
Cor. George & Dalhousie Sts.

LOOK! LISTEN!
If you want a photo of your house or family taken at home, write or phone AYLIFFE, 1561 Bell.

AYLIFFE'S
320 Colborne St. - Brantford

PLUMBING AND HEATING
Let us figure on your work. We do a general plumbing business and employ none but competent workmen. Brantford Plumbing & Heating Co., 148 Dalhousie St. Phone 169d.

THE TIME TO ENJOY A GOOD OUTING IS HERE
See us for our own make of Bicycles. 100 Vacuum Cleaners, best hand machine on earth, at \$7.00.

Nicholls & Rodjenski
47 Dalhousie St. Bell Phone 1690

JAMES D. ANSELL
Piano Tuner, etc., 165 Erie Avenue.

Testimonials from Conservatory of Music and Academy of Music, Brantford.
Bell Phone 1795.

H. S. PEIRCE
The Leading UNDERTAKER & EMBALMER
75 Colborne Street.
Finest equipment in the city.
Best service at moderate prices.
Attendance day or night.
Both 'phones 300.

Mitchell's Garage
Storage - Accessories - Repairs
55 Darling St., Brantford, Ont

CARTING AND STORAGE
HUNT AND COLTER
Garbage Agents T. H. & B. Ry
STORAGE WAREHOUSE
Hacks, Coupe's and Victoria's
Night and Day Service
Phones 45 and 49.
155 Dalhousie Street

A. CARESWELL & G. JACKSON
62 Grey St.
CEMENT WORK
Sidewalks, Curbs, Cisterns, Cellar Floors, Foundations, etc. Tile Mantels a specialty, also repairing.
Estimates cheerfully given
Machine Phone 384

NEW LAUNDRY
Best hand work done at 181 Market St. A trial solicited. Orders called for and delivered.
Lee Chuey, Proprietor

GET OUR PRICES FOR TIN, LEAD, ZINC, BABBIT SOLDER, SHEET LEAD and LEAD PIPE

The **METAL Co.**
Canada Limited
FACTORIES:
Toronto, Montreal, Winnipeg

Railway Time Tables
GRAND TRUNK RAILWAY
MAIN LINE—GOING EAST

1.45 a.m.—New York Express, daily for Hamilton, Niagara Falls, New York.
5.15 a.m.—Lough Express, daily for Hamilton, St. Catharines, Niagara Falls.
6.50 a.m.—Toronto Express, daily except Sunday for Hamilton, Toronto, Belleville, Kingston, Montreal, Portland, Quebec, Boston.
9.30 a.m.—Express, daily except Sunday for Hamilton, Toronto, Niagara Falls and intermediate points.
10.25 a.m.—Ontario Limited, daily except Sunday for Hamilton and Toronto. Connects at Toronto with express for Barrie, Orillia, North Bay, also for Port Hope, Peterborough and points east.
1.42 p.m.—Atlantic Express, daily for Hamilton, Niagara Falls, Buffalo and points east, also Toronto.
4.35 p.m.—Express, daily except Sunday for Hamilton, St. Catharines, Niagara Falls, Toronto and intermediate stations. Connects at Toronto for Lindsay and Essexboro.
4.40 p.m.—Toronto Express, daily for Hamilton, Toronto, Niagara Falls, Buffalo and New York. Connects at Toronto with express for North Bay, Temagami, Cobalt, New Liskeard and Eganville.
8.15 p.m.—Eastern Flyer, daily for Hamilton, Toronto, Brockville, Ottawa, Montreal, Portland and Boston.

MAIN LINE—GOING WEST

2.27 a.m.—Chicago Express, daily for Woodstock, Sarnia, Port Huron, Detroit and points in Western States, St. Paul, Winnipeg, etc.
5.05 a.m.—Express, daily except Sunday for Woodstock, London, Stratford, Watford, Petrolia, Sarnia, Port Huron, Detroit, Chatham, Windsor, Detroit, Sarnia, and intermediate stations.
8.45 a.m.—Lough Express, daily for London, Petrolia, Sarnia, Port Huron, Detroit, Chatham, Windsor, Detroit, Sarnia, and intermediate stations.
10.05 a.m.—Chicago Express, daily for all trains west, northwest and southwest.
1.00 p.m.—Chicago Express, daily for London, Sarnia, Port Huron, Detroit and Chicago.
3.01 p.m.—Express, daily except Sunday for Paris.
5.15 p.m.—Pacific Express, daily for Paris, Godstoc, London, Petrolia, Chicago and western points.
8.55 p.m.—International Limited—Daily for Woodstock, Ingersoll, London, Chatham, Chatham, Windsor, Detroit, Sarnia, Port Huron, Chicago.

8.10 p.m.—Express, daily except Sunday for Paris, Woodstock, Ingersoll, London and intermediate stations.

GALE, GUYER AND NORTH DIVISION
6.05 a.m.—Daily except Sunday for Harrisburg and St. George.
8.55 a.m.—Daily except Sunday for Harrisburg, Galt, Galt, Palmerston, Durham, Kincardine, Owen Sound, Southampton, Warton and intermediate stations.
11.30 a.m.—Daily except Sunday for Harrisburg, Galt, Palmerston, Durham, Kincardine, Owen Sound, Southampton, Warton and intermediate stations.
4.05 p.m.—Same as the 8.10 a.m.
6.15 p.m.—Daily except Sunday for Harrisburg.

8.30 p.m.—Same as the 11.15 a.m.
BUFFALO AND GONDERICH DIVISION
10.05 a.m.—Daily except Sunday for Paris, Dumbo, Bright, Stratford, Goderich and intermediate stations.
10.05 a.m.—Daily except Sunday for Caledonia, Dunnville, Port Colborne, Black Rock, Buffalo and intermediate stations.
6.00 p.m.—Daily except Sunday for Chicago, Toronto, Port Colborne, Black Rock, Buffalo and intermediate stations.
8.25 p.m.—Daily except Sunday for Paris, Stratford, Goderich and intermediate stations.

BRANTFORD AND TILLSBURG DIV.
10.35 a.m.—Daily except Sunday for Brantford, Norwich, Tillsburg, St. Thomas and intermediate stations.
8.20 p.m.—Daily except Sunday for Brantford, Norwich, Tillsburg, St. Thomas and intermediate stations; arrives 8.50 a.m. and 5.20 p.m.
T. J. NELSON, Proprietor, St. C. P. & T. A.

T. H. & B. RAILWAY DEPARTURES EAST

7.30 a.m.—Daily for Hamilton and intermediate stations, Toronto, Bath, Farry Sound and Muskoka points, Welland, Niagara Falls and Buffalo.
9.03 a.m.—Except Sunday for Hamilton, Toronto, Welland, connects at Buffalo with Empire State Express for Rochester, Syracuse, Albany and New York.
11.30 a.m.—Except Sunday for Hamilton, Toronto and North Bay, Buffalo, Welland.
2.20 p.m.—Except Sunday for Hamilton, Toronto, Welland, Buffalo and New York, Peterboro and Toronto.
6.45 p.m.—Except Sunday for Hamilton and intermediate stations, Toronto, Peterboro, Ottawa, Montreal, Farry Sound, Sudbury, Port Arthur, Winnipeg, Sarnia and New York.

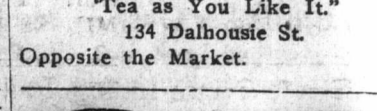
DEPARTURES WEST
9.30 a.m.—Except Sunday for Scotland, Waterford, St. Thomas, Detroit, Chicago and the west.
11.30 a.m.—Except Sunday for Waterford and intermediate points.
4.01 p.m.—Except Sunday for Waterford and intermediate points (except Church's).
7.25 p.m.—Daily for Waterford, Scotland, St. Thomas, Windsor, Detroit and Chicago.

GRAND VALLEY ELECTRIC R.R.
Cars leave for Paris at 7.05 a.m. and every hour thereafter till 10.05 p.m. On Sunday the first car leaves at 8.05 a.m. and then every hour. Cars leave for Paris at 7.05 a.m., 9.05 a.m., 11.05 a.m., 1.05 p.m., 3.05 p.m., 5.05 p.m., 7.05 p.m., and 9.05 p.m. Sunday included.

B. & H. ELECTRIC R.R.
Leave Brantford for Hamilton—8.30, 7.45, 8.45, 9.45, 10.45, 11.45, 12.45, 1.45, 2.45, 3.45, 4.45, 5.45, 6.45, 7.45, 8.45, 9.45, 10.45, 11.45. Those marked * daily except Sunday. All others daily.

A. SPENCE & SON
Carriage manufacturers. We are making a specialty of automobile painting and repairing. This work is being done on the ground floor.
272-282 Colborne St.

THE TEA POT INN
"Tea as You Like It."
134 Dalhousie St.
Opposite the Market.



The Best Place for Good Eye Glasses

Specialist Examinations free of charge
No Drug Store Experiment
OPTICAL INSTITUTE
1 South Market St.

FIRST-CLASS PICTURE FRAMING
If you want a really good job made of your picture framing, satisfactory in design, work and price, bring them to.
Pickels' Book Store, 72 Market St.

BRANTFORD'S DYEING & CLEANING CO.
are now to be found in their new premises, 47 Colborne St.
Office Phone 565. Works Phone 180.
BENNET & SWIFT, Props.

Ladies hair dressing, shampooing, Manicuring and children's hair cutting. Just received a large assortment of the latest style headresses. Prices ranging from 75c. to \$1.50. We also have a large stock of combs, barretts, hairpins and hair nets. Call and see us.
J. Bush & Co., 122 Dalhousie St.

E. C. ANDRICH
Importer
Wines, Liquors, Ales, Porter and Lager.
88 Dalhousie Street.
Bell Phone 9. Auto. Phone 11.

PATTERNS
made in wood, brass, white metal or iron by the very highest class of skilled mechanics; in a pattern shop fully equipped with all the latest improved machinery. Prices right, satisfaction guaranteed, prompt delivery. John H. Hall & Sons, Limited.

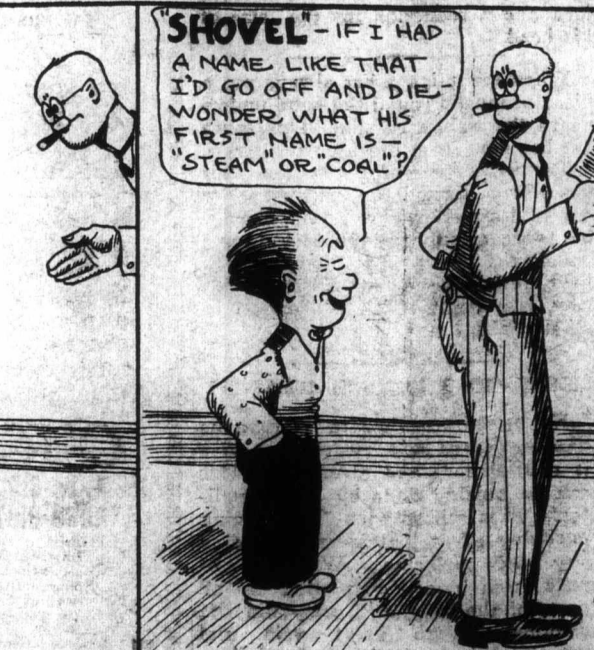
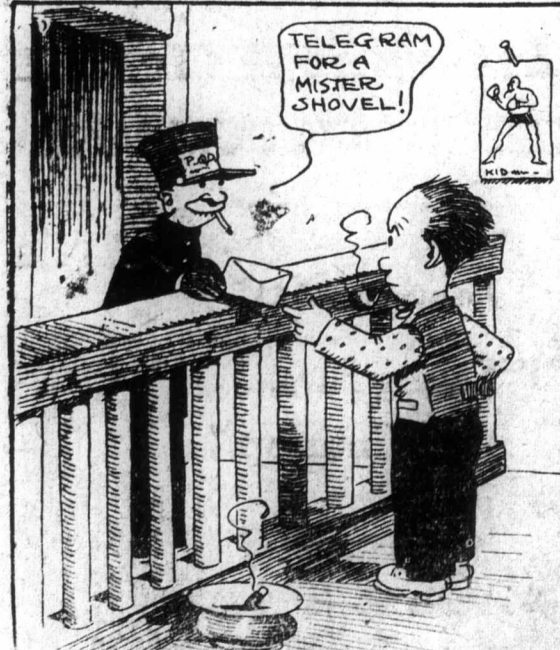
Bell Phone 560 Automatic 560
The Gentlemen's Valet
Cleaning, Pressing, Dyeing and Repairing
Ladies' Work a Specialty
Goods called for and delivered within the shortest notice.
G. H. W. BECK, 132 Market St.

THE BAIRD STUDIO
Everything in Photography
Amateur Developing and Printing.
10, 1-2 Colborne St., Brantford.

H. B. BECKETT
FUNERAL DIRECTOR AND EMBALMER
Removed
from 68 COLBORNE ST.
—TO—
158 DALHOUSIE ST.

First-class Equipment and Prompt Service at Moderate Prices.
Both 'phones—Bell 88, Auto. 28.

SCOOP THE CUB REPORTER



Why Sure---It Has Always Been Scoop And Shovel

By "HOP"

5% Interest
Few investments are so safe as our Guaranteed Mortgages deposited for 5 years or more.
Write for booklet "Most Particulars."

TRUSTS and Compt
43-45 King St.
James J. Warr President
Brantford Branch
T. H. M.

The Merchants
Established 1844
President Sir
Vice-pres
Paid Up Capital and U
Reserve Fund and U
189 Branches and Agencies
cific, Interest allowed on Deposits
at current rate. Cheques on
Farr
Given special attention. Disc
forms supplied. Open Saturdays
Brantford Branch, cor. of Dalh
W.

GRAND TRUNK
New Service Between
Port Arthur, B
STEAMBOATS
Hamilton, G.T.R.
London, G.T.R.
Sarnia Wharf, Port
S. S. Marie, Ont., S. Na
Port Arthur, Port
Port William, Port
Winnipeg, G. T. P. Ry
Parlor-Cafe, Parlor Cars
Sarnia Wharf.
Standard Sleeping cars, also
Sleeping cars (berths free).
Winnipeg.
Commencing June 10th, a
will be operated between Port
This is the inauguration of
two Eastern and Western tra
A special Train will run
commencing June 10th, and
Full particulars, free of charge,
application to Grand Trunk A
T. J. NELSON, G.P.&T.A., Phos
R. WRIGHT, S.T.A. Phone 310

M. E. LONG
Sells the B
Furniture of all kin
Carpets all make
Linoleums, Inl
Draperies in
Shades, all
Upholste
Wicker
Couch
and the famous
M. E. Long Fur
83-85 CO

M. E. LONG
Sells the B
Furniture of all kin
Carpets all make
Linoleums, Inl
Draperies in
Shades, all
Upholste
Wicker
Couch
and the famous
M. E. Long Fur
83-85 CO

M. E. LONG
Sells the B
Furniture of all kin
Carpets all make
Linoleums, Inl
Draperies in
Shades, all
Upholste
Wicker
Couch
and the famous
M. E. Long Fur
83-85 CO

Now and he
---lies your
product has
and a half-
been multi-
want one
must get it.
There are more
world's highway
to their unexce
8675 - touring c
all equipment, p
nulars from Pe
Limited, -or O
ey, 38 Darling S
Walkerville.