

TROUT CREEK SHORTHORNS

SPECIAL OFFERING:

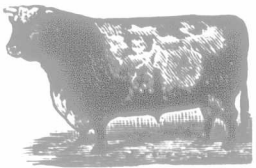
Two imp. bulls with superior breeding and individual merit. Also a few imported Scotch heifers and home-bred bulls and heifers. Send for Catalogue.

JAMES SMITH, W. D. FLATT, on Manager. Hamilton, Ont

W. B. Watt's Sons BREEDERS OF SHORTHORNS and GLYDESDALES

Don't miss the chance to get a grand cow or heifer, in calf to the \$1,200 Scottish Beau (imp.), from the herd that has produced more champions and won more herd prizes than any other herd in Canada. A fine blocky pair of bull calves and a yearling stallion for sale at once. Write for particulars. on Elora Sta., G.T.R. & C.P.R. Salem Post and Tel. Office. Phone connection.

J. E. SMITH.



SHORTHORN BULLS, COWS and HEIFERS,

all ages. Herd headed by Golden Measure (imp.) and Scottish Knight.

CLYDESDALE STALLIONS AND MARES.

Prices and terms to suit. Write or wire

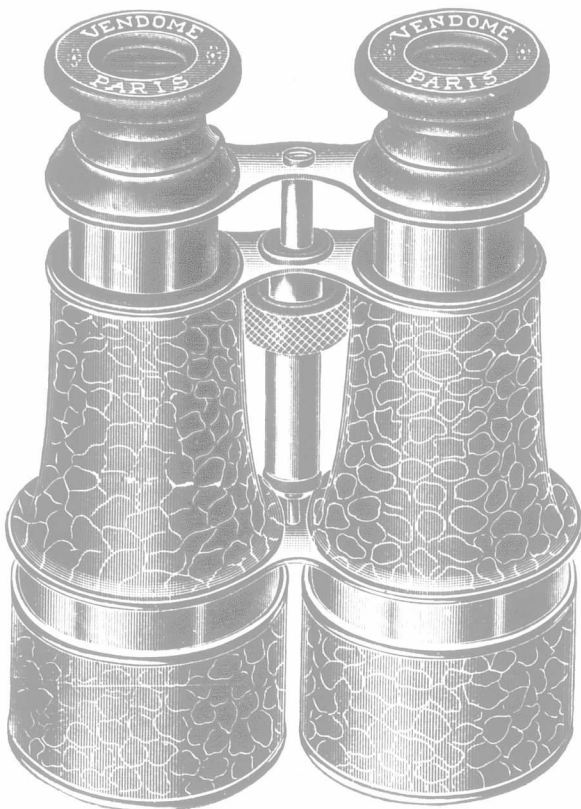
J. E. SMITH, Box 274, BRANDON, MAN.

A NUMBER OF IMPROVED FARMS FOR SALE.

Advertisement for a 21-jewelled gold inlaid watch. Regular Price \$8.00, Special Price \$3.98. Features include a pocket watch with a train scene on the dial, made in France, with a case of solid Alaska silver and richly gold inlaid.

Regular \$10.00 DAY AND NIGHT FIELD GLASSES Only \$3.65 FOR FIELD OR MARINE USE

Buy direct from us and save the Wholesaler's and Retailer's Profits



We offer you this High Grade Field Glass as the equal of anything you could buy from your local dealer at three times the price. It is an exceptionally fine instrument, perfect in workmanship, finish and optical construction, and we can guarantee it to give perfect satisfaction. It measures 9 inches long, when fully extended, is strongly and handsomely made, the trimmings, cross bars and draw tubes being heavily nickel plated and the covering the best grade of brown tan leather, alligator pattern. It is provided with extension sunshades which may be pulled down over the objective lenses thus enabling the Glasses to be used with remarkable results at night and is fitted with 6 specially ground lenses, (the outer one of) of lenses being over 2 inches in diameter, of four times magnifying power, fine definition and great clearness. We could not think of offering this Field Glass at such an extremely low price were it not that we had a large number made specially for us by one of the biggest Field Glass manufacturers in France, during their slack season in the winter. This by buying from us you not only save the Wholesaler's and Retailer's profits but you get the benefit of our close prices, obtained by having our goods made this way. We also give you the same privilege you would have in any store to see and examine the Glasses before paying for them.

SEND NO MONEY

Just your name, address and the name of your nearest Express Office and we will ship the Glasses C.O.D. in a strong waterproof canvas case with leather carrying strap to your nearest Express Office where you can call and EXAMINE AND TEST THEM BEFORE PAYING ONE CENT. Compare them with any Glass you have ever seen at double our price, and if you find them in any respect inferior, you can return them at our expense and we will pay the charges both ways. Can't we make a fairer offer? If you think of the many advantages to be gained by having a powerful Field Glass, of the miles of travel such an instrument will save you every year, of the money you will save by purchasing from us, you will not hesitate to write us. Address: THE NATIONAL TRADING CO., Dept. 3344, Toronto

In answering any advertisement on this page, kindly mention the FARMER'S ADVOCATE.

QUESTIONS AND ANSWERS. Miscellaneous.

GOBBLER AND TURKEYS.

I have six turkey hens and no gobbler, having lost him during the winter. Will it be sufficient to take each hen away to a gobbler once in the season?

Weyburn, Assa. F. C. B. Ans.—Yes; once is sufficient in the case of turkeys.

FEEDING MILCH COWS—PLANTING TREES

I have four cows to which I am feeding a third of a gallon of a mixture of barley and oats, chopped, twice a day. Will it strengthen, fatten, or increase the supply of milk? I am also feeding a small quantity of hay. Am I feeding too much chop?

2. How and when should I plant soft maples from seeds and saplings? SUBSCRIBER.

Ans.—1. No, you are not feeding too much chop; although for milk production, you would derive more benefit from the mixture if as much bran were added in equal proportion. The barley and oat mixture would tend to the laying on of flesh, which the addition of bran would tend to correct.

2. You can plant soft maples, either saplings or seeds, at any time now until the end of the month. It is important to have the ground in good shape. Plant according to directions as given on page 616, April 27th issue.

FOAL WEAK.

One of my mares, about 1,250 lbs., had her first foal the other day, after carrying the foal two weeks over time. The colt was very feeble, and only lived half an hour. It was a big colt and fat, but seemed not fully matured, as it was almost bald on its hind quarters. Its off-side eye was partly gunned up, and one ear was like a thin piece of skin, and quite limp; also no teeth showed through, not even the grinders, and, by the way, it had two splints on its fore legs. The mare had swamp fever for some weeks last October, and about eight days before she foaled she was slightly kicked under the abdomen by a two-year-old while out for exercise. She had not worked since October, only run out on fine days. What do you think would likely cause the feebleness of the foal, the fever at half time, the long labor, or the kick; also the immature eye, ear, etc.? The stallion used was a Clyde, and a big one. The mare being of phlegmatic temperament, do you think a Thoroughbred sire would likely give a vigorous, general-purpose horse. We have a first class Thoroughbred, about 1,300 lbs., imported here this spring, or would a German Coach, also imported this spring, about 1,500 lbs., do better, or would you stick to Clydes? S. Qu'Appelle. PUZZLED.

Ans.—Am rather of the opinion that the mare had typhoid influenza, not swamp fever, which may account for the condition of the foal. Mares in foal are better at steady work right up to foaling time. Their foals are invariably stronger when the dam is kept in vigorous condition by reasonable work. Lack of exercise tends to general flaccidness (or flabbiness) in condition, which would be worse in your mare, as she is cold blooded; you state of a phlegmatic disposition. The weight is little indication to go by as to the sire to select. It depends largely on what you want to get, and the type of your mare. If the mare has much draft blood in her, you would be better to stay with the Clyde; that is, if he is vigorous and chambrimbed. The Thoroughbred you mention possesses substance enough; think the Thoroughbred would be preferable to the Coach, unless the latter had lots of quality and life; but, as we say above, we cannot prescribe a mate without knowing more about the mare; in fact, would want to look her over, and then look over the stallions.

A clergyman, having performed the marriage ceremony for a couple, undertook to write out the usual certificate, but being in doubt as to the day of the month, he asked:

"This is the 9th, is it not?" "Why, parson," said the blushing bride, "you do all my marrying, and you ought to remember that this is only the fourth."

A Lasting Cure of Itching Piles.

A Chronic Case of Unusual Severity and Long Standing Cured by

Dr. Chase's Ointment.

Throughout Canada there are hundreds of cases similar to the one described below in which Dr. Chase's Ointment has proven a positive and lasting cure for the most severe form of itching piles.

Mr. Alex. McLaughlin, for 30 years a resident of Bowmanville, Ont., writes:—"For twenty long years I suffered from itching piles, and only persons who have been troubled with that annoying disease can imagine what I endured during that time. About seven years ago I asked a druggist if he had anything to cure me. He said that Dr. Chase's Ointment was most favorably spoken of, and on his recommendation I took a box. After three applications I felt better, and by the time I had used one box I was on a fair way to recovery. I continued the treatment until thoroughly cured, and I have not suffered any since. I am firmly convinced that the ointment made a perfect cure."

"I consider Dr. Chase's Ointment an invaluable treatment for piles. In my case I think the cure was remarkable when you consider that I am getting up in years, and had been so long a sufferer from the disease."

Dr. Chase's Ointment, 60 cents a box, at all dealers, or Edmanson, Bates & Company, Toronto. To protect you against imitations the portrait and signature of Dr. A. W. Chase, the famous recipe-book author, are on every box.

SHORTHORNS Ardenvale Farm. For sale—Five young bulls, 4 heifers; grand quality. Right prices. J. W. DRYSDALE, Neepawa, Man. Five miles from Arden, 6 miles from Neepawa.



SPRINGBANK STOCK FARM

Five richly-bred Shorthorn bulls for sale, about 14 months old; also some females.

S. R. ENGLISH, Warwick P. O., Alberta.



SHORTHORNS GLYDESDALES

Glen Ross Stock Farm FOR SALE—3 grand low-set bulls, sired by Golden Flame—27, 770=: Golden Prince, 18 months old; Premier Prince, 11 months old; bull calf, 6 months old.

A. & J. MORRISON, close by Homewood Sta., C.N.R. 6 miles from Carman, Man.

Pine Grove SHORTHORNS AND SHROPSHIRE

Our herd comprises over 150 females, including our last importation of 30 head, all of the most esteemed strains. Of Shropshires, we offer a few choice Rams, also high-class Ewes bred to first-class Rams. Address on

W. C. EDWARDS & CO., Rockland, Ont.

MAPLE LODGE STOCK FARM, 1854

Am offering a very superior lot of Shorthorn Bulls and Heifers as well as something VERY attractive in Leicesters.

Choice ewes got by imported "Stanley" and bred to imported "Winchester." Excellent type and quality. on A. W. SMITH, MAPLE LODGE, ONT.

SHORTHORNS

Some extra good young bulls for sale. Catalogue.

JOHN CLANON, Manager. on H. CARGILL & SON, CARGILL, ONTARIO.

We are offering 18 BULLS

from 4 to 10 months old, sired by imported Diamond Jubilee—28861—. Also a few females, all ages, of good Scotch breeding.

FITZGERALD BROS., Mount St. Louis, Ont. Elmvale Station, G. T. R.; Hillsdale Telegraph Office.