



THROUGH Tourist Sleepers to Los Angeles leave Union Station, Chicago, 5.15 p. m. every day.

Only \$33 for a ticket, Chicago to Los Angeles, or to any other principal point on the Pacific Coast. Only \$7 for a double berth, Chicago to Los Angeles. Route—

Chicago, Milwaukee & St. Paul Railway,

Union Pacific and the new San Pedro, Los Angeles & Salt Lake Railroad, via Omaha, Salt Lake City (three hours to see the "City of the Saints"), San Bernardino to Los Angeles. Folders free.

Tickets, No. 8 King St., East, TORONTO.



FARM LABORERS

Farmers desiring help for the coming season should apply at once to the **Government Free Farm Labor Bureau.** Write for application form to

Thos. Southworth
Director of Colonization, Toronto.

Dairy Profits



Greatly increased by our **WOODWARD WATER BASINS**

They always give water supply.
They give in correct quantities.
They give it at right temperature.
They prevent contagion through water.

PAY FOR THEMSELVES IN ONE YEAR.

Ont. Wind Engine & Pump Co., Ltd
Toronto, Ont.

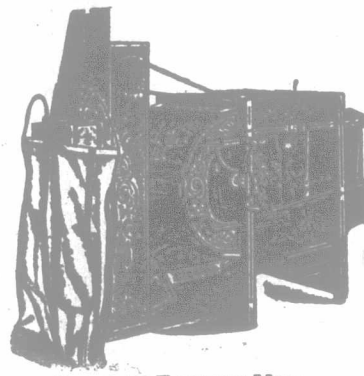
Portland Cement

Farm Tiles, Culvert Pipes, Hard Wall Plaster, Calcined Plaster, Land Plaster, Drain Pipes, Fire Bricks, etc.

ALEX. BREMNER, Importer
50 Bleury Street, Montreal.

\$3 a Day Sure Send us your address and we will show you how to make \$3 a day absolutely sure: we furnish the work and teach you free; you work in the locality where you live. Send us your address and we will explain the business fully; remember we guarantee a clear profit of \$3 for every day's work, absolutely sure, write at once **IMPERIAL SILVERWARE CO., Box 706, WINDSOR, ONT.**

INCREASE YOUR GRAIN CROPS 20%



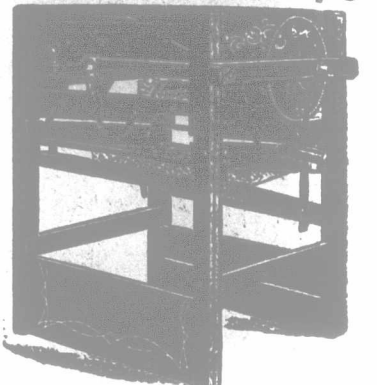
CHATHAM FANNING MILL.
Capacity, 40 to 80 bushels per hour.

The Earth Will Yield It Up If You Sow Good Seed.

The Chatham Fanning Mill is the most perfect invention in existence for cleaning and grading seeds and grain. Its use on hundreds of thousands of farms in Canada and the United States and in all the grain-raising countries in the world proves its absolute merit. Capacity, 40 to 80 bushels per hour, and 16 screens supplied, which adapt it to every natural use. It cleans the grain and sorts it into all kinds and sizes and insures

PURE, PLUMP, HEALTHY SEEDS

absolutely free from weeds, a gain of fully 20% in the crops and a great reduction in labor. Bagging attachment will save labor of one man.



CHATHAM SEPARATOR
For separating Oats from Wheat

PRIZE AWARDS at World's Fair, St. Louis; Pan-American, Buffalo; World's Fair, Paris, France; Toronto, Winnipeg, Halifax, Charleston, Savannah and Jacksonville.

Only One Example

Mr. O. E. Perkins, of Hallsport, N.Y., got \$550 more for 1,000 bushels of wheat than his neighbor did, by cleaning it with his Chatham Mill and selling it for pure seed at \$1.25 per bushel, against 70 cents per bushel which his neighbors received in the market.

Chatham Separator, for separating Oats from Wheat illustrated above is indispensable to those who want to thoroughly separate oats from wheat. It is used for this purpose only, and is operated with practically no effort.

Guaranteed for Five Years

Every Chatham Fanning Mill and Chatham Separator is guaranteed to give satisfaction for five years, and our easy payment system will enable either one to earn its cost many times over before the bill is fully paid.

We also sell the Chatham Incubator on very easy terms. Write now before you forget it; a post card will do.

THE MANSON CAMPBELL CO., LIMITED, Dept. 201 CHATHAM, CANADA

Alberta Customers supplied from Calgary, Alta. John I. Campbell, Agent. Manitoba, Assiniboia, Saskatchewan supplied from Brandon, Wm. Alwell, Agent. British Columbia supplied by Thos. Elliott, New Westminster. Nova Scotia and New Brunswick supplied by G. S. McPherson, Halifax.

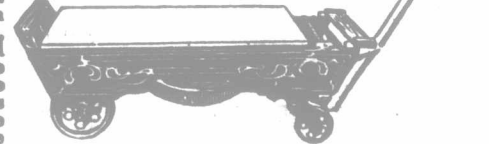
Chatham Farm Scale

is a necessity to every farmer who wishes to know how much he buys and sells. It is standard weight, guaranteed by the Canadian Government, and is made in 3 styles, capacity, 2000 lbs.—2-wheel truck scale, 4-wheel wagon scale and 4-wheel wagon scale, high beam.

Simplest and handiest scale made; drop a lever and it becomes a strong truck, raise a lever and you have an accurately adjusted, perfectly constructed farm scale. When the lever is dropped no weight or wear comes on knife edges of the scale, an advantage which no other farm scale possesses.

Sold also on easy-payment plan

Five Years' Guarantee



CHATHAM FARM SCALE, CAPACITY 2000 LBS.
Also Two Other Styles.

YOUR ROOF

If we could show you the roofs on the Government buildings, railroad buildings, farm and poultry buildings all over the world, covered with

PAROID ROOFING

we would sell you the roofing for the next building you put up or repair, simply because we could prove to you that while it's not the cheapest roofing, it's the most economical in the long run. We cannot show you the buildings, but we can show you photographs, and they are yours on a postal's notice. Before you buy, just write us for free sample and booklet, "Building Economy."

F. W. BIRD & SON, Makers,
(Originators of the complete roofing kit. Fixtures in every roll.)

Established in U. S. 1817. **Hamilton, Ontario, Canada.**

THE FARMERS' MFG. AND SUPPLY CO., Limited.

Capitalization, \$100,000. Shares, \$20.

Farmers, consider your own interest and become a shareholder in this practical co-operative company.

We handle implements of all kinds, stoves, harness, twine, cutters, robes, blankets, furniture, windmills, pumps, wire fences, etc., but do not handle groceries, dry goods, books and shoes, or any perishable goods.

We have our own factory where we manufacture the Oxford Cream Separator, and we intend to manufacture other lines of implements also, and from this source a good profit will be made for our shareholders.

We have already a store in Durham and Galt, and are opening in Millbank and Paris in a few weeks, also other places. This is for the benefit of shareholders who can see what they are buying. The shares are \$20 each, and no shareholder can secure more than five, consequently no one can get control of stock.

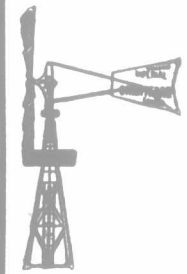
You should become a shareholder once and save from 15 to 25% in buying your goods.

Write for further information to:

HEAD OFFICE and FACTORY Durham, Ont.

Advertise in the Farmer's Advocate.

WINDMILLS



Grain Grinders, Gas & Gasoline Engines, Tanks, Bee Supplies, Etc.

WRITE FOR CATALOGUES.

Goold, Shapley & Muir Co., Ltd.
BRANTFORD, CANADA.

Standard Scales

For railroad, hay, live stock, dairy, coal and platform. For prices and particulars write or call on

GEO. M. FOX,
York St., London, Ont.

Ask your nearest hardware man or dealer for them.



JOHN KENWARD, Expert Auctioneer on Thoroughbred Live Stock

Sales of registered stock scientifically conducted anywhere in Canada.

I am expert judge and auctioneer of all classes of live stock. Parties thinking of holding sales will save money and make money by employing the undersigned.

JOHN KENWARD, Auctioneer, Woodstock, Ont.

I WILL SELL BELVOIR

300 ACRES, one of the very best farms in Ontario. 100 acres arable, average yield of wheat for 20 years, 30 bushels—200 pasture and bush; 100 acres on the noted Delaware Flats, irrigated spring and occasionally fall, nearly surrounded by River Thames. Good fishing and shooting. The house is large and very substantially built. For further particulars address

RICHARD GIBSON, Delaware, Ont.