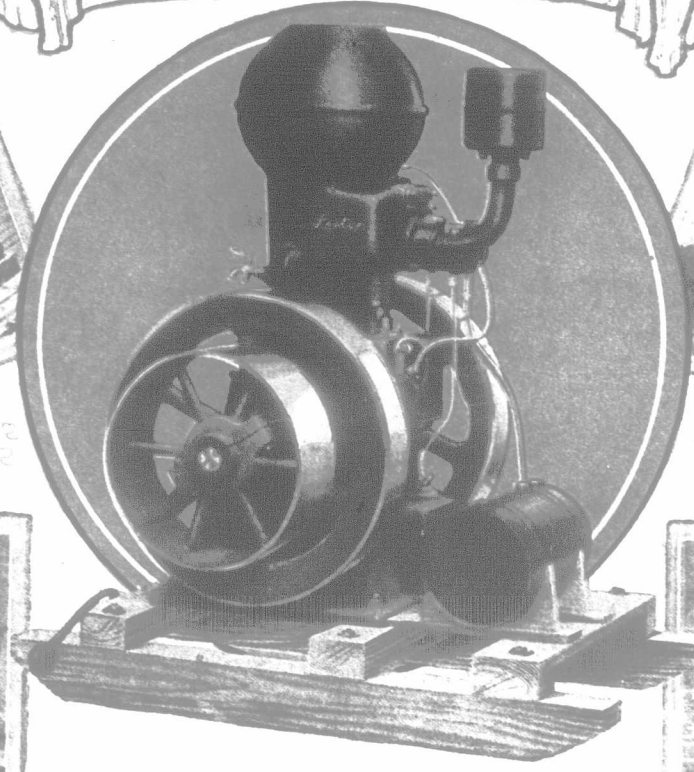


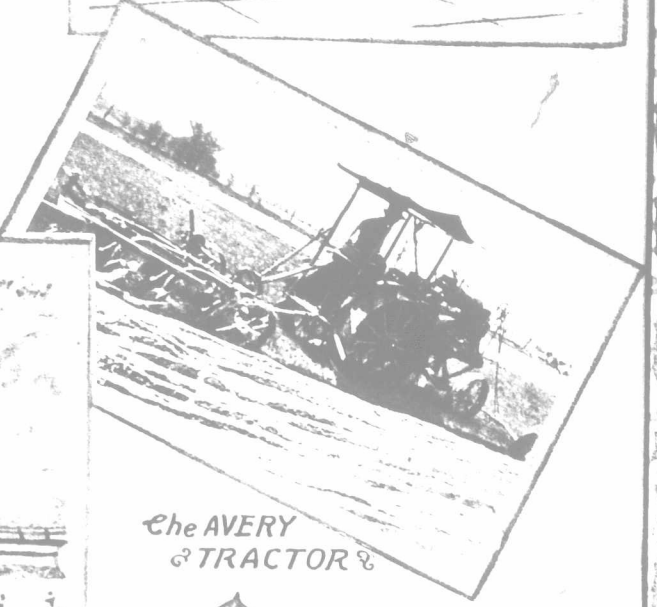
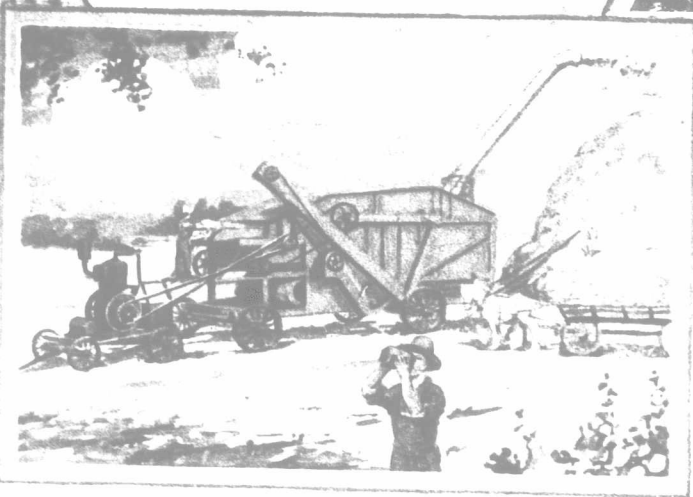
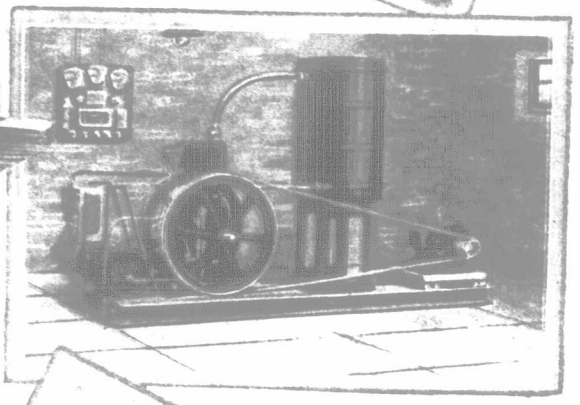
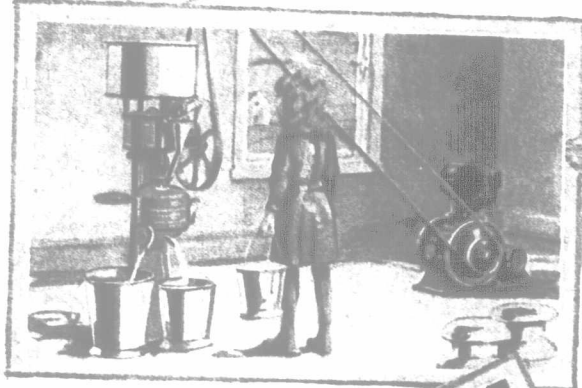
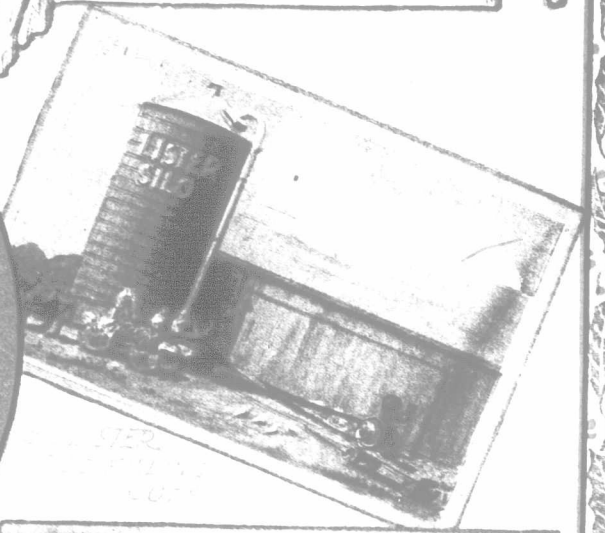
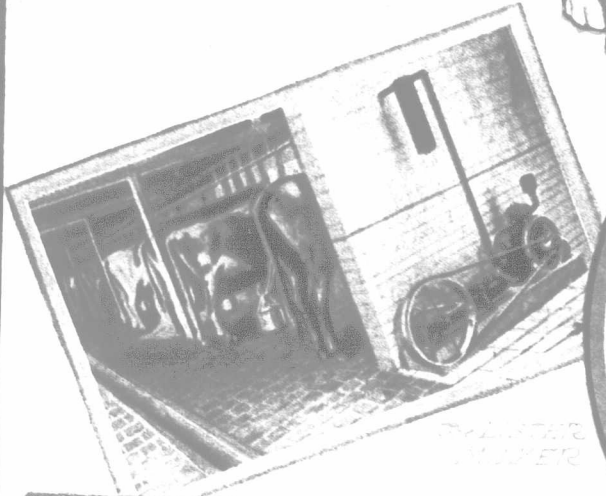


POWER ON THE FARM BRINGS PROSPERITY TO THE FARMER



**A BRITISH-BUILT ENGINE**  
that has made good all over the world

The high grade of materials and workmanship employed in the manufacture of the Lister Engine, its superior construction, equipment and finish, combined with its great simplicity, render it **THE MOST ECONOMICAL AND RELIABLE POWER AVAILABLE FOR THE USE OF THE CANADIAN FARMER.**



The AVERY & TRACTOR

The Lister Works are among the largest and best equipped in the British Empire. Lister Farm Machinery maintains that reputation for superior construction and finish, and is associated with the highest quality of materials. Works are situated at Dursley, England.

The Lister Firm was established nearly a century ago. For twenty years Lister goods have been sold in Canada. A hundred thousand Canadian farmers are our customers. These facts speak for themselves. Catalogues and photographs of Lister power outfits in use on Canadian farms sent free.

**R.A. LISTER & CO LIMITED**  
TORONTO-WINNIPEG-QUEBEC-ST JOHN, N.B.  
WORKS - DURSLEY, ENGLAND.