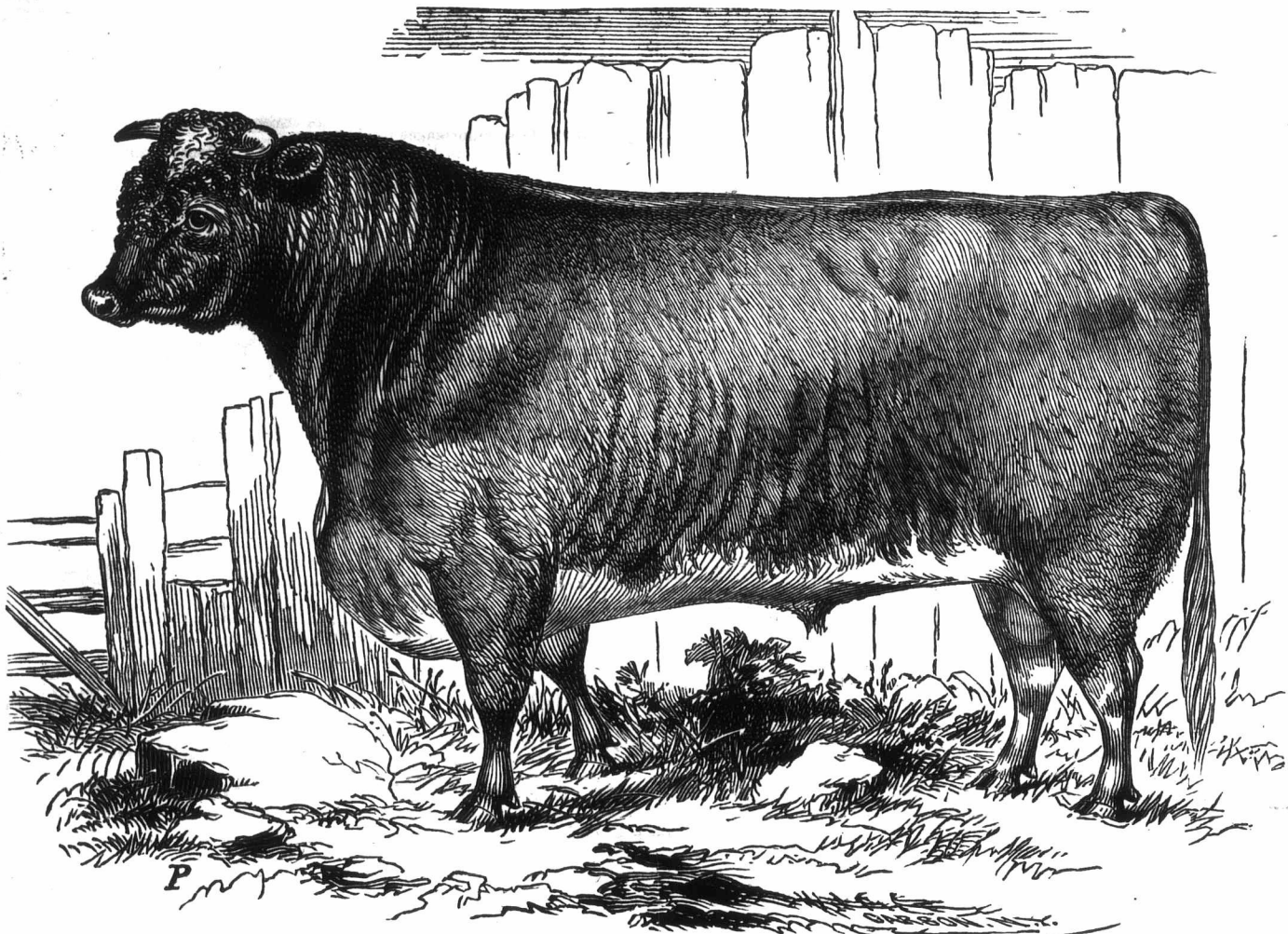


EXECUTOR'S SALE
OF
SHORT - HORN CATTLE, COTSWOLD SHEEP AND BERKSHIRE SWINE,
On Wednesday, April 8th, 1874,

THE ENTIRE WILLOW LODGE HERD OF SHORT-HORNS BELONGING TO THE ESTATE OF THE LATE JOHN SNELL

OVER SIXTY HEAD, CONSISTING OF FIFTY COWS AND HEIFERS, AND TEN BULLS, INCLUDING THE FAMOUS IMPORTED BULL "BRITISH BARON," two other Premium Bulls and all our fine Show Cows and Heifers, together with a large number of useful Cows and Heifers, about thirty of which will be in calf to



BRITISH BARON.

About the same time will be sold one-half the fine flock of COTSWOLDS—over eighty head—consisting of Rams, Shearling Ewes, Ewes with Lambs or with Lambs by their sides, including all the Yearling Ewes in the flock—an extra good lot—the famous Imported Ram "King of Troy," and the Pen of Ewes which won the First Prize at the Royal Show in England, 1873.

Also, the entire Herd of BERKSHIRES, including the fine Imported Boar "Sir Heber Humphrey," and several fine Imported Sows.

TERMS.—All sums under \$100, Cash; over that amount 7 months' credit on approved endorsed notes, bearing interest at the rate of six per cent. A discount at the rate of 8 per cent. per annum allowed for cash on all sums over \$100.

Sale to commence at 12 o'clock, sharp. Lunch at 11. Willow Lodge is 4 miles from Brampton Station, G. T. R.; 4 trains each way stop daily. Free conveyances from the Station to the Farm will be provided.

Catalogues sent on application to

JOHN SNELL & SONS,
EDMONTON, ONT.

EXTENSIVE AUCTION SALE
OF
Short - Horn Cattle and Imported Clydesdale Stallions.

I will offer my entire Herd of Short-horns, numbering about Twenty-five Head, and two Imported Clydesdale Stallions by Public Auction
ON THE NINTH OF APRIL, 1874.

MOST OF THE CATTLE ARE IMPORTED, AND THE REMAINDER ARE BRED DIRECT FROM IMPORTED STOCK. Many of them are Prize Animals, and include the noted lines of the Golden Drops, Mimics, Ramsdens, Sanspareilles, and other noted tribes. Most of the cows have heifer calves at foot-calves to go with dam. Most of the cows and heifers have been bred to imported "Scotsman 2nd," bred by the Duke of Buccleugh, Scotland. I will also sell one span of CLYDESDALE MARES.

The farm is situated 6 miles from St. Mary's, a Station on the Grand Trunk Railway. Teams will meet intending purchasers on the arrival of trains the evening previous and the morning of the sale.

TERMS OF SALE.—Six months on furnishing approved joint notes; 7 per cent. off for cash.

Catalogues sent on application to

HUGH THOMSON,
BOX 134, ST. MARY'S ONT.

NOTE.—The Sale of John Snell & Sons will take place on April 8th, the day previous, so any person attending one can attend both without any inconvenience.

CONTENTS OF MARCH NUMBER.

EDITORIAL:—

Prize Essay, 33; The Rennie Pea, 33; Spring Wheat, 33; Dairymen's Association, 33; Ploughing Under Green Crops, 33; Mushroom Growing, 33; First Prize Seed Sower, 33; Apple Trees Dying, 34; Lucerne, 34; Steaming Food, 34; Naturalized Weeds—Distribution of Seeds, 34; The Grangers, 34; Crop Reports of 1874, 35; Review of the British Corn Trade, 35; How they Farm in other Countries, 35.

AGRICULTURAL:—

Potash as a Fertilizer, 35; Model Farming, 35; Cost of Transportation Affects both Producer and Consumer, 35; The Dry Earth System, 35; The Potato Disease, 36; Cultivation of Beets in America, 36; Salt, 36; The Decline of Grain Farming in the East, 36; New Agricultural Machine, 36.

THE HORSE:—

Sand Crack or Fissure in the Hoof, 36; 7; Charcoal for Sick Horses, 37; Scratches, 37; The Use of Absorbents in Stables, 37; Amateur Horse Breeding, 37; Management of a Refractory Horse, 37; Care of Horses, 37; Cure for Scratches, 37; The Foot of a Horse, 37.

Effects of Vegetable Perfume on Health, 37.

STOCK & DAIRY:—

Making Good Pork, 38; Cows and Clover, 38; The Advantage of the Dairy Business to the Farm, 38; The Prices of Dairy Stock in New York, 38; Western N. Y. Butter Markets, 38; Last Year's Cheese Trade, 38; Directions for Packing Roll Butter, 38; An Experiment, 38; 39; Losses by Live Stock Preventable, 39; Inoculation for the Prevention of Pleuro-Pneumonia, 39; Stock Sale, 39; Food, and the Mode of Administering it, 39; Weight of Cattle of Several Breeds, 39; Ram "Palmer" (illustrated), 40; The Spring Care of Cows, 40.

GARDEN, ORCHARD & FOREST:—

Timber and Health, 40; Apple-Tree Planting in Minnesota, 41; Rhubarb, 41. Government Agriculture, 41; Pepper's Ghost (illustrated), 41; Free Trade, 41.

CORRESPONDENCE:—

Treadwell Wheat, 42; Grubs in Sheep's Heads, 42; Seed Report, 42; Watering Cart Wanted, 42; Feed for Sheep, 42; Shall we Show Ewes or Wethers? 42; Road Fences, 42; Statute Labor, 42; Lumbermen and Farmers, 42; The Prince of Wales' Prize, 42; Scott's Wheat, &c., 43.

MISCELLANEOUS AND GOOD HEALTH, 43.

MINNIE MAY'S DEPARTMENT, 44.

UNCLE TOM'S COLUMN, 45.

APIARY and Advertisements, 46.

Advertisements, 47, 48.

HEATH & FINNEMORE,

WHOLESALE AND RETAIL

SEED MERCHANTS.

SOLE AGENTS FOR McMASTER AND HODGSON'S CELEBRATED LIQUID ANNATTO.

RENNETS, SCALE BOARDS, CHEESE BANDAGES and all other Cheese Factory requisites constantly on hand.

KING ST. - MARKET SQUARE.
Mar, Apr & May

GRATIS, AND POST FREE

McBROOM'S
ILLUSTRATED SEED CATALOGUE
AND
Amateurs' Guide for 1874.

Sent to all who apply.

I mail seeds to all parts of the Dominion at Catalogue prices, and PREPAY THE POSTAGE. This enables all to obtain fresh seeds from a RELIABLE Seed Establishment as cheaply as if bought personally in my store. Parties sending me their orders will receive the parcel in a few days at their Post Office without further cost.

Send your address on a postal card for a copy at once.

GEO. McBROOM,
Seed Merchant and Importer, London, Ont.
3-1t

T

Reports of the

MEETING OF THE

Ma

In the Cowman's Club their subsequent treatment of the result of the discussion the use of muck when mixed with liquid. Later in matters of interest Drainage was the next meeting of the club were the meetings are. Although very few have been performed present seemed effects in other value, generally draining was the cre chosen as the

Now if there ing more th —S is thorough —is the a farm manure having used for year, large quantities other manures, say what he has experience. The manure sufficient tent of land—20 require some ex but labor and object were well

The value of varies very much of it would cost from either of the valuable as manure. It is more or less deposit, and is It is dark and the marley mud heap.

In the Autumn designed for there let it be atmosphere. improve it, and lose much of from its fertility sorb those elements so rich. is by this exposure goes an almost Having thus heap add to your barn yard and it will most valuable roots. For the By this admixture, and carbon is absolutely manure will proportion to Year after the advantage this manner—field to which One muck heap yard covered measured in 10 feet. The