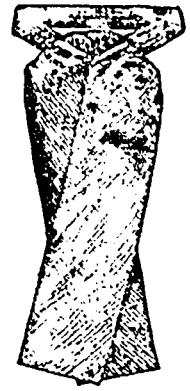




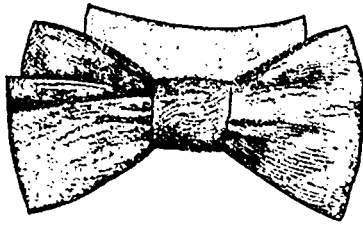
Men's Fine Silk and Satin Neckwear, in made-up knot shape, richest colorings and patterns, light and dark shades, satin lined **25c.**



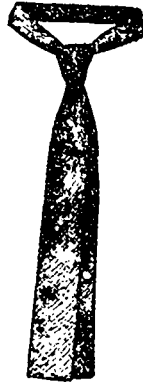
FINE Neckwear



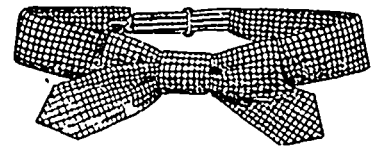
Fine Silk and Satin Puff Scarfs, latest shape, newest colorings and patterns, light and dark shades, also black silk and satin **25c.**



Ladies' Stock Bows in all the newest shades, including plain colors, spots and black, best silk lined, for wearing with high turned-down collar **25c.**



Fine Silk and Satin Ties, in narrow graduated Lombard shape, for tying small four-in-hand or bow, latest patterns, silk both sides (cut showing tied in small four-in-hand) **25c.**



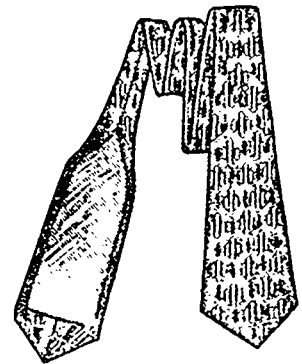
Fine Silk and Satin Bow Ties in the newest shapes, pointed or square ends, satin lined, latest colors and patterns, light and dark.... **25c.**



Fine Silk and Satin Four-in-hand Ties in the choicest patterns and colorings in broches and mat designs, satin linings, light and dark colors **25c.**



Men's Dress Shirt Bosom Protectors, in fine quality black silk and satin, quilted silk linings, collar protector attached, as cut **\$1.00, \$1.50, \$1.75**



Fine Silk and Satin Ties in graduated Dorby shape, may tie from either end, latest broche effects, also spots and neat patterns, satin lined **25c.**

Mail Orders
Filled Promptly.

THE **T. EATON CO.**
LIMITED.

Satisfaction Guaranteed
or Money Refunded.

190 YONGE STREET, - - TORONTO, ONT.