

Issued Each Week—Only One Dollar a Year

VOL. XXX.

NUMBER 20

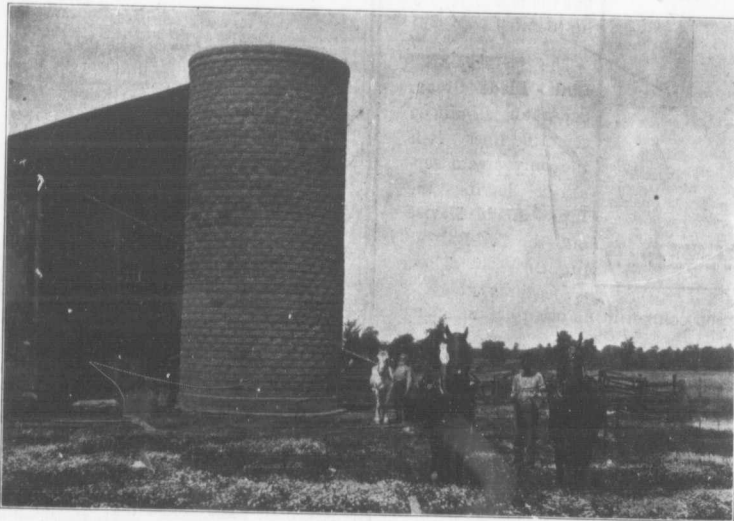
FARM AND DAIRY

RURAL HOME

PETERBORO, ONT.

MAY 18,

1911.



SUCCESSFUL DAIRYMEN CLAIM THE SILO TO BE AN ABSOLUTE NECESSITY

Corn fed as ensilage will produce 15 per cent. more milk than will the same amount fed as dry fodder. Corn as ensilage can be stored in much smaller space, can be fed with much less labor, and is equally good for winter feeding or for summer soiling. The silo has been a mortgage-lifter on many farms. No one who has given the silo a fair trial would go back to the old method of feeding corn. Determine to have a silo. Put your corn in now to fill it next fall. The concrete block silo here shown is on the farm of Mr. D. Brownlee, Lambton Co., Ont.

DEVOTED TO
BETTER FARMING AND
CANADIAN COUNTRY LIFE