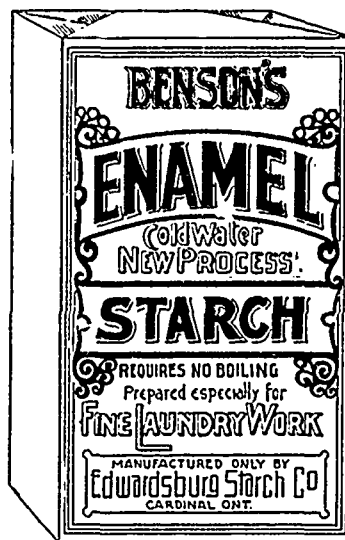


Benson's Enamel Starch

MADE AND GUARANTEED
BY THE
EDWARDSBURG STARCH CO
LIMITED

A Cold
Water
Starch



SEE OUR
PRICE LIST

THE EDWARDSBURG STARCH CO.
LIMITED

E. NICHOLSON, WHOLESALE AGENT
115 BANNATYNE STREET EAST, WINNIPEG

53 FRONT ST. E.
TORONTO

ESTABLISHED
1858

WORKS:
Cardinal, Ont.

164 ST. JAMES ST
MONTREAL

Myron McBride & Co.

IN LIQUIDATION

**BLACK
CASHMERE
HALF
HOSE**

About 300
dozen of as
fine Sox as
as were ever
brought into
the country.

If you take
10 dozen you can get them
away down.

One line Cashmere $\frac{1}{2}$ Hose
at \$1.75; another line Cash-
mere $\frac{1}{2}$ Hose at \$2.00.

A line embroidered in
pretty designs of colored silks
for \$2.65.

Something better — top
ribbed, \$3.00.

A full ribbed leg, plain feet,
special price \$3.50.

All unchangeable Herrer-
dorf dye, without seams.

**WHITE
KID
GLOVES**

"Verona," a
2 dome clasp.
regular \$6.00,
now \$5.00.

"Greco," still
better, very soft, perfectly
bleached leather, formerly
\$7.50, quoted \$6.50.

**MOCCA-
SINS**

Two qualities
left at \$7.50
and \$12.00.

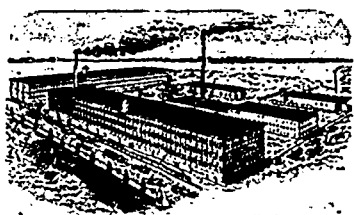
They were
\$9.00 and \$14.00.

Send in a letter order while
the chance to buy cheap goods
is open.

**MYRON
McBRIDE
& CO.**

Princess St., Winnipeg

McLAUGHLIN CARRIAGE CO. OSHAWA, ONTARIO



THIS cut shows our immense, new and thoroughly
equipped factory, which gives us a capacity of
building (not simply assembling) from 14,000
to 16,000 finished jobs annually.

Our vehicles were awarded the Silver Medal
(the highest honors attainable for light work), at the Paris
International Exposition, excelling all other Canadian Ex-
hibitors in the business and proving conclusively that for
real merit our goods are unequalled.

A point not to be overlooked is the following: We
are absolutely the only firm represented in the West, which deals direct. We have no Middle-
man's profit. We take your order and ship direct, no commission (10 per cent to 12½ per cent)
being allowed simply because our vehicles come into your country.

Then again, our wheels are All "A" Standard. A "B" wheel cannot be found in our
factory. An "A" wheel is made out of the cream of the hickory. A "B" wheel is made out of
hickory not fit for an "A" wheel. Always buy the best and good results are bound to follow.

Before placing spring orders it will pay you to wait until our traveller calls on you.

When in the city, do not fail to call at our warehouses, No. 144 Princess St. We will at all
times be pleased to meet you. Our Motto for 30 years: "ONE GRADE ONLY AND THAT THE BEST."

McLaughlin Carriage Co. Branch: 144 Princess St., Winnipeg