

can reach, and of which they may well be proud, but the large number of draws in the late match, and the small number of games scored by the one player, as compared with the victories of his antagonist, prevented that exciting interest in the final results which is always manifested when the competitors are neck and neck through-out a long and stubbornly contested race.

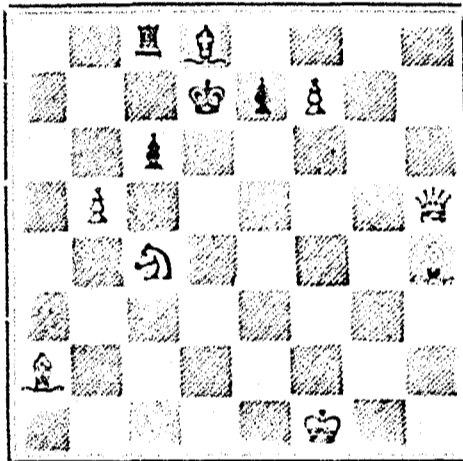
For improvement in play, nothing is equal to the study of the best games of the best players, and although in the late contest many of the games were drawn, we can assure our young friends that when two players of the force of Rosenthal and Zukertort can so carry on a game as to neutralize each other's best efforts over the board, there is not much in it which will amply repay the student for his time and trouble should he play over with great care every move from the beginning to the end.

CHESS IN ITALY.

It is contemplated to hold a National Tourney on the occasion of the National Exhibition, which is to take place at Milan in 1881. A provisional committee to carry out this object has already been formed.

Twenty-two competitors have entered the Meester Tourney at Wiesbaden, including Messrs. Blackburne, Mason, Schwartz, English, Dauter, Blackburne, &c.

PROBLEM No. 286. BLACK.



WHITE.

White to play and mate in two moves.

GAME (7TH). Evans Gambit.

- White—(Kingside) 1. P to K4, 2. K Kt to B3, 3. B to B4, 4. P to QKt4, 5. Castles, 6. P to Q B3, 7. P to Q4, 8. P takes P, 9. P to Q5, 10. B to Q3, 11. B to B4, 12. Q takes Kt, 13. P to Q6, 14. Q to Kt B3, 15. Kt to Q5, 16. B to Kt2, 17. Q to K3, 18. Kt to Q4, 19. R to Q B6 (ch), 20. Kt takes B (ch), 21. Q to K R6, 22. B takes P, 23. P to K B4 (ch), 24. R to B4 and wins (ch).

NOTES.

- (a) An excellent move. (b) The end of some beautiful play.

SOLUTIONS.

Solutions of Problem No. 286

White. Black.

- 1. B to K R3, 2. Q to Kt4, 3. Q mates. 1. K to K B3 or 5, 2. K to K4.

There are other defences.

Solution of Problem for Young Players No. 284.

WHITE. BLACK.

- 1. K to K B2, 2. K to K3 mate. 1. K takes B.

PROBLEMS FOR YOUNG PLAYERS, No. 285.

White. Black.

- K at K Kt2, B at K Kt6, B at K B6, Kt at K6, Pawn at K B3. K at K R3, B at Q7, Kt at K R4, Pawn at K R3, and K Kt4.

White to play and mate in three moves.



CANADIAN PACIFIC RAILWAY.

Tenders for Rolling Stock.

THE time for receiving tenders for the supply of Rolling Stock for the Canadian Pacific Railway, to be delivered during the next four years, is further extended to 1st October next.

By Order, F. BRAUN, Secretary.

Department of Railways and Canals, Ottawa, 26th July, 1880.

GRAND DOMINION EXHIBITION!

TO BE HELD ON THE Provincial Exhibition Grounds Mount Royal Avenue, MONTREAL.

OPENS TUESDAY, SEPT 14TH, Closes FRIDAY, SEPT. 24TH, at 2 P.M.

\$20,000 OFFERED IN PREMIUMS.

Entries must be made with the Secretaries in Montreal on or before the undermentioned dates, viz: HORSES, CATTLE, SHEEP, SWINE, POULTRY, AGRICULTURAL IMPLEMENTS, and DAIRY PRODUCTS, &c.

Saturday, September 4th.

FINE ARTS, MANUFACTURES, IMPLEMENTS, MACHINERY, STOVES, &c.

Saturday, August 28th.

Prize Lists and Blank Forms of Entry can be obtained of the Secretaries.

For further particulars apply to

S. C. STEVENSON, Secretary Council of Arts and Manufactures. GEO. LECLERE, Secretary Council of Agriculture.

1000000 Cards, no two alike, 10c. with name post-paid, samples free. J. B. Husted, Nassau, N.Y.

THE BELL ORGAN COMPANY.

LARGEST AND OLDEST ORGAN FACTORY IN THE BRITISH EMPIRE.

Established 1865.—13,000 now in use.

Silver Medal and Diploma, Provincial, 1871.

Silver Medal and Diploma, Centennial, 1876.

International Medal and Diploma, Sydney, Australia, 1877.

Only Silver Medal for Parlor Organs, Provincial, Toronto, 1878.

Only Medal at Industrial Exhibition, Toronto, 1879.

Mr. Hague, of the Merchants Bank, says: "The Organ sent me I did not suppose capable of being produced in Canada, the tone is pure, rich and deep, and the effect produced by combination of the stops is charming." For Catalogues, address:

W. BELL & CO.,

41-47 East Market Square, Guelph, Ont.

Or J. HECKER, 10 Phillips Square, Montreal.

THE COOK'S FRIEND

BAKING POWDER

Has become a HOUSEHOLD WORD in the land, and is a HOUSEHOLD NECESSITY

in every family where Economy and Health are studied. It is used for raising all kinds of Bread, Rolls, Pastry, Cakes, Griddle Cakes, &c., &c., and a small quantity used in Pie Crust, Puddings, or other Pastry, will save half the usual shortening, and make the food more digestible.

THE COOK'S FRIEND

SAVES TIME. IT SAVES TEMPER. IT SAVES MONEY.

For sale by storekeepers throughout the Dominion, and wholesale by the manufacturer.

W. D. McLAREN, UNION MILLS, 17 19-52-7062, 55 College Street.

25 all Gold and Silver, Motto and Floral Cards 10c Stevens Card Co., Northford, Ct.

SEND 10c. to the Queen City Card House, Toronto, Ont., for 25 Pretty Bird and Floral Cards, 25 new Transparent, 25 White Bristol, or 5 neat assorted Cards, with name. 12 Turn down cards, gilt beveled edge, very handsome, 20c. Outfit 10c.

LIEBIG COMPANY'S

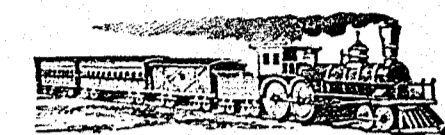


EXTRACT OF MEAT

FINEST AND CHEAPEST MEAT-FLAVOURING STOCK FOR SOUPS, MADE DISHES & SAUCES.

"Is a success and boon for which Nations should feel grateful."—See Medical Press, Lancet, Brit. Med. Jour., &c. "Consumption in England increased tenfold in ten years." To be had of all Storekeepers, Grocers and Chemists. Sole Agents for Canada and the United States (wholesale only) C. David & Co., 43, Mark Lane, London, England.

CAUTION.—Genuine ONLY with fac-simile of Baron Liebig's Signature in Blue Ink across Label.



Q. M. O. AND O. RAILWAY.

Change of Time.

COMMENCING ON

Wednesday, June 23, 1880.

Trains will run as follows:

Table with columns: MIXED, MAIL, EXPRESS. Rows include: Leave Hochelaga for Hull, Arrive at Hull, Leave Hull for Hochelaga, Arrive at Hochelaga, Leave Hochelaga for Quebec, Arrive at Quebec, Leave Quebec for Hochelaga, Arrive at Hochelaga, Leave Hochelaga for St. Jerome, Arrive at St. Jerome, Leave St. Jerome for Hochelaga, Arrive at Hochelaga.

(Local trains between Hull and Aylmer.) Trains leave Main End Station Seven Minutes Later.

Magnificent Palace Cars on all Passenger Trains, and Elegant Sleeping Cars on Night Trains.

Trains to and from Ottawa connect with Trains to and from Quebec.

Sunday Trains leave Montreal and Quebec at 4 p.m. All Trains Run by Montreal Time.

GENERAL OFFICE, 13 Place d'Armes Square. TICKET OFFICES, 13 Place d'Armes, and 202 St. James Street, Montreal.

Opposite ST. LOUIS HOTEL, Quebec. L. A. SENECAU, Gen'l Supt.

FORTY TELESCOPES, ranges from five miles to twenty; outside cases only destroyed by fire. Three dozen opera glasses, very valuable mountings; outside cases only destroyed. Will be sold at one-third of the price; great bargains. Twenty marine, field, marine day and night glasses, also for sale cheap. They are all guaranteed to be equal to the best and newest. In most of them outside cases are damaged or destroyed. Address early. HEARN & HARRISON, Opticians, Montreal.

THIS PAPER MAY BE FOUND ON FILE AT GEO. P. ROWELL & CO'S Newspaper Advertising Bureau 110 SPRUCE STREET, where ADVERTISING CONTRACTS may be made for it in NEW YORK.

British American

BANK NOTE COMPANY.

MONTREAL.

Incorporated by Letters Patent.

Capital \$100,000.

General Engravers & Printers

Bank Notes, Bonds, Postage, Bill & Law Stamps, Revenue Stamps, Bills of Exchange, DRAFTS, DEPOSIT RECEIPTS, Promissory Notes, &c., &c., Executed in the Best Style of Steel Plate Engraving.

Portraits a Speciality.

G. B. BURLAND, President & Manager.

The Scientific Canadian

MECHANICS' MAGAZINE

AND PATENT OFFICE RECORD

A MONTHLY JOURNAL

Devoted to the advancement and diffusion of Practical Science, and the Education of Mechanics.

THE ONLY SCIENTIFIC AND MECHANICAL PAPER PUBLISHED IN THE DOMINION.

PUBLISHED BY

THE BURLAND LITHOGRAPHIC CO.

OFFICES OF PUBLICATION, 5 and 7 Bleury Street, Montreal.

G. B. BURLAND, General Manager.

F. N. BOXER, ARCHITECT & CIVIL ENGINEER, Editor

TERMS:

One copy, one year, including postage, \$2.00 One copy, six months, including postage, \$1.10 Subscriptions to be paid in ADVANCE.

The following are our advertising rates:—For one monthly insertion, 10 cts. per line; for three months, 9 cts. per line; for six months, 8 cts. per line; for one year, 7 cts. per line; one page of illustration, including one column description, \$30; half-page of illustration, including half column description, \$20; quarter-page of illustration, including quarter column description, \$10. 10 per cent. off on cash payments.

INVENTIONS AND MACHINERY, &c., or other matter of an original, useful, and instructive character, and suitable for subject matter in the columns of the MAGAZINE, and not as an advertisement, will be illustrated at very reduced rates.

REMITTING MONEY.—All remittances of money should be in the form of postal-orders. When these are not available, send money by registered letters, checks or drafts, payable to our order. We can only undertake to become responsible for money when sent in either of the above ways.

This Journal is the only Scientific and Mechanical Monthly published in Canada, and its value as an advertising medium for all matter connected with our Manufactories, Foundries, and Machine Shops, and particularly to Inventors, is therefore apparent.

Mr. J. H. BATES, Newspaper Advertising Agent, 41 PARK ROW (Times Building), NEW YORK, is authorized to contract for advertisements in the CANADIAN ILLUSTRATED NEWS at our BEST RATES.

THE BURLAND LITHOGRAPHIC COMPANY (LIMITED)

CAPITAL \$200,000,

GENERAL

Engravers, Lithographers, Printers

AND PUBLISHERS,

3, 5, 7, 9 & 11 ELEURY STREET, MONTREAL.

THIS ESTABLISHMENT has a capital equal to all the other Lithographic firms in the country, and is the largest and most complete Establishment of the kind in the Dominion of Canada, possessing all the latest improvements in machinery and appliances, comprising:—

- 12 POWER PRESSES 1. PATENT LABEL GLOSSING MACHINE, 1. STEAM POWER ELECTRIC MACHINE, 4. PHOTOGRAPHING MACHINES, 2. PHOTO-ENGRAVING MACHINES.

Also CUTTING, PERFORATING, NUMBERING, EMBOSSING, COPPER PLATE PRINTING and all other Machinery required in a first class business.

All kinds of ENGRAVING, LITHOGRAPHING, ELECTROTYPING AND TYPE PRINTING executed in the BEST STYLE

AND AT MODERATE PRICES

PHOTO-ENGRAVING and LITHOGRAPHING from pen and ink drawings a SPECIALTY.

The Company are also Proprietors and Publishers of the

CANADIAN ILLUSTRATED NEWS, L'OPINION PUBLIQUE, and SCIENTIFIC CANADIAN.

A large staff of Artists, Engravers, and Skilled Workmen in every Department.

Orders by mail attended to with Fidelity; and prices the same as if given personally.

G. B. BURLAND, MANAGER.