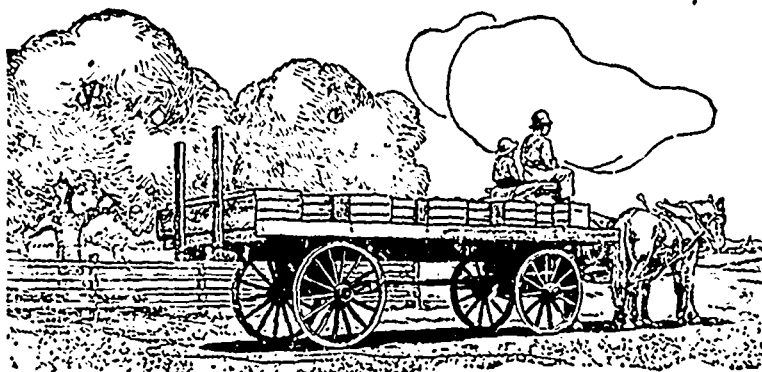


## IHC Wagons Are Tough

**D**ID you ever notice, when one of the wheels of your loaded wagon dropped into a rut or bumped over a stone, how the seat springs gave and rebounded, almost throwing you off? That is an indication of the shock and strain that the rigid spokes and axles have to stand whenever the wagon is traveling over a rough road or through a field. Even on a smooth road there is always the crushing strain of the load, affecting every part from the top box to the lowest point of the tire. I H C wagons



## Petrolia Chatham

take these stresses and strains as a matter of course. They are made to stand just that sort of work. From neckyoke to tail board they are built of selected, air-dried lumber, strong and tough, bending to strains but coming back as straight and true as ever when the load is removed. Besides being tough, I H C wagons are light running. The wheels have just the right pitch and gather, and run true. All skeins and skein boxes are paired. The running gear is assembled by skilled workmen whose wages depend as much on the quality as on the quantity of the work they turn out. Machine work, being more uniform and a great deal faster, takes the place of hand work wherever

possible. Consequently, I H C wagons are practically all of the same high standard of quality throughout.

You cannot do better than to equip your farm with I H C wagons. The I H C local agent sells the wagon best suited to your work and your conditions. See the wagon at his place of business and get catalogues and literature from him, or, address your request to the nearest branch house.

Eastern Canadian Branches

International Harvester Company of Canada, Ltd  
(Incorporated)

At Hamilton, Ont.; London, Ont.; Montreal, P. Q.;  
Ottawa, Ont.; St. John, N. B.; Quebec, P. Q.  
Built at Chatham and Petrolia, Ont.



# Farm Davies' Way

The PROFITABLE Way  
The ONLY Way

Characterized by Better Seed—Better Rotation of Crops—The use of Davies' Mixed Fertilizers—The Triumph of Scientific Methods—Production Doubled—Profits Multiplied.

To increase the profits per acre, you must increase the production per acre—to increase the production per acre, you must increase the fertility of the soil—this can be accomplished by the intelligent use of Davies' Fertilizers in connection with modern farming methods.

Rotation of crops, Drainage, Intense Cultivation, Proper selection of seed, are all important factors in increasing your yields per acre, but absolutely the most important factor of all is the liberal application of "Factory Mixed Fertilizers."

Davies' Fertilizers furnish the essential "plant foods" in varying degrees of availability, and thus your crop is fed throughout its whole growing period. You have also some excess fertility left to "build up" your soil for the next crop.

Do not waste time in this matter—buy "Davies Mixed Brands" in the first place and be among the thousands of satisfied customers who are using them.

Our Booklet, "Farm Davies Way," contains valuable information regarding Fertilizers in general and "Davies" in particular. It is yours for the asking.



Demand Davies "Mixed Brands" from your dealer. There are twenty-five (25) of them, varying in analysis to meet the requirements of your particular soil and crop.

We sell "Potash Salts," "Nitrate of Soda," and all "Raw Materials," only to meet the demand from those who have never used our "Mixed Brands," and who can only be persuaded of the disadvantage of "Home Mixing" by hard-earned experience—we always consider them future customers for our "Factory-Mixed Goods."

Patronize our Agents

# THE WM. DAVIES CO., Limited

Commercial Fertilizer Department

WEST TORONTO, ONT.

R. INNES, B. S. A., Manager