

ESTABLISHED 1889
BELLEVILLE
BOGLE & BUSINESS
JEFFERS, COLLEGE
PROPRIETORS.

Students have a **LARGER EARNING POWER** who acquire the following lines of preparation under our efficient system of training. IT HAS NO SUPERIOR.

1. Bookkeeping.
2. Shorthand.
3. Typewriting.
4. Telegraphing
(Commercial and Railway Work).
5. Civil Service Options.

Students may commence telegraphing on the first of each month, and the other departments at any time.

J. FRITH JEFFERS, M. A., Principal.
Address: **BELLEVILLE, ONT.**

What is Your Work?
If you are dissatisfied with your situation, your salary, your chances of complete success, write to The International Correspondence Schools, Scranton, Pa., and learn how others so situated are getting an education by mail.

Students in the courses of Mechanical or Electrical Engineering, Architecture, or any of the Civil Engineering Courses are soon qualified for salaried drafting room positions. Write for pamphlets.

The International Correspondence Schools, Box 300, Scranton, Pa.

WOODSTOCK

Business College

AND SHORTHAND SCHOOL.

A business education will help you. Students assisted to situations. None but specialist teachers employed. Write for particulars.
H. M. KENNEY, PRINCIPAL, WOODSTOCK.

CENTRAL Business College
STRATFORD, ONTARIO.
The Leading Commercial School of Western Ontario.
Write for catalogue. **W. J. Elliott, Principal.**

CANCER CURED WITHOUT KNIFE OR PLASTER. FULL PARTICULARS FREE.
F. STOTT & JURY, Bowmanville, Ont.

GUERNSEYS.

This is the dairy breed for ordinary farmers. Large, vigorous, and hardy, giving plenty of rich milk. Several fine young bulls for sale at very reasonable prices. A few heifers can be spared.

Address—**SYDNEY FISHER,**
17-y-o **ALVA FARM, KNOWLTON, P. Q.**

GUERNSEYS
Two Choice Bull Calves
AND Five Heifers for Sale.

Tamworth and Berkshire Pigs.
W. H. & C. H. McNish,
LYN, ONT.

INGLESIDE HEREFORDS.
UP-TO-DATE HERD
OF CANADA!

TAMWORTHS
CHOICE PIGS SIX TO SEVEN
WEEKS OLD.

Send for Illustrated Catalogue. Address, —on

H. D. SMITH, COMPTON, QUE.

F. W. STONE ESTATE,
GUELPH, ONTARIO.

The first Hereford herd established in Canada by importations in 1859 of the best prizewinners of England, followed by repeated further importations, including winners of first prize at Royal Agricultural Show. Choice young Hereford Bulls for sale. Also McDougall's Sheep Dip and Cattle Wash, fresh imported, non-poisonous and reliable; thoroughly tested by over forty years' use on farms of above estate. —on

GOSSIP.

In writing to advertisers, mention the "Farmer's Advocate."

W. R. BOWMAN'S SHORTHORN CATTLE, SHROPSHIRE AND SUFFOLK SHEEP, YORKSHIRE SWINE, AND B. P. ROCK FOWLS.

Mr. W. R. Bowman, whose stock farm is near the town of Mount Forest, Ont., is one of those men who possesses the requisite amount of judgment and energy to succeed in what he undertakes. We have always found him alive and progressive in stock matters and up to the demands of the times. In Shorthorn cattle he has been a strong admirer of the high milking strains, and made a selection for his foundation from the Mayflower family, of which his herd is largely composed. A daughter of Clara 40th (imp.), by Eclipse, has also made her home with Mr. Bowman's herd. Some half dozen heifers approaching their second year are now among the number of the even, thick, early-maturing kind. The sire now in service is Monarch of Mapleton, by Monarch of Bowfront, and out of a pure Bates cow, and although not in high flesh, is a strong, evenly-made bull, and proving highly satisfactory.

In Shropshire and Suffolk sheep we found the stock in excellent shape. Of the former about fifteen breeding ewes were on hand, while double that number of the latter are in the breeding pens. The Shropshires were selected from the pens of Phin, Hunter and Campbell, to which was mated a very choice young ram selected from Mr. W. E. Wright's flock at Glanworth, Ontario, resulting in some splendid, strong, well-covered lambs, thirteen of which are rams. A dozen or more shearing rams were held over, which should attract attention early this fall. The Suffolk ewes were imported from the Earl of Elmsmere's estate, at Stetchwood, Eng., and mated to a ram bred by the Iowa Suffolk Sheep Company, Iowa, resulting in fifteen each of ewe and ram lambs. Very little has been known of this breed in Canada, but from their lamb producing and rearing qualities we would suggest that they are worthy of a closer investigation than has heretofore been given them. They are a big, strong sheep, with black heads and legs, less bone than the Hampshire and equal as mothers, being copious milkers. We wish Mr. Bowman success in his new enterprise, and think the sheep are in the right place to find out their relative value with other similar breeds.

In Yorkshire swine we found a splendid stock of matrons on hand. Among them were three very choice sows of Hollywell ancestry, by a Hume sire of Marion & Haskett breeding. Also a couple of litters of April pigs by the Brethour-bred Silver King, out of a Rose dam. We also saw three full sisters by Lord Grey that are good ones, as well as four very promising females tracing to imported Countess and Mistress, which are straight, lengthy, good sows, covered with beautiful, glossy, straight hair, and with plenty of bone. In comparing this stock with our former visits we would state that Mr. Bowman is the strongest in Yorkshires to-day that we have known him. A pen of B. P. Rock fowls receive attention, and much care has been devoted to the selection of suitable stock for mating.

OFFICIAL TESTS OF HOLSTEIN COWS.

Mr. S. Hoxie, Supt. of the Advanced Registry of America, has issued a statement of tests of 34 cows and heifers made from Oct. 1st, 1898, to Jan. 1st, 1899.

These tests are for seven consecutive days, and are supervised by officers of agricultural colleges and State experiment stations or by persons vouched for by such officers. The amounts of butter-fat are determined by the Babcock test, and the amounts of butter are calculated on the basis of 80 per cent. fat to a pound of butter—the rule established at the World's Columbian Exposition.

Amongst the number in this report we find the following, which are the highest in the list: Calamity June 26292; age 7 years, 10 months, 11 days; owned by A. & G. Rice, Currie's, Ont.; amount of milk, 485.8 lb.; amount of butter, 22 lb. 5.2 oz., in a food test; cost of butter per pound, 7.04 cents.

Calamity June 26292; age 7 years, 10 months, 11 days; amount of milk, 572.5 lb.; amount of butter, 25 lb. 0.9 oz.

Inka Hartog's Pietertje Kate 23484; age 8 years, 1 month; amount of milk, 456.8 lb.; amount of butter, 20 lb. 3.2 oz.

Daisy Texal 2nd 44831; age 3 years, 1 month, 21 days; property of A. & G. Rice, Currie's; amount of milk, 444.8 lb.; amount of butter, 18 lb. 2.1 oz., in a food test; cost per pound, 9.32 cents.

Daisy Texal 3rd 44832; age 1 year, 11 months, 28 days; owned by A. & G. Rice; amount of butter, 10 lb. 1 oz.

Lilith Pauline DeKol 43134; age 2 years, 1 month, 18 days; amount of milk, 333.9 lb.; amount of butter, 15 lb. 2.2 oz.

JAS. TOLTON & SONS' SHORTHORNS, OXFORDS, AND BRONZE TURKEYS.

A recent inspection by one of the FARMER'S ADVOCATE staff of the herds and flocks at Mr. Jas. Tolton's splendid farm near Walkerton, in Bruce County, Ont., found the herds and flocks in their usual up-to-date form. Among the 30 odd head of Shorthorns are an exceptionally promising bunch of young females, one two and three years old, and as they are descended from excellent milking dams, their future usefulness is assured. The imported cow, Cleopatra, purchased at Mr. Simmons' dispersion sale, is rearing a splendid bull calf to imported Blue Ribbon, which we would be inclined to suspect Mr. Tolton would reserve to head his herd. He is a straight, deep, good calf, with a wealth of natural flesh not found in every family, and of the early-maturing kind. The present stock bull, Earl of Warwick, by Earl of Moray, and out of Mr. Gaunt's Melody, has not only proven himself a worthy sire, but has made rapid growth. He has a broad, level back, well-sprung ribs, smooth deep body, and long, level quarters, standing well on his legs, is active and useful, and has a mild, quiet disposition; in fact, he is an all-round good bull. Seven red and roan bull calves were in view at the time of our visit.

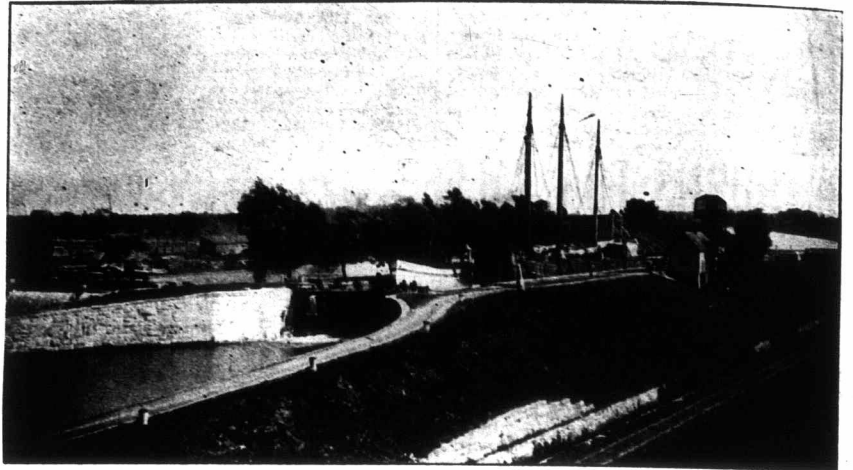
Oxfords. Thirty-two breeding and eleven yearling ewes are on hand this season, and among the young lambs we saw some fine, growthy, promising fellows; the sire employed last season being Bath & West, a sheep bred in Mr. Brassey's noted English flock.

Bronze turkeys receive attention here, and much care has been exercised in the selection of suitable foundation stock.

Work Done
With

THOROLD CEMENT

Speaks for
Itself.



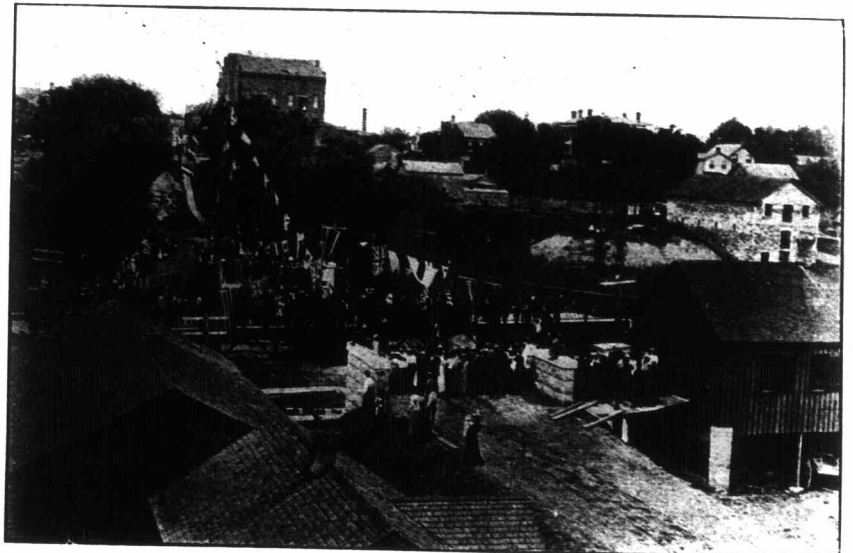
NEW WELLAND CANAL, LOCK 24

with Wastewater and Swing Bridge, and Niagara Central Bridge in the distance.

From **W. G. Thompson, Esq., Engineer in Charge New Welland Canal and Sault Ste. Marie Canal.**

My tests of the Thorold Hydraulic Cement have extended over a period of twenty-eight years, and have been on a large scale, as exemplified in the locks, bridges, culverts, and other masonry on the Welland Canal and Welland Railway, and the record, which has been invariably satisfactory, is to be found in examination of the structures. The necessary tearing down of masonry and concrete during the Welland Canal enlargement has afforded abundant evidence of the reliability of the Thorold Hydraulic Cement, both in masonry and concrete, and above and under water. I desire no better cement for the class of work referred to.

April 17, 1884.



ABERDEEN BRIDGE, OAKVILLE, ONTARIO.

Masonry Work built with Thorold Cement. William Gibson, Esq., M. P., Contractor.

Oakville, January 16th, 1897.

Estate of John Battle, Manufacturers of Thorold Cement, Thorold, Ont.
Dear Sirs,—Thorold Cement was used in the construction of Aberdeen Bridge, at town of Oakville, and it has given perfect satisfaction.

C. J. MARLATT, Reeve,
Chairman of Bridge Committee, 1894.

(From the Toronto Globe, September 19th, 1894.)

OAKVILLE'S ENTERPRISE.

An \$11,000 Steel Swing Bridge Formally Opened Yesterday—A Large and Enthusiastic Audience.

OAKVILLE, SEPT. 18.—(Special)—The erection of a fine new steel swing bridge over the river here justified the enthusiasm displayed by the people of Oakville at its opening to-day. The new bridge is a splendid structure, and is undoubtedly a credit to the Town of Oakville and the Council of the County of Halton, who have aided them in erecting it. The bridge has a clear span of 115 feet between the abutments, and is 118 feet over all. It has a 16-foot roadway and two 4-foot sidewalks. It is a deck swing steel bridge with riveted Warren truss girders. It swings in either direction upon a central pier, 17 feet in diameter at the top and 19 feet at the bottom. The central pier and abutments are of solid masonry laid in Thorold Cement. The laying of the central pier was a difficult feat, owing to the depth of the mud. It rests on 66 piles, sunk to a depth of 40 to 50 feet. The masonry cost \$7,300 and the superstructure \$2,400. The approaches, etc., will bring the total cost up to about \$11,000. The masonry work was done by Mr. William Gibson, M. P., Grimshy, and the superstructure put up by the Central Bridge and Engineering Company, of Peterboro'.

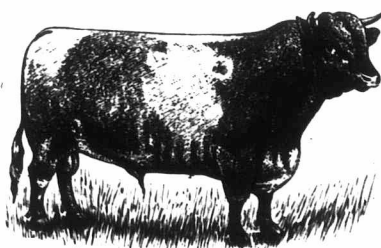
FOR FREE PAMPHLET WITH FULL PARTICULARS, ADDRESS

ESTATE OF JOHN BATTLE,
THOROLD, - ONTARIO.

2 Imported Shorthorn Bulls 2

4

2 - YEAR - OLD
HEIFERS.



ROYAL MEMBER (64741)

4

1 - YEAR - OLD
HEIFERS.

HEIFERS ALL IN CALF TO IMPORTED BULLS.

Correspondence or a personal visit solicited.
Catalogues on application.

H. CARGILL & SON, CARGILL, ONT.

Cargill Station and Post Office on G. T. R., within half a mile of barns.