

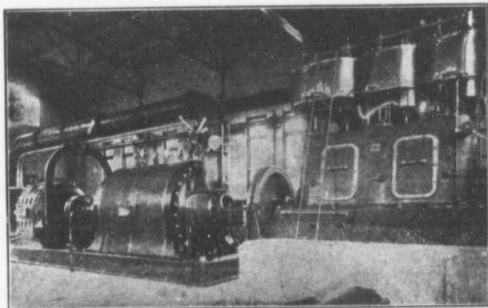
The Canadian Bridge Co., Limited

Manufacturers

WALKERVILLE, ONT.

Locomotive Turn Tables.
Roofs, Steel Buildings and
Structural Iron Work of all Descriptions

RAILWAY AND HIGHWAY BRIDGES



Stage Turbine Pump Electric Motor and High Speed Steam Engine
Built for the Montreal Water and Power Co., to do 4,500 Imperial
gallons a minute against 300 feet head Overall Eff. 70%.

PATENT TURBINE PUMPS

KORTUNG TWO CYCLE GAS ENGINES,
GRAVITY AND PRESSURE FILTERS,
WATER SOFTENING APPARATUS,
ELECTRICAL MACHINES.

- BUILT BY -

MATHER & PLATT, LIMITED

MANCHESTER, ENG.

Drummond, McCall & Co., Montreal

Sold under a **guarantee** other
portlands cannot make in **good
faith**. That guarantee is backed
by the **oldest** and most **respon-
sible manufacturers** in the
world.

AMERICAN

"Judge a Cement by Its Works."



Selected for **PANAMA CANAL** in
Preference at Equal Prices and has
exceeded those severe require-
ments.

GERMAN

190,000 bbls. Key West so far. 70,000 bbls. City of Rochester Reservoir
The best color and most **durable for cement blocks and sidewalks**. Write for list of other important works in all sections

CANADIAN IRON AND FOUNDRY CO. LIMITED

Special Castings

Flange Pipe

Branches

Hydrants



CAST IRON PIPE

Valves

Valve Boxes and

General Water

Works Supplies

SMALL DIAMETER WHEELS AND CASTINGS FOR CONTRACTORS
CAR WHEELS. CASTINGS OF ALL KINDS.

WORKS AT: { HAMILTON, ONT. — MONTREAL, P. Q.
ST. THOMAS, ONT. — THREE RIVERS, P. Q.
FORT WILLIAM, ONT. — LONDONDERRY, N. S.

Head Office: **IMPERIAL BANK CHAMBERS, MONTREAL.**