

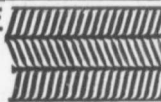
**NEW CONCRETE SEWER.**

A new style reinforced concrete sewer is expected to be on the market in a short time. It is proposed to construct pipe of 24-inch diameter and up by this method, the sections having a length of four feet and being reinforced by hoops of T-iron and longitudinal rods of one and one-quarter inch and three-sixteenths inch twisted steel bars, the latter being so placed in the cement shell that the ends in each section come opposite the lap over those of adjacent ones to which they are fastened by keys driven through slots, thereby making the longitudinals practically continuous.

The joints are so constructed that the lower half, which is not readily accessible from the outside, is filled with cement from the inside, and the upper half is cemented from the outside, thus permitting the making of a perfect joint.

The maker claims that this pipe can be used for water transportation as well as for sewers, and that a water pressure of 40 pounds has been applied to a pipe 36 inches in diameter to demonstrate this fact. The pipe is made on wooden forms so treated as to prevent any concrete sticking to them.

**HERRINGBONE  
LATH**  
MANUFACTURED BY  
THE METAL  
SHINGLE & SIDING CO., LIMITED  
MAKERS OF FIREPROOF BUILDING GOODS  
PRESTON & MONTREAL

**STEEL****HIGHWAY****BRIDGES**

**JENKS & DRESSER**  
SARNIA, ONT.

BUILDERS OF  
**STEEL HIGHWAY BRIDGES**  
**STRUCTURAL STEEL WORK**  
**CONCRETE ABUTMENTS**

**Portland Cement...**

HIGH GRADE GERMAN BRANDS FOR GRANOLITHIC  
AND ARTIFICIAL STONE SIDEWALKS.

**Sewer Pipes, Best English Cements. Best Belgian Cements**  
**Culvert Pipes, &c. W. McNALLY & CO., Montreal**

**Crushed Stone, Limited**  
**STONE**

of any Size and in any Quantity on hand for  
Sidewalks, Roadwork or Concrete Work

Works:  
KIRKFIELD, ONT.

Head Office: 47 Yonge St. Arcade, **TORONTO**  
Phone Main 4316  
G. W. Essery, Manager.

**Blue Lake Cement**

MADE BY

**THE ONTARIO PORTLAND CEMENT CO. LIMITED**  
HEAD OFFICE: BRANTFORD, ONT. LONG DISTANCE PHONE 194

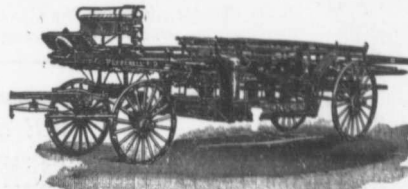
**THE NORTH WESTERN EMPLOYMENT AGENCY**

We supply men of all nationalities on short notice.  
Laborers, Railway Men, Mechanics, Bushmen,  
Teamsters, etc., furnished on demand.

**378 Craig Street West, MONTREAL** TEL. MAIN 468  
We undertake all kinds of Contracts by letter or telegram

**LIGHTNESS, STRENGTH AND ECONOMY**

Seagrave Patent Trussed Ladders, Trussed Aerial, City Service and Village Hook and Ladder Trucks, Combination Hook and Ladder Trucks and Chemical Engines, Trussed Trucks and Hand Pumps, Combination Hose Wagons and Chemical Engines, Hose Wagons, Combination Hook and Ladder Trucks and Hose Wagons, Chemical Engines, Fire Extinguishers, Hose Reels, Patrol Wagons, Ambulances, Specialty Wagons, Patent Sleigh Runners, and other Modern Fire Fighting Tools.



Prompt attention given all inquiries. All goods built to order.

Long Distance  
Phones 586 and 584

**W. E. SEAGRAVE, WALKERVILLE  
ONT.**

**"LAURIE"**  
**Mining Machinery**

Rock and Ore Crushers  
Cyclone Pulverisers  
Plain and Corrugated Rolls

WRITE FOR CATALOGUE

**LAURIE ENGINE & MACHINE CO., Limited**  
MONTREAL

Parmelee & Nicholson, Toronto Agents.

Guilford & Son, Halifax Agents.