

FIG. 1. Spawn of *A. jeffersonianum*. Natural size. The eggs of some of the masses are dead, others are in various stages from blastopore to medullary groove formation.

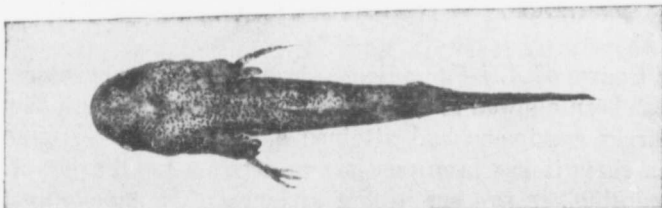


FIG. 2. Larvæ of *A. jeffersonianum*. Enlarged three diameters. Chromatophores considerably but not extremely contracted.

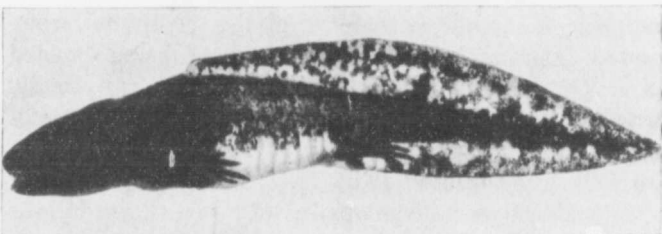


FIG. 3. Larva of *A. jeffersonianum*. Enlarged three diameters. Chromatophores considerably but not extremely expanded. The viscera and right side of the trunk have been dissected away and the photograph taken by both direct and transmitted light.

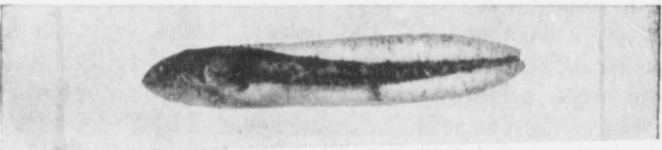


FIG. 4. Larva of *A. jeffersonianum*. Enlarged four diameters.