

Council Reps



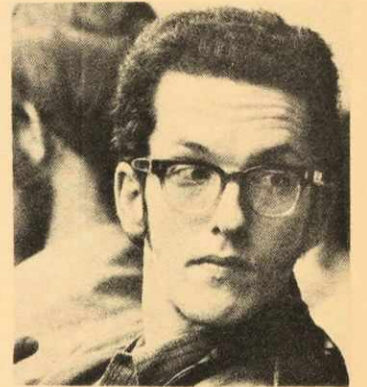
Jack Carroll
Commerce Rep



Les Grieve
Arts Rep
Member of Council
Executive



Elaine Lord
Nursing Rep



Barry Ward
Member-at-Large



Emmi Duffy
Arts Rep



Bob Pottle
Science Rep



Michael Lynk
Member-at-Large



John Stobie
Chairman



Marion Peach
Shirreff Hall Rep



Alex Langille
Science Rep

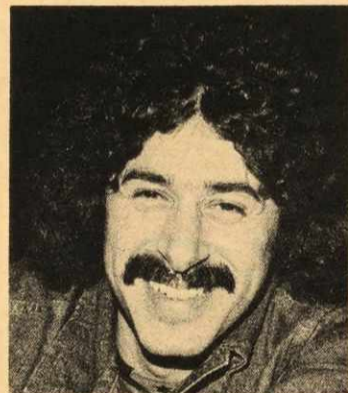
Paula Scott
Health Professions
Rep
picture unavailable



Wilma Broeren
Arts Rep



Gary Manthron
Science Rep



Mike Zed
Commerce Rep



John Armstrong
Howe Hall Rep



Arch Kaiser
Member of Council Executive

Lynanne Sharpe
Pharmacy Rep



Mark Elliot
Engineering Rep



Max Stanfield
Grad. Studies Rep



Mark Addison
Medicine Rep

