

## HIBBERSON BROS. FOREST ENGINEERS and SURVEYORS

Cruising, Mapping, Logging Costs, Flumes,  
Rogging R.Rs.

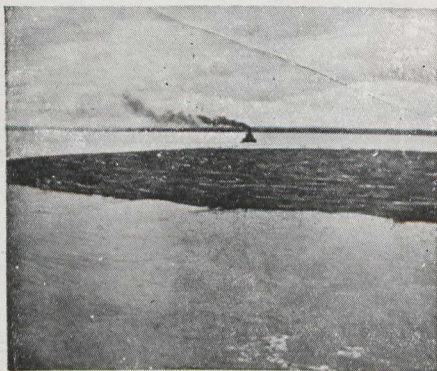
Appraisal on Timber Holdings for Banking  
Interests a specialty.  
Information on B.C. Timber supplied at low  
cost.

Fifteen years experience cruising  
British Columbia Timber.

**Suite 701-5 Belmont House, Victoria, B.C.**

## LUMBERMEN ATTENTION!

Investigate our new patented towing and holding boom. Will save its cost many times over in preventing logs going adrift while being towed in open water, or for booming swift running rivers where logs are held.



Cut shows tug crossing Bay Chaleur with over 2,000,000 in tow. Distance 35 miles.

**A. E. LOOSEN,  
BATHURST, NEW BRUNSWICK**



# QUEEN'S

## UNIVERSITY

KINGSTON,  
ONTARIO

**ARTS**

Part of the Arts course may be covered by  
correspondence.

**MEDICINE**

**EDUCATION**

**APPLIED SCIENCE**

Mining, Chemical, Civil,  
Mechanical and Electrical  
Engineering

**SUMMER SCHOOL**  
July and August.  
26

**NAVIGATION SCHOOL**  
December to April  
GEO. Y. CHOWN, Registrar.

## WHAT IT COSTS TO CLEAN UP A FOREST

(Continued from page 86)

big ends in one direction everything is burned, and allows the burners to proceed with the felling. There are two main difficulties in this way:

1. The opposition of the men doing the work, even though desired by their superiors.

2. The present system of placing the men.

These are more serious problems than would be supposed. Good men are scarce, and they object to the heat and sparks from the fires. Therefore, the poorer workers drift into a job they cannot handle properly. However, this can be overcome by piece-work, with a bonus and proper supervision.

**Cost.** This cost has been obtained from the time reported as work done by the men on the job. However, the costs were kept separately for each strip, therefore we have been able to obtain also a comparative cost on same. For obtaining the number of cords, the logs were measured at the mid-diameter, 4,000 logs on the burned area being measured, and the result used as a converting figure. The Quebec rule was used in obtaining the board measure.

The following has been compiled from the actual time recorded against the operation. A daily time sheet shows for the whole operation: