

THE EVENING TIMES-STAR, ST. JOHN, N. B., MONDAY, MARCH 17, 1924

## HEAVY WEEK END ON N. Y. MARKET

Foreign Buying Orders Continue to Send French Franc Upward.

New York, March 17.—Heavy week-end accumulation of foreign buying orders continued to send the French franc upward to a new high for the movement at 4.41 cents at the opening of the foreign exchange market today, a gain of 16 points from Saturday's closing.

**Montreal Market.**  
Montreal, March 17.—A fair amount of business was transacted during the first half hour's trading on the local market today, although the price trend was easier. Spanish Rivers were the most active wheat. The common came out at a week-end loss of 1/4 to 1/2, while the preferred registered an advance of 1/4 to 1/2. A good demand was made for Anthracite. That stock was up 1/2 to 1/4. Other price changes included:—  
Brazilian off 1/4 to 1/2; Cement off 1/4 to 1/2; Steel off 1/4 to 1/2; and Light Valley off 1/4 to 1/2.

**Noon Report.**  
Influenced by the decision of the House ways and means committee to report \$2,000,000,000 bonus bill and the reduction in the Pan-American Bifurcated Bear traders launched a series of attacks against the general list, the volume of trading during the morning being the largest for weeks. Selling pressure was particularly effective against the oil, motors, rubbers and tobacco. Fisher Body and Stewart Warner each broke five points. Tide-water 4 1/2 and United States Realty, American Tobacco, South Porto Rican Sugar and Houston Oil sold two or more points below Saturday's closing figure. Bulls held firm with few issues such as New Orleans, Texas and Mexico, which advanced 1/4 to 1/2. Erie First Pfd. up 1/4, and Lehigh Valley and Chesapeake and Ohio each up one, showing independent strength. Money continued easy, call funds renewing at four per cent.

New York, March 17.

Stocks to 12 noon.	Open	High	Low
Am Beet Sugar	40 1/2	40 3/4	40 1/2
Allied Chem	48	48 1/2	47 3/4
Am Can	115 1/2	115 3/4	115 1/2
Am Locomotive	73 1/2	74 1/4	73 1/2
Am Smelters	61 1/2	61 3/4	61 1/2
Am Telephone	22 1/2	22 3/4	22 1/2
Anacosta	33 1/2	33 3/4	33 1/2
Balt & Ohio	122 1/2	122 3/4	122 1/2
Bald Locomotive	122 1/2	122 3/4	122 1/2
Beth Steel	55 1/2	55 3/4	55 1/2
Bonch	12 1/2	12 3/4	12 1/2
Chandler	57 1/2	57 3/4	57 1/2
Gen Leather	32 1/2	32 3/4	32 1/2
Cuban Cane Pfd	67 1/2	67 3/4	67 1/2
Chile	27 1/2	27 3/4	27 1/2
Ches & Ohio	75 1/2	75 3/4	75 1/2
Chile	27 1/2	27 3/4	27 1/2
Corn Products	17 1/2	17 3/4	17 1/2
Cosden Oil	28 1/2	28 3/4	28 1/2
Cong Gas	32 1/2	32 3/4	32 1/2
Col Fuel & Iron	34 1/2	34 3/4	34 1/2
Columbia Gas	34 1/2	34 3/4	34 1/2
Cont Can	121 1/2	121 3/4	121 1/2
Coco Cola	64 1/2	64 3/4	64 1/2
Chub Am Sugar	61 1/2	61 3/4	61 1/2
Dal & Hudson	108 1/2	108 3/4	108 1/2
Davidson Chem	51 1/2	51 3/4	51 1/2
Dupont	128 1/2	128 3/4	128 1/2
Erie 1st Pfd	32 1/2	32 3/4	32 1/2
Famous Players	66 1/2	66 3/4	66 1/2
Gen Electric	221 1/2	221 3/4	221 1/2
Gen Motors	154 1/2	154 3/4	154 1/2
Guif Steel	80 1/2	80 3/4	80 1/2
Houston Oil	69 1/2	69 3/4	69 1/2
Hudson Motors	28 1/2	28 3/4	28 1/2
Inter Pete	19 1/2	19 3/4	19 1/2
India Alcohol	107 1/2	107 3/4	107 1/2
Imperial Oil	107 1/2	107 3/4	107 1/2
Kennecott	36 1/2	36 3/4	36 1/2
Kelly Spinning	17 1/2	17 3/4	17 1/2
Lough Valley	68 1/2	68 3/4	68 1/2
May Stores	51 1/2	51 3/4	51 1/2
Marland Oil	87 1/2	87 3/4	87 1/2
Mack Truck	19 1/2	19 3/4	19 1/2
New Haven	19 1/2	19 3/4	19 1/2
N Y Central	100 1/2	100 3/4	100 1/2
Nor & West	121 1/2	121 3/4	121 1/2
North Am Co	23 1/2	23 3/4	23 1/2
Pennsylvania	47 1/2	47 3/4	47 1/2
Pan Am A	47 1/2	47 3/4	47 1/2
Pan Am B	45 1/2	45 3/4	45 1/2
Panta Sugar	68 1/2	68 3/4	68 1/2
Pure Oil	24 1/2	24 3/4	24 1/2
Pacific Oil	81 1/2	81 3/4	81 1/2
Rep I & Steel	55 1/2	55 3/4	55 1/2
Rubber	22 1/2	22 3/4	22 1/2
Sinclair Oil	22 1/2	22 3/4	22 1/2
Southern Pac	86 1/2	86 3/4	86 1/2
Southern Ry	53 1/2	53 3/4	53 1/2
St Paul Pfd	25 1/2	25 3/4	25 1/2
Stewart Warner	100 1/2	100 3/4	100 1/2
Studebaker	61 1/2	61 3/4	61 1/2
Stan Oil Ind	37 1/2	37 3/4	37 1/2
Stan Oil N Y	110 1/2	110 3/4	110 1/2
Stan Oil Cal	61 1/2	61 3/4	61 1/2
Texas Company	42 1/2	42 3/4	42 1/2
Tobacco B	38 1/2	38 3/4	38 1/2
Timken	38 1/2	38 3/4	38 1/2
U S Steel	102 1/2	102 3/4	102 1/2
Utah Copper	67 1/2	67 3/4	67 1/2
Vanadium Steel	30 1/2	30 3/4	30 1/2
Westinghouse	69 1/2	69 3/4	69 1/2
Wabash A	46 1/2	46 3/4	46 1/2
Wool	73 1/2	73 3/4	73 1/2
Wool—Sterling	48 1/2	48 3/4	48 1/2

## MONTEAL MARKET

Stocks to 12 noon.

Open	High	Low
Am Beet Sugar	40 1/2	40 3/4
Allied Chem	48	48 1/2
Am Can	115 1/2	115 3/4
Am Locomotive	73 1/2	74 1/4
Am Smelters	61 1/2	61 3/4
Am Telephone	22 1/2	22 3/4
Anacosta	33 1/2	33 3/4
Balt & Ohio	122 1/2	122 3/4
Bald Locomotive	122 1/2	122 3/4
Beth Steel	55 1/2	55 3/4
Bonch	12 1/2	12 3/4
Chandler	57 1/2	57 3/4
Gen Leather	32 1/2	32 3/4
Cuban Cane Pfd	67 1/2	67 3/4
Chile	27 1/2	27 3/4
Ches & Ohio	75 1/2	75 3/4
Chile	27 1/2	27 3/4
Corn Products	17 1/2	17 3/4
Cosden Oil	28 1/2	28 3/4
Cong Gas	32 1/2	32 3/4
Col Fuel & Iron	34 1/2	34 3/4
Columbia Gas	34 1/2	34 3/4
Cont Can	121 1/2	121 3/4
Coco Cola	64 1/2	64 3/4
Chub Am Sugar	61 1/2	61 3/4
Dal & Hudson	108 1/2	108 3/4
Davidson Chem	51 1/2	51 3/4
Dupont	128 1/2	128 3/4
Erie 1st Pfd	32 1/2	32 3/4
Famous Players	66 1/2	66 3/4
Gen Electric	221 1/2	221 3/4
Gen Motors	154 1/2	154 3/4
Guif Steel	80 1/2	80 3/4
Houston Oil	69 1/2	69 3/4
Hudson Motors	28 1/2	28 3/4
Inter Pete	19 1/2	19 3/4
India Alcohol	107 1/2	107 3/4
Imperial Oil	107 1/2	107 3/4
Kennecott	36 1/2	36 3/4
Kelly Spinning	17 1/2	17 3/4
Lough Valley	68 1/2	68 3/4
May Stores	51 1/2	51 3/4
Marland Oil	87 1/2	87 3/4
Mack Truck	19 1/2	19 3/4
New Haven	19 1/2	19 3/4
N Y Central	100 1/2	100 3/4
Nor & West	121 1/2	121 3/4
North Am Co	23 1/2	23 3/4
Pennsylvania	47 1/2	47 3/4
Pan Am A	47 1/2	47 3/4
Pan Am B	45 1/2	45 3/4
Panta Sugar	68 1/2	68 3/4
Pure Oil	24 1/2	24 3/4
Pacific Oil	81 1/2	81 3/4
Rep I & Steel	55 1/2	55 3/4
Rubber	22 1/2	22 3/4
Sinclair Oil	22 1/2	22 3/4
Southern Pac	86 1/2	86 3/4
Southern Ry	53 1/2	53 3/4
St Paul Pfd	25 1/2	25 3/4
Stewart Warner	100 1/2	100 3/4
Studebaker	61 1/2	61 3/4
Stan Oil Ind	37 1/2	37 3/4
Stan Oil N Y	110 1/2	110 3/4
Stan Oil Cal	61 1/2	61 3/4
Texas Company	42 1/2	42 3/4
Tobacco B	38 1/2	38 3/4
Timken	38 1/2	38 3/4
U S Steel	102 1/2	102 3/4
Utah Copper	67 1/2	67 3/4
Vanadium Steel	30 1/2	30 3/4
Westinghouse	69 1/2	69 3/4
Wabash A	46 1/2	46 3/4
Wool	73 1/2	73 3/4
Wool—Sterling	48 1/2	48 3/4

## CHICAGO GRAIN MARKET

Chicago, March 17.

To 12 noon.	Open	High	Low
May wheat	104 1/2	104 3/4	104 1/2
July wheat	104 1/2	104 3/4	104 1/2
Sept. wheat	104 1/2	104 3/4	104 1/2
May corn	77 1/2	77 3/4	77 1/2
July corn	77 1/2	77 3/4	77 1/2
Sept. corn	77 1/2	77 3/4	77 1/2

## WINNIPEG GRAIN MARKET

Winnipeg, March 17.

To 12 noon.	Open	High	Low
May wheat	101 1/2	101 3/4	101 1/2
July wheat	101 1/2	101 3/4	101 1/2
Sept. wheat	101 1/2	101 3/4	101 1/2
May oats	40 1/2	40 3/4	40 1/2
July oats	40 1/2	40 3/4	40 1/2
Sept. oats	40 1/2	40 3/4	40 1/2

## SHIPPING

PORT OF ST. JOHN  
Arrived Saturday

Ship	From	Arrived
Str Tevlot	2108, Murley, West Indies	via Bermuda
Str Canadian	1812, Baker, West Indies	
Str Marburn	6822, Clews, Glasgow	

Sailed Saturday

Ship	To	Sailed
Str Canadian	1812, Baker, West Indies	
Str Marburn	6822, Clews, Glasgow	
Str Canadian	1812, Baker, West Indies	
Str Marburn	6822, Clews, Glasgow	

## PROVINCES WILL ACT ON BLUE SKY LAWS

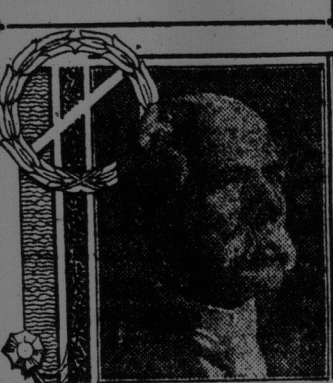
New Brunswick and other provinces with Blue Sky Laws that have been found by the courts to be ultra vires insofar as their control of companies incorporated under Federal Acts are concerned are likely, says the Federal Government, to unite in asking the Federal Government to bring such companies within the jurisdiction of the Blue Sky Laws of the various provinces in which they may operate.

Steps in that direction have been discussed, according to information which comes to the Federal Government, and definite action is expected to be taken at an early date.

The ostrich industry was started in Africa in 1865.

The mean distance of Mars from the earth is 141,500,000 miles.

## Crimean Veteran Praises "Fruit-a-tives"



**MAJOR GEO. WALKER**  
Major George Walker, now a familiar figure in Chatham, Ontario, is one of the men who went through the terrible Indian of the Crimean War and the Indian Mutiny, serving under Lord Roberts. Fierce hand-to-hand fighting and continual exposure left me a great sufferer from Rheumatism, so much so that my legs swelled up, making it impossible for me to walk. My bowels were so constipated that I was in terrible shape until I began to use "Fruit-a-tives." They relieved me both of the Rheumatism and the Constipation. Today, I enjoy perfect health—no more Rheumatism or Constipation.

And in another letter written December 1st, 1923 (eleven years after), Major Walker says: "Fruit-a-tives are keeping me in the best of health and I shall never be without them."

"Fruit-a-tives" are the famous Fruit Treatment—intensified fruit juices combined with tonics—that make you well and keep you well. 25c and 50c—at all dealers or from Fruit-a-tives, Limited, Ottawa, Ont.

## POSTAL CLERKS VIEWS.

To the Editor of The Times-Star:  
Sir,—There has been considerable discussion recently in the press regarding the civil service employees, stating one of the causes of the excessive taxation is the great overmanning of the service and crying out for retrenchment.

As the post office employees come into or leave into this argument, may I, on behalf of the postal clerks, point out to your readers justification for the staff and some observations regarding salary, duties, hours of work and examinations, which they are required to pass each year in order that they may render to the public the best and greatest service of any public institution in Canada.

There has been no general increase in salary since 1912 and approximately 90 per cent of postal clerks receive a salary of \$1,200 a year. Postal clerks work a forty-four hour week with very irregular hours, including night and early morning, the clerks being divided up into several staffs beginning their duties at 6, 7, 8, 9 a.m., 12.30 and 5 p.m., finishing their eight hours at 5, 6, 8.30, 9 and 11 o'clock p.m., when night staff comes on duty till 7 o'clock next morning, giving to the public a continuous service for 24 hours, including the staff working on statutory holidays.

General delivery window opens from 6 a.m. and closes at 9 p.m., fifteen hours. Money order branch is open for service from 8 a.m. till 6 p.m., ten hours. Registration branch is open from 7 a.m. till 7 p.m., twelve hours, with clerks on duty for the other twelve hours, receiving and despatching mails; therefore you may readily understand by early morning and late evening hours, Sunday and statutory holidays, that it requires a large number of clerks to man the several staffs and give to the public the service that is demanded by the large amount of mail matter that continuously passes through the post office from time to time.

Postal clerks upon entering the service are required to pass a civil service examination equal to high school leaving, and for thirty years, or until they attain the age of sixty, they are required to pass two examinations a year to qualify for their annual increase and retain their positions. These examinations are held by the district examiner for the Maritime Provinces, and consist of postal laws and regulations and a sortation test on distribution of mail matter and train service for the Maritime area, N. B. and P. E. I. and Nova Scotia, city delivery and box holders, requiring an average of 75 per cent. and 80 per cent. to pass;

## By No Means Allow Your Bowels To Get Constipated

If you allow your bowels to become constipated you will have bilious attacks, sick headache, coated tongue, foul breath, sallow complexion, specks floating before the eyes, whites of the eyes dull and yellow, heartburn, water brash, etc.

Keep your bowels regular by using Milburn's Laxa-Liver Pills, by doing so you will be able to keep well and have no more trouble with your liver. Mrs. I. Rubin, Halbrite, Sask., writes: "I was very badly troubled with constipation, often had bad headaches, my tongue was coated, and I felt anything but well."

After taking Milburn's Laxa-Liver Pills I have felt much better as they certainly did me a lot of good."

Milburn's Laxa-Liver Pills are 25c, a vial at all dealers, or mailed direct on receipt of price by The T. Milburn Co. Limited, Toronto, Ont.

Total of 960 persons were killed in automobile accidents in California during 1922.

## COAL AND WOOD

### Special Delivery Domestic Selected COAL

Ton \$13.00 Put in 1/2 Ton \$6.50 Put in Bags 3-5-6  
Hard, Soft, Stovoids  
BESCO COKE

Domestic Coal Co.  
PHONE IT 2554.

### Broad Cove Coal!

We handle the Best Broad Cove Coal on the market. Why because it is the old original No. 1 double screened, free from stone and smoke. The best is the cheapest.

McGivern Coal Co.  
12 Portland St. Phone Main 42.

## COAL AND WOOD

### COAL

American Anthracite  
Welsh Anthracite Stovoids  
Scotch Anthracite  
Besco Coke and Soft Coal.

R.P. & W.F. STARR, LTD.  
49 Smythe St. - 159 Union St.

### BESCO COKE

and Dry Hardwood  
Prompt Delivery.  
D. W. LAND,  
Eris Street Siding. Main 4055.  
Evening 874.

### COAL and ASHES

Do you have to take up ashes every morning? Ask us to tell you more about a hard coal that takes three to four days to fill the ash pan.

"Saves Money"  
"Enlightens Labor"

### CONSUMERS COAL CO. LIMITED

68 PRINCE WILLIAM ST.  
TELEPHONE: MAIN 1919

### Same Coal

For Heater and Range  
? is sometimes all right, but often won't work because of the difference in stoves. Let us show you why we offer you

EMMERSON SPECIAL,  
KIMBERLEY,  
ACADIA NUT,  
BESCO COKE

Phone M. 3938

EMMERSON FUEL CO., Ltd.  
115 City Road.

### BESCO COKE

ACADIA PICTOU  
McBEAN PICTOU

For a quick, hot, lasting fire try THRIFTY, \$10.25 per ton, ground floor.

H. A. FOSHAY  
408 Main Street. Phone M. 3808

### ON HAND

DOUBLE SCREENED  
BROAD COVE  
ACADIA PICTOU  
PEERLESS LUMP  
HARD AND SOFT WOOD

### SUN COAL & WOOD CO.

78 St. David St. - Phone M. 1346

### Maple Leaf Soft Coal

Screened \$12.00 per Ton  
Exceptionally low price on Run of Mine in car lots and less.

Phone M. 2252

Atlantic Fuel Co., Ltd  
10-14 Britain St.