

# The Robert Simpson Company, Limited

## Getting Settled for the Winter

What a host of little details there are about your home that need attention these days—curtains to be put up—floors to be done over—rugs to replace—cellar and kitchen fixings to fill out—it's a list always ready for revision. There are some interesting helps listed in this column that mean many dollars saved in your settling-down process.

## Last Day of the Great September Blanket Sale

In the September Blanket Sale we have made a wonderful record, turning out enormous quantities of blankets, and splendid blankets for the money. Perhaps, then, it will not surprise you that Wednesday our offerings are simply a marvel of what your money can do here, for it is the final day on which you can supply your Winter blanket needs at the sale prices which have been strengthened to clear the remaining sale stocks between 8.30 a.m. and closing time.

### \$3.45 WHITE BLANKETS ONLY \$2.69 PAIR.

**White Union Wool Blankets**, pink or blue borders, size 60 x 80 inches, about 100 pairs to clear. Regularly \$3.45 pair. Sale price, Wednesday . . . . . 2.69

### LARGE HEAVY BLANKETS GREATLY REDUCED.

**White Blankets**, made from an extra fine quality of pure Saxony wool, closely woven and evenly napped; these will maintain their soft, lofty finish after washing, weight 10 lbs., size 72 x 90 inches. Regularly \$8.00 pair. Sale price, Wednesday . . . . . 6.35

### \$9.00 CARDINAL BLANKETS CLEARING AT \$6.35 PAIR.

Nothing but the finest quality of pure Saxony wool used in the making of these blankets; color guaranteed absolutely fast; soft, warm and cosy; a little line we are clearing of about 25 pairs, weight 10 lbs., size 72 x 92 inches. Regularly \$9.00 pair. Red price, Wednesday . . . . . 6.35

### NEW IMPORTED BED COMFORTERS.

Covered with a good downproof English sateen and filled with a light, fluffy down filling, pretty colorings and designs, with plain panels to match; size 70 x 70 inches. Sale price Wednesday . . . . . 6.95

### BED SPREADS REDUCED FOR QUICK SELLING.

**White Crochet Bed Quilts**, woven in good designs and finished with hemmed ends, size 78 x 90 inches. Regularly \$2.00 and \$2.25. Special Wednesday . . . . . 1.69

### BLEACHED ENGLISH SHEETS.

Free from dressing, large size, 70 x 90 inches, and finished with hemmed ends. Special Wednesday, pair . . . . . 1.95

### White Saxony Flannelette, 32 inches wide. Clearing Wednesday, yard . . . . . 15

### NEW DAMASK TABLE CLOTHS.

In a range of pretty oval designs, scalloped all round, size 72 x 90 inches. Special Wednesday . . . . . 3.50 (Fourth Floor)

## Dining Room Furniture

**Two Only Buffets**, various designs, in quartered oak finish; rich golden color; the drawers and cupboards are conveniently arranged; British bevel mirror at back. Regularly \$18.00 to \$21.00. Special at . . . . . 14.95

**Two Only Buffets**, in selected quarter-cut oak, golden finish; have two top drawers; double door cupboard, fitted with leaded lights; long linen drawer; British bevel mirror and two display shelves. Regularly \$34.00. Special at . . . . . 24.95

**Two Only Extension Dining Tables**, "Colonial" design, in selected quarter-cut oak, golden finish; have 48-inch tops, deep rim, and easy-running slides; extending to 8 feet; neatly designed pedestal. Regularly \$43.00 and \$47.00. Special Wednesday . . . . . 31.35

**One Set Only Dining-room Chairs**, made of solid quarter-cut oak, in golden finish; have loose slip seats and upholstered backs; covered in high-grade leather. Regularly \$36.00. Special Wednesday . . . . . 23.95

**Dining-room Chairs**, in selected quarter-cut oak, golden finish, set consists of five side and one arm chair; the slip seats are finely upholstered and covered in leather. Regularly \$38.00. Special Wednesday . . . . . 23.95

**Two Sets Only Dining-room Chairs**, consisting of five small and one arm chair, in fumed finish; have well-upholstered seats, covered in genuine leather. Regularly \$18.50. Special . . . . . 13.95

**Three Only Dinner Wagons**, in solid quarter-cut oak, fumed finish; have two cutlery drawers and one long drawer, deep shelves underneath. Regularly \$55.00. Wednesday, half price, at . . . . . 27.50

**China Cabinet**, in selected quarter-cut oak, fumed finish, has double glass doors and glass ends; adjustable shelves. Regularly \$34.00. Special, half price, Wednesday . . . . . 17.00

**China Cabinet**, in solid quarter-cut oak, fumed finish, has glass door and glass ends. Regularly \$18.50. Special, half price, Wednesday 12.75

## Second Day of the Drapery Opening

We have planned for Wednesday a display of living-room draperies, of correct furniture coverings, of suitable fabrics for door curtains, of the right kind of net curtains or lace curtains for your windows, of the most pleasing materials for the window over-curtains and valances. Such comfortable, cosy, artistic combinations as can be purchased at little cost. This display will mean for many the easy solution of the problem of furnishing the living-room. There are other inducements, too, for you to come on Wednesday; there are many materials, bought specially for special selling and marked much below the usual prices. Economy will be a strong incentive.

**French Tapestries for Upholstering**—Soon, with war conditions in France, these fabrics will have disappeared from the market. Yet this collection, shipped just after the opening of hostilities, is priced not above but much below the usual standard. There are some very fine verdure and small conventional designs, usually marked at \$2.25 and \$2.50 that we have included for Wednesday's sale, yard . . . . . 1.85

**Lace Curtain Nets, 4c Yard**—This shipment has just arrived from England, showing all of the latest styles, more particularly the small conventional patterns that are very popular just at present. These in quality are actual 60c nets. Wednesday's price, yard . . . . . 44

**Linen Fillet Nets, 85c Yard**—The exact linen color, showing the latest production in genuine fillet pattern; all full width; specially suitable for the living-room. Wednesday, yard . . . . . 1.25

**New Plain Fabrics for Portieres, at \$1.25 Yard**—Plain Reps, Small Figured Arranges, new basket weaves, plain Assyrian cloth, for living-room, door or archway; they may be trimmed with galoon or tapestry bands or used perfectly plain. These are the newest materials for portieres. They are specially priced for Wednesday, yard . . . . . 1.25

**Very Special Offer, Two Days Only**—We will measure for and make up without charge, ready to hang, all portieres purchased on Wednesday or Thursday.

### WINDOW SHADES AT SPECIAL PRICES.

**Combination Color Shades**, regular window size, 37 x 70 inches, on Hartshorn rollers, green and white or green and cream, complete with ring pull. Regularly 60c. Wednesday, each . . . . . 49

**Trimmed Window Shades**, white or cream, with insertion trimming, mounted on best rollers, 28 x 70 inches. Regularly 70c. Wednesday, each . . . . . 49

**Plain Window Shades**, green, cream or white, 36 x 70 inches, on reliable roller. Regularly 25c. Wednesday, each . . . . . 19

### AWNING TAKEN DOWN.

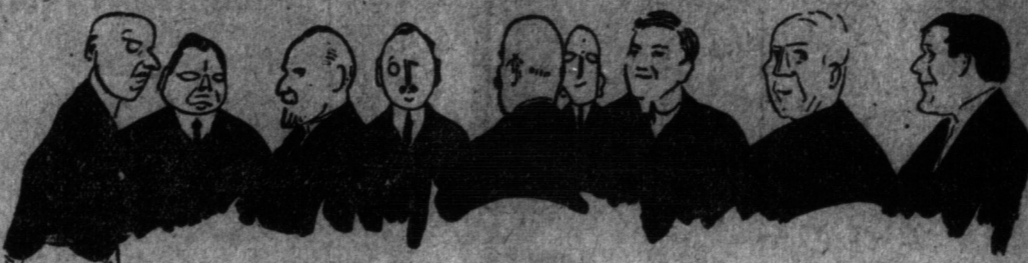
Please us to send a man to take down your awnings and put them away for the winter. If you wish we will store them for you and put them up again next spring.

### UPHOLSTERING DONE AT SPECIAL PRICES.

Let us estimate on such work as you may require. We will send to your home and quote prices on your work that are sure to interest you.

## For Meals Outside of Home Simpson's is Best

Lunch or Dinner, 11.30 to 2 p.m., 25c Today.  
Today's selection—Cold—Cut of roast beef, with pickled beets. Bread and butter. Tea or coffee and ice cream.  
Hot—Braised forequarter of lamb, with vegetables. Boiled or mashed potatoes. Bread and butter. Steamed cottage pudding. Lemon syrup sauce. Tea or coffee.  
In the Afternoon—Ice cream and sodas, 5c, with cake, 10c; and afternoon tea at 15c or two persons for 25c.



## All Styles and Conditions of Men

Will find satisfaction in the array of really fashionable, moderate priced clothing that is offered day by day in the

## Simpson Men's Store

Some of the prices are extremely low, as for example the wonderful range of

## Men's Fall Suits on Sale Wednesday \$7.95

250 men can supply themselves with smart, well-made suits Wednesday at this remarkable price. It's economy of the sort that does not advertise itself by lack of style or quality. They are of pliable English tweeds and worsted finished tweeds, in grays, browns or black and white mixtures. Many are in almost plain patterns, and some show a stripe. The coats are cut single-breasted, three-button style. The vest is single-breasted, and the trousers fit comfortably and hang well. Twill mohair linings. Sizes 34 to 44. Regularly \$10.50, \$12.00, \$13.50 and \$15.00. Wednesday . . . . . 7.95

**English Golf Coats at \$8.00**—The English manufacturers are authority for design and first for comfort and materials. Hence comfort is assured. There is no binding across the back or around shoulder; perfect freedom of motion is provided for. An Irish tweed coat in green, fawn or brown mixed pattern, with rough surface finish, is cut in single-breasted, three-button style to button well up in front; has Norfolk back, belted in at waist and deep centre vent; unlined; sizes 36 to 42. Price . . . . . 8.00

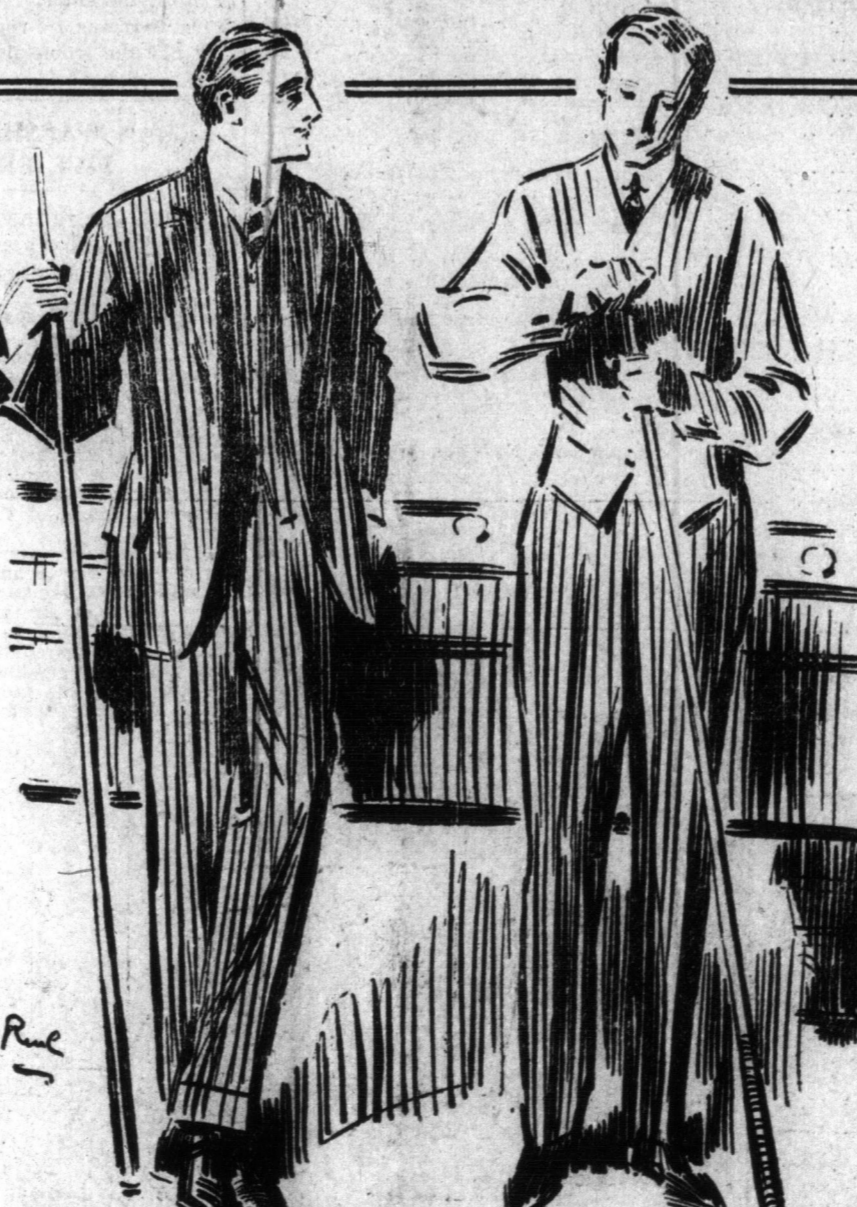
**Chauffeurs' Heavy Motor Coats**—English made and most comfortable. Of heavy English beaver cloth, in dark green or dark blue. Double-breasted ulster style, with heavy storm collar, two rows of silver-plated buttons. Lined throughout with heavy tweed. Very warm and serviceable. Sizes 36 to 44. Price . . . . . 18.50

**An Ideal Leather Coat for Motoring**—With double protector, buttoned through fronts, close-fitting sleeves at cuff with elastic bands. Can be worn under any other overcoat. Indispensable for motoring. Price . . . . . 15.00

### BOYS' BLUE SERGE SUITS, \$4.69.

95 dressy, double-breasted bloomer suits, splendidly tailored from English serges in navy blue, with strong twilled linings. Sizes 25 to 34. Wednesday, 8.30 special, at . . . . . 4.69

**Boys' Chinchilla Overcoats, \$2.95**—100 gray and blue chinchilla overcoats priced below actual cost. Splendidly tailored and lined with flannel finished tweeds. Close fitting collar and pleated back, with half belt. Sizes 21 to 26. Wednesday special . . . . . 2.95



## Time for the Fall Hat

**Men's Soft Hats, \$1.50**—Fine imported English felt, in the velvet finish, dressy Fall style; colors olive, navy, brown and black. Special at . . . . . 1.50

**Men's Derby Hat**, in the new high crown shape, slightly squared on top, with rolling or flat set brim; a popular Fall design, made from fine quality English fur felt, at . . . . . 2.00

**A Very Fine Quality Soft Hat**, in a famous Italian make; in large variety of smart styles, and in a beautiful range of colors; men who want a first-class hat should see this showing. Specially priced at . . . . . 3.50

## Men's Underpriced Furnishings

**"Pen-Angle" Brand Fleece-Lined Underwear**, shirts and drawers; pure wool, sanitary fleece; guaranteed unshrinkable; all sizes 34 to 44. Special, Wednesday . . . . . 4.9

**Men's "Pen-Angle" Natural Wool Underwear**, in the light Shetland shade, double breast to the shirts, sateen band to the drawers; sizes 34 to 44. Special, Wednesday . . . . . 1.00

**Men's English Flannelette Nightrobes**, large body, full length, splendid stripe designs, in pink, blue or helio effects. Sizes 15 to 20. Special Wednesday . . . . . .75

**A BARGAIN IN SWEATER COATS.**  
**200 Men's Heavy-Weight Sweater Coats**, in mostly plain gray colors, and gray with assorted color trimmings; all fancy weaves; each has a high collar. Regularly \$4.00, \$4.50 and \$5.00. Wednesday . . . . . 2.98

## Semi-Annual Toilet Goods Sale Begins Wednesday

With our Fall Sale in prospect, the buyer for our Toilet Goods Department made a regular campaign this Summer, and succeeded in rounding up a splendid sale stock of every needful thing for the care of the person. The sale begins now, just when winter war and rough weather may be expected, with a multitude of substantial savings on absolute necessities. Watch the daily list and buy promptly, for not all the special stocks are in large quantities.

- Oatmeal Toilet Soap**. Sale price, 8 cakes for . . . . . 21
- Brown Windsor Toilet Soap**. Sale price, per dozen cakes . . . . . 9
- Castile Soap**, 3-lb. bar. Sale price, per bar . . . . . 17
- Supermilled English Toilet Soap**, 6-oz. cake—Buttermilk, Oatmeal, Glycerine and Cucumber. Sale price, 2 cakes for . . . . . 18
- Twirl Bar Castile Soap**. Sale price, 4 bars for . . . . . 19
- Toilet Paper**, in rolls. Sale price, 8 rolls for . . . . . 25
- Toilet Paper**, in packages, 1000 sheets to each package. Sale price, 3 packages . . . . . 18
- New Process White Crepe Toilet Paper**, in rolls. Sale price, 4 rolls for . . . . . 18
- Imported Toilet Waters**. Sale price, One-Third Off Regular Prices
- Imported Eau de Cologne**, 3 1/2-oz. bottle . . . . . 19
- Mitcham's English Lavender Water**, 1 1/2-oz. bottle. Sale price . . . . . 13
- Imported Perfumes**, in cut glass bottles, in satin lined case, violet, white rose, lily of the valley and lilac. Sale price . . . . . 75
- Puritan Corymbis Talcum Powder**, 1-lb. tins. Sale price . . . . . 10
- Camphor Ice and Lanoline**, in tins. Sale price, 2 for . . . . . 9
- French Wool Powder Puffs**. Sale price . . . . . Half Price
- Meadow, Violet and Rosadora Talcum Powder**. Sale price, 3 tins for . . . . . 25
- Cold Cream**, in tubes. Sale price . . . . . Half-Price
- Chesebrough's Vaseline Cold Cream**. Sale price, 2 for . . . . . 16
- Nail Files**. Sale price, each . . . . . 5
- Simpson's 15c Leader Tooth Brush**. Sale price . . . . . 10
- Real Ebony Hair Brushes**, with 11 rows bristles. Sale price . . . . . 59
- Travellers' Samples of Genuine Eboty Hair and Military Brushes**. Sale price . . . . . 25 Per Cent. Off Regular Prices
- Brush and Comb Set**. Sale price . . . . . 25
- Dupont's French Ivory Toilet Goods**. Sale price, 25 Per Cent. Off Regular Prices.

## TWO SPECIALS FOR WEDNESDAY ONLY.

**Italian Balm**. Sale price, 2 bottles for . . . . . 25

**Palm Olive Toilet Soap**. Sale price, 3 cakes for . . . . . 25

## Lovely New Seamless and Seamed Wilton Rugs at Reduced Prices

This is a rug sale of more than usual interest, owing to the fact that the goods offered are new goods, exactly the grades that are in popular demand and in some of the most beautiful colors and designs for present day furnishings. Excellent reproductions of such well known Orientals as the following are included: Suruk, Saraband, Anatolian, Khorassan, Ghordes.

The seamless rugs are all in one size 9.0 x 12.0, special Wednesday sale price . . . . . 66.75

The seamed Wilton Rugs are reduced in price in four different sizes:

- 6.3 x 9.0 Special Wednesday Sale . . . . . \$19.50
- 6.3 x 10.6 Special Wednesday Sale . . . . . 24.50
- 9.0 x 10.6 Special Wednesday Sale . . . . . 33.50
- 9.0 x 12.0 Special Wednesday Sale . . . . . 38.50

## GOOD SCOTCH TAPESTRY CARPETS AT 55c A YARD.

A big selection of new designs in many different styles and colors. For rooms, 27 inches wide, special value 55c a yard. For stairs, 22 1/2 and 27 inches wide, special value 55c a yard.

## HEAVY FLOOR OIL CLOTH AT 27c A SQUARE YARD.

This is a low price for a quality that is serviceable and has a good appearance. A good range of bright new colors and designs in the following widths: 36, 46, 54, 72 and 90 inches wide, one price per square yard . . . . . 27

## ATTRACTIVE AMERICAN WOOL AND FIBRE RUGS FOR BEDROOMS.

These rugs come about the same in price as a Union Rug, but have a very much better style and appearance. Green and tan, blue and tan, and brown and tan:

- 6.0 x 9.0, Special Value . . . . . \$5.00
- 8.3 x 10.6, Special Value . . . . . 6.50
- 9.0 x 12.0, Special Value . . . . . 7.35

## Matting Suit Cases

Made of strong fibre matting reinforced leather corners; brass lock and catches; swing handle, and short outside straps; full lined, and blouse pocket; size 24 in. x 26 in. Regularly \$2.10 and \$2.30, for . . . . . 1.95

## The Grocery List

- TELEPHONE TO DEPARTMENT, ADELAIDE 6100.
- 3,500 packages of Redpath's Granulated Sugar, in 5 lb. cartons, only two cartons to a customer. Regularly 37c. While they last, each . . . . . 32
  - 2,000 stone Fresh Rolled Oats, Per stone . . . . . 49
  - Finest Sugar Cured Hams, half or whole. Per lb. . . . . 23
  - Choice Evaporated Appricots, new fruit. Per lb. . . . . 19
  - French Spaghetti, 3 packages . . . . . 25
  - Clark's Pork and Beans, in chili sauce, tall tins. 3 tins . . . . . 25
  - Finest Canned Tomatoes, 3 tins . . . . . 25
  - Canned Corn or Peas, 3 tins . . . . . 23
  - Mustard in bulk. Per lb. . . . . 20
  - Finest Preserved Ginger, Per lb. . . . . 23
  - Pure Pickling Spice, best quality. Per lb. . . . . 17
  - Pure White Wine Vinegar, XXX. Per gallon . . . . . 25
  - Finest Sherrington, 3 lb. pall . . . . . 42
  - Fresh Buttermilk, Gallon . . . . . 15
  - Teller's Cream Soda Biscuits, 3 lb. box . . . . . 24
  - Cowan's Perfection Cocoa, 1/2 lb. tin . . . . . 22
  - Choice Lima Beans, 3 lbs. . . . . 19
  - Choice Pink Salmon. Per tin . . . . . 11
  - Smoked Fish Loaf and Salmon, Vatel brand, 2 tins . . . . . 25
  - Orisco Shortening. Per tin . . . . . 29
  - 1,000 lbs. Fresh Roasted Coffee, in the bean, ground pure or with chicory. Wednesday, per lb. . . . . 27

# The Robert Simpson Company, Limited

First Mortgage Fu  
We can place your funds  
in a safe and desirable  
investment, yielding 5%  
annually. See  
TANNER & CO.  
Money Brokers, Tanners  
25-27 Adelaide St. W.

PROBS— Moderate v  
fine; with

GER  
GER

LITTLE P  
OR CEREN  
AT FU

Remains of Sir J  
ney Buried in M  
Cemetery

PUBLIC MEN

Members of  
Judges and Civil  
Paid Respe

By a Staff Reporter.  
MORRISBURG, Ont.,  
premier of Ontario had  
rest in the tomb of his  
a little old-fashioned c  
hillside fronting a str  
Lawrence River, the bo  
Ontario statesman was  
afternoon and a whol  
turned out to do him  
fifal rain storm which  
all day gathered as it  
ceded, and at the mon  
mourner assembled ab  
broke in a smart patter  
ten minutes the coms  
with bare heads as the  
read out. The body was  
into a vault in the v  
plot and the service wa  
Little Pomp or C  
There was little pom  
about the administrati  
sacred rites. There  
circumstances uniting  
the solemnity of the oc  
time since the news of  
flushed out across Ca  
sense of loss been so  
sopped. The effect of  
moments at the grave  
bring home more clea  
the fact that this deat  
havo into other peo  
that here a pin was l  
which many subsidia  
had been held together.

The fact that Sir Jan  
ad so long on the con  
world did not detract  
thetic appeal of the  
accorded him. Person  
feeling that for the m  
the proof and touchst  
politics had been rem  
Winding slowly up  
road track, the funeral  
thru iron gateways to  
little brown stone chur  
in recent years by the  
scores of people who h  
the surrounding coun  
lines of approach and  
a detachment from th  
dotted hats and bowe  
procession approached  
then proceeded in the  
church.

Familiar Hymn  
It was late in the  
funeral was settling do  
the choir began to ch  
some the old familiar  
My God to Thee." T  
lamps alone were lit a  
faded out faintly d  
faces of the victors  
auditorium. There v  
departure from the res  
ves, but the solemn  
ment was enhanced  
triumphant ringing  
Apostle Paul, "O, Dea  
sing? O, Grave, wh  
tory? and the choir d  
time, "Jesus, Saviour,  
with the assemblage i  
was offered by Rural  
who has the parish in  
the War as it was bor  
portico and down the  
the cemetery followed  
relatives of Sir James  
ing two by two car  
cabinets and lengthen  
rear, representatives of  
religious organization  
sprinkling of civil ser  
had come by train; g  
sentatives in the legis  
almost to a man; m  
from even the most  
westerly ridings to t  
ens of respect.

The venerable Cam  
grave side entered  
closing syllables of t  
A heavy gust of rain  
the river a passing fi  
heavily and the fune  
Crowd slowly E  
The crowd slowly m  
enclosure the visitors  
the road to the tra  
minutes the special tr  
began the return jour  
There were not  
during the day to a  
which the province he  
Whitney. At stations  
suggested, whirled flag  
smar, and at two or th  
stops small parties w  
view the remains. M  
were three old men f  
Continued on Page