

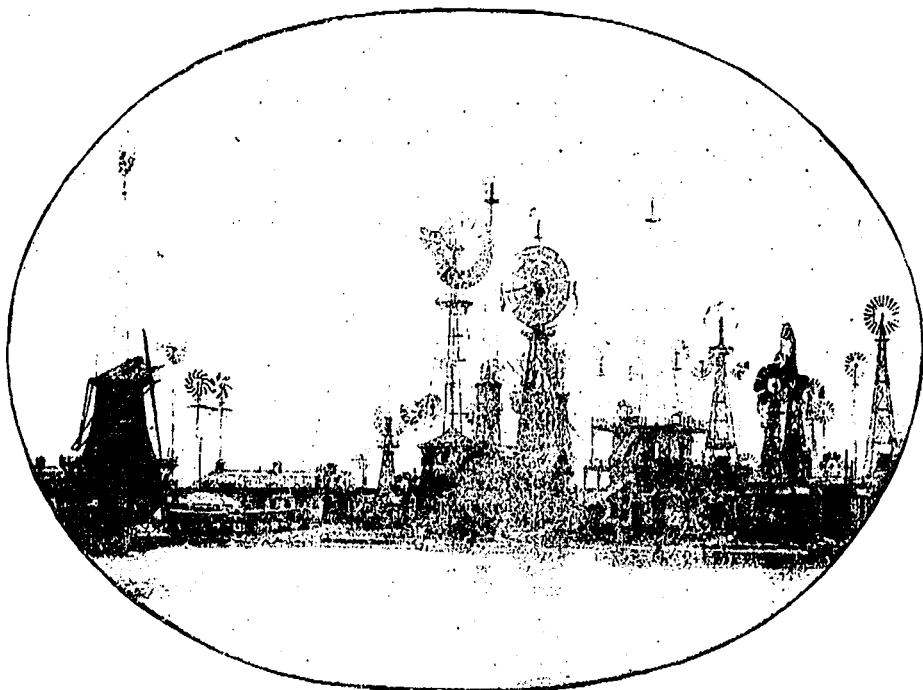
## Our World's Fair Views.

SPECIALLY ENGRAVED FOR *Massey's Illustrated* FROM "SNAP-SHOT" PHOTOGRAPHS TAKEN BY W. E. H. MASSEY.

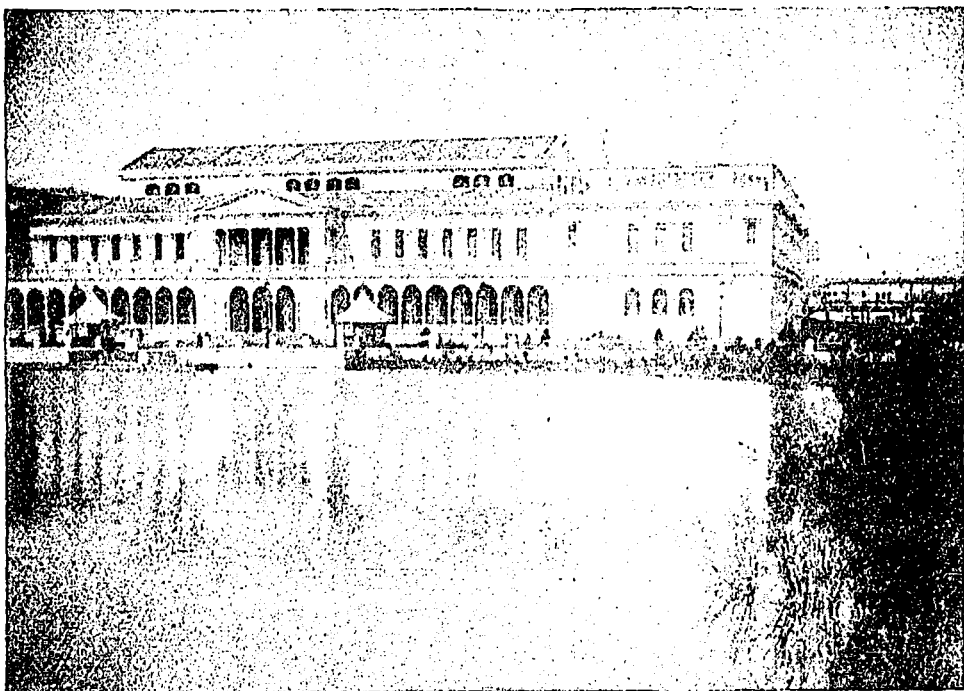
THE MASSEY'S ILLUSTRATED World's Fair Views have received favorable comment at home and abroad, and we have had applications for duplicate sets from many different publishers.

It is no mean honor to be noticed in the long established and conservative old English periodical, known as *The British Journal of Photography*, published in London, Eng.—at least so photographers of good standing say. The following is their notice of Mr. Massey's World's Fair Views, which appeared in their issue of Oct. 20th, last,—

It puzzles us somewhat to know precisely by what means Mr. W. E. H. Massey managed to snatch, under the very eyes of the *vigilantes* of the Chicago Exhibition, such a fine set of pictures as he has obtained, judging from such



THE WINDMILL EXHIBIT.



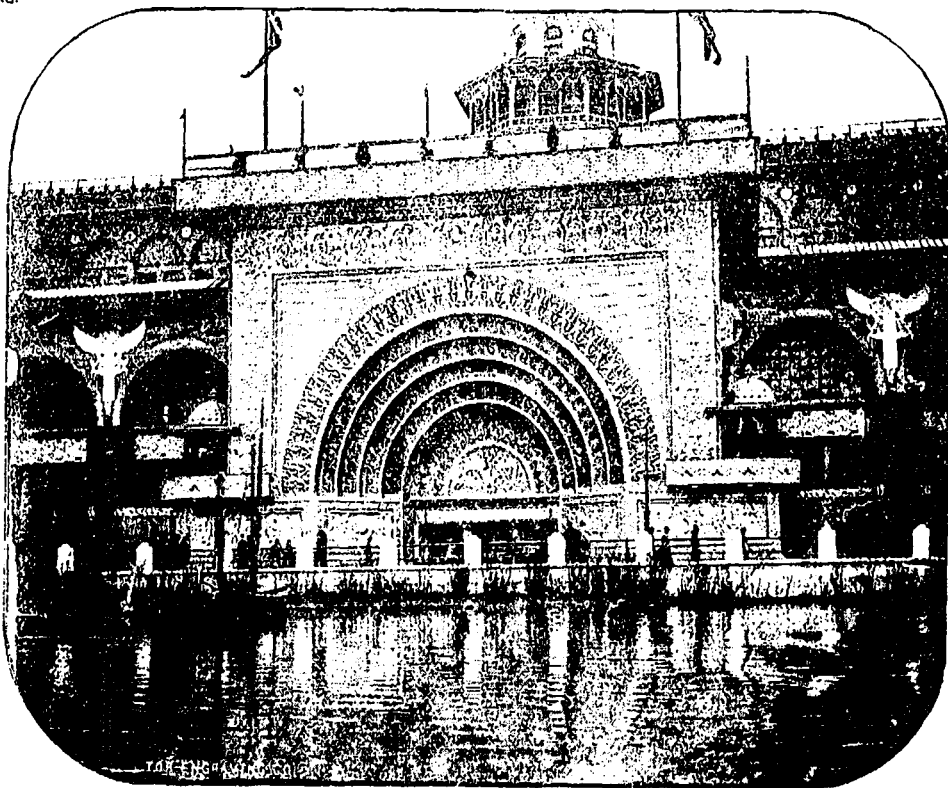
THE WOMAN'S BUILDING.

samples as have been given in the *Canadian Photographic Journal* [reproduced from MASSEY'S ILLUSTRATED]. The subjects are sharp, well selected, and fully exposed. The artist gives a graphic account of the petty harassments to which he was subjected by the agents of the *concessionaire*; but, as we read, he eventually circumvented them by the expedient of hiring a gondola, or an electric launch, and photographing therefrom while going, in some instances, at full speed past the respective subjects which he has so ably snap-shotted. "The magnificent buildings," he says, "have been grouped with the greatest care, and with the surrounding landscape—which is like a fairyland, beautified with artificial lakes and canals, the latter spanned here and there with handsome white bridges—combine to make up a veritable paradise."—*The British Journal of Photography*, Oct. 20th, 1893.

We have pleasure in presenting our readers with another budget of charming World's Fair views. On the front cover is a view of the handsome Administration Building as it appears when riding about the Grand Basin in a gondola or electric launch. The great Macmonnies' fountain somewhat hides the entrance in front of the building. A portion of this fountain in full play is shown in another illus-

tration, while the large gilded statue of the Republic standing on a shapely pedestal surrounded by water shows in another picture. This faces the Administration Building and stands at the opposite end of the "Court of Honor." On the previous page is a view of the great central entrance of the Manufactures Building. While this enormous building, covering some 36 acres of ground, is one of the largest ever erected, if not the largest, it is nevertheless architecturally fine, as may be imagined from this view of one entrance. This particular picture was taken from a gondola while passing through the canal.

Three very pretty water scenes appear on this page. One of the prettiest and most interesting features of the outdoor exhibits was the display of windmills. Our view of the Women's Building was taken from a distance looking across one of the lagoons. The magnificent entrance of the Transportation Building has received frequent notice from various writers as being one of the most beautiful samples of de-



MAGNIFICENT GOLDEN ENTRANCE TO THE TRANSPORTATION BUILDING.