

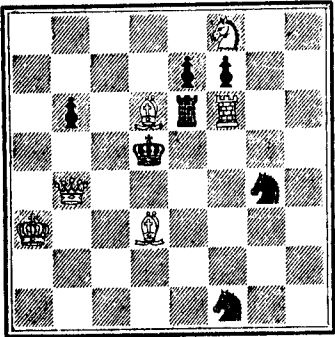
Chess.

All Correspondence intended for this Column, and Exchanges, should be directed to the CHESS EDITOR, CANADIAN SPECTATOR Office, 162 St. James Street, Montreal.

Montreal, October 23rd, 1880.

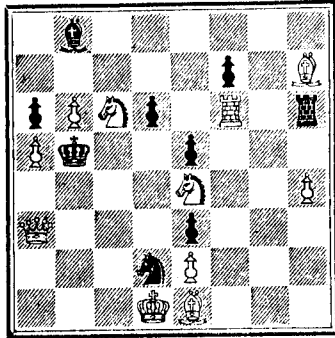
CANADIAN SPECTATOR PROBLEM TOURNEY.—FIRST PRIZE SET, which also takes the prizes for the best 2-mover and best 3-mover.

MOTTO: "Gemini." Author: Mr. W. Atkinson, Montreal.
BLACK.



WHITE.

White to play and mate in two moves.



WHITE.

White to play and mate in three moves.

SOLUTION TO PROBLEM No. 102. By Mr. W. Atkinson.

<i>White.</i>	<i>Black.</i>	<i>White.</i>	<i>Black.</i>	<i>White.</i>
1 Kt to K 6	P takes Kt	2 B to K 3	K to B 4	3 Kt to Q 5 mate
	If K to B 4	2 Kt to B 7	K to Kt 5	3 Kt to Kt 7 mate
	If P to Q 4	2 P to Kt 4	P takes P	3 B to Kt 7 mate

CHESS INTELLIGENCE.

THE "CANADIAN SPECTATOR" PROBLEM TOURNEY.

We have much pleasure in presenting to our readers the Report of Mr. C. A. Gilberg, the Judge selected to decide the merits of the various Problems submitted for competition in our Problem Tourney. Mr. Gilberg's labours in connection with the Book of the American Congress have been so arduous that he was obliged to avail himself of the kind services of Mr. E. B. Cook to examine some of the Problems, and the conclusions that Mr. Gilberg himself had arrived at. Competitors have therefore had the benefit of the judgment of both these gentlemen, than whom we doubt if any finer judges of Chess Problems can be found on this side of the Atlantic.

NEW YORK, October 13th, 1880.

To the Chess Editor of the CANADIAN SPECTATOR:

DEAR SIR,—An examination of the seventeen sets of problems entered for competition in your Tourney has disclosed faulty members in the seven sets bearing the following mottoes, viz. :—

- Set No. 3—"Fortis et Hospitatis."
- Set No. 4—"Now I will believe that there are unicorns."
- Set No. 5—"Muskoka."
- Set No. 7—"Problematic Characters."
- Set No. 9—"A Happy Thought."
- Set No. 13—"L'échec n'empêche pas le travail."
- Set No. 17—"Thrift, Thrift, Horatio."

The contest for the prizes offered for the best and second best sets is thus reduced to the remaining entries, which I shall briefly notice in the order of publication.

"The Amaranths."—No. 1 is elaborate, and nearly free from duals; but there is in it no discernible theme, and the structure has evidently been erected upon the system of providing a mating move for White in answer to any move at Black's command, and then an initial move added which requires the capture of an adverse piece that simply obstructs the machinery of the problem. After the key-move has been discovered few of the mating positions are interesting. No. 2 is somewhat more ambitious, and the leading variations are exceedingly good; but duals abound in all the subordinate branches.

"Orange Blossoms."—No. 1 contains but two weak defences, but the key-move is obvious at a glance, in consequence of the exposed situation of the White King. No. 2 is unattractive in its appearance, and offers but little difficulty in solution—the variation requiring White to play 2 Q to Q 8, possessing all the excellence of the problem.

"Strategy."—No. 1, though less elaborate than some of its rivals, is exceedingly neat and perfect in its machinery, and the key-move is not suggested by the arrangement of the forces employed in its construction. No. 2 contains in its main variation a very pretty piece of chess strategy, although the unnatural column of Black pawns may be regarded by some as a conflicting blemish in its construction.

"Gladstone."—Both problems are simple, and contain few interesting features. "Sic est vita."—The initial move of the two-move mate, ingeniously bestowing a masked support of the Queen's Bishop's Pawn, is well conceived; but in other respects the problem is barren. No. 2 of the set is neither attractive in construction or solution.

"Gynx's Baby" may be put into its little trundle bed with an affectionate "good-night." The key to the two-move position is neat, and the bold sacrifice of the Queen in its three-move companion is somewhat startling; but the after-play of both is of a rather ordinary character.

"Gemini."—In this set we meet with the unmistakable work of an artist. The construction is faultless; its opening moves are by no means conspicuous—that of the two move mate being remarkably well concealed,—and the after-play in both problems unfolds many sparkling features. The positions are natural and graceful and the intricate and elaborate solutions are commendably free from duals.

"Insuperabilis."—Neat and unpretending, these problems possess neither depth nor lustre to attract attention; and the two-move mate, especially, is not strikingly original.

"Ars est celare artem."—It can scarcely be granted that the author has been very successful in concealing his art in the construction of these problems. Both are readily penetrated; No. 1 is light and natural, but the key-move is obvious from the threatened mate by discovery upon the removal of the King's Bishop—a mere momentary glance sufficing to determine the square to which that piece must be played—and the sequel affords no variety in mating moves. No. 2 lacks the charm of natural grace, but the solution is somewhat more attractive than that of its companion.

"Sua cuique voluptas."—Both problems display constructive ability in the author, and the three-move mate is pleasing from the small force employed and the natural freedom of the pieces. The opening move is good, and not at all obvious; but the remainder is not difficult. The two-move mate is more artificial, and there are several objectionable duals in it that could have been easily avoided.

It is my judgment, based upon a careful consideration of the claims presented by the rival competitors, that the set bearing the motto "Gemini" is preëminently entitled to the First Prize; and that the problems contributed under the motto "Strategy" are deserving of the Second Prize. Competition for the second place seemed very close between three or four

sets, each of which presented some conspicuous merits; but the artistic finish and the strategic skill which so eminently characterize the set to which the award is made proved strong recommendations in its favour. "The Amaranths," "Orange Blossoms," "Sua cuique voluptas" and "Gynx's Baby," were prominent contestants for this prize, and are worthy of honourable mention.

Among the unsound sets several very excellent problems were unfortunately disqualified for competition for the set prizes, but the merits of the surviving members were fully considered in the examination of candidates for the prizes offered for the best individual problems in two and three moves, respectively. The set "Gemini" possesses, however, in my judgment, the two finest stratagems in the tourney; and with the honours of the first prize, I must accord to it the special prizes for the best two-move and the best three-move problem.

Respectfully yours,
Chas. A. Gilberg.

NOTE.—Next week we will publish the names of the authors of the various sets submitted for competition.

Ottawa River Navigation Company.



MAIL LINE DAY STEAMERS,
BETWEEN
MONTREAL AND OTTAWA.

Passengers for Ottawa and all intermediate ports take 7.15 a.m. train for Lachine to connect with steamer.

First-class Fare to Ottawa.....	\$2.50
Do. return do.....	4.00
Second-class Fare to Ottawa.....	1.50

For the CALEDONIA SPRINGS, Excursion Tickets at reduced rates.
Baggage checked through to all ports at Bonaventure Depot.

DAILY EXCURSION FROM THE CITY.

All Day Trip to Carillon and back (passing St. Anne's, Lake of Two Mountains, Oka, Como, Rigaud, North River, &c.) Nice Grove near the wharf at Carillon. Steamer remains there about one hour and a half. Returns to Montreal via Rapids, reaching the city at 6.30 p.m.
Fare for Round Trip from Montreal, \$1.25.
On Saturdays, fare \$1.

DOWN THE RAPIDS EVERY AFTERNOON

Take 5 p.m. train for Lachine. Fare for Round Trip, 50c.

Saturday Afternoon Excursions to St. Anne's.

Leave Bonaventure Depot by 2 p.m. train (or an earlier train) for St. Anne's, returning home by steamer "Prince of Wales" via Rapids.
Fare for Round Trip, 80c from Montreal.
Tickets at Company's Office, 13 Bonaventure street, or the Grand Trunk Railway Offices and Depot.

R. W. SHEPHERD, President.

HOPE FOR THE DEAF

Garmore's Artificial Ear Drums

RESTORE THE HEARING and perform the work of the Natural Drum. Remain in position without aid, and are not observable. All Conversation and even whispers heard distinctly. We refer to those using them. Send for descriptive circular. Address: **GARMORE & CO.,** 5, W. Corner 5th & Race Sts., Cincinnati, O.

SPERMATORINE

The new French Medicine cures Nervous Debility and all nervous complaints, resulting in Loss of Memory, Serious Impediments to Marriage, Great Depression, etc. 75c per box; three for \$2. Sold by druggists everywhere. Wholesale—LYMAN BROS. & CO., Toronto. Sent by mail, securely sealed, on receipt of price. Address Imperial Medicine Agency, Toronto.

FITS EPILEPSY, OR FALLING SICKNESS

Permanently cured—no humbug—by one month's usage of Dr. Goulard's Celebrated Infalible Fit Powders. To convince sufferers that these Powders will do all we claim for them we will send them by mail, post-paid, a free Trial box. As Dr. Goulard is the only physician that has ever made this disease a special study, and as to our knowledge thousands have been permanently cured by the use of these Powders, we will guarantee a permanent cure in every case, or refund all money expended.
Price, for large box, \$3, or four boxes for \$10, sent by mail to any part of the United States or Canada on receipt of price, or by express, C. O. D.

CONSUMPTION POSITIVELY CURED.

All sufferers from this disease that are anxious to be cured should try Dr. Kissaner's Celebrated Consumptive Powders. These Powders are the only preparation known that will cure Consumption and all diseases of the Throat and Lungs—indeed, so strong is our faith in them—and also to convince that they are no humbug—we will forward to every sufferer, by mail, post paid, a free Trial box.
We don't want your money until you are perfectly satisfied of their curative powers. If your life is worth saving, don't delay in giving these Powders a trial, as they will surely cure you.
Price, for large box, \$3, sent to any part of the United States or Canada, by mail, on receipt of price.
Address

ASH & ROBBINS,
360 Fulton St., Brooklyn, N.Y.

DENVER, COLORADO.

A GENTLEMAN, going to reside in Denver, Col., would represent a house on commission. Best of references and security, if required. Address this office. 27

Goltman's Tailoring House

424 NOTRE DAME STREET.

With a view to clearing my very large and choice Stock of SCOTCH, ENGLISH and CANADIAN TWEEDS, I will make a REDUCTION on all orders for cash during this month.

Gentlemen desiring a first-class Suit will do well to call and see for themselves.

HUNDREDS OF PATTERNS TO SELECT FROM.

BOYS' CLOTHING A SPECIALTY.

SUITS READY-MADE OR MADE TO ORDER.

S GOLTMAN, 424 NOTRE DAME STREET.

PAULL & SON,

ARCHITECTS, &c.,

No. 3 Trust & Loan Buildings,

TORONTO STREET,

TORONTO.

22

TENDERS WANTED.

To Shippers and Wharfingers.

The Credit Harbour Tolls and Warehouses to let for one year or a term of years. The harbour is one of the best on Lake Ontario, and offers unprecedented advantages to speculators. Immediate possession. All particulars and necessary information given by applying personally or by letter to

PAULL & SON,

No. 3 Trust & Loan Buildings,

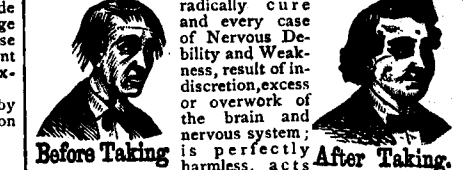
TORONTO STREET,

TORONTO.

33

GRAY'S SPECIFIC MEDICINE, THE GREAT ENGLISH REMEDY.

TRADE MARK. Will promptly and TRADE MARK.



radically cure and every case of Nervous Debility and Weakness, result of indiscretion, excess or overwork of the brain and nervous system; is perfectly harmless, acts like magic and has been extensively used for over thirty years with great success. Full particulars in our pamphlet, which we desire to send free by mail to every one. The Specific Medicine is sold by all druggists at \$1 per package, or six packages for \$5, or will be sent free by mail on receipt of the money by addressing THE GRAY MEDICINE CO., TORONTO, ONT., CANADA. Sold by all wholesale and retail druggists in Canada and the United States.

George Brush,

Manufacturer of
STEAM ENGINES, STEAM BOILERS, AND
ALL KINDS OF MACHINERY.

Eagle Foundry—34 KING STREET, MONTREAL.