

Always Investigate Quality

when considering the qualifications necessary in a motor for a given class of work.

The Westinghouse Type S Motor qualities which tell in machine-tool drive are:

Rigid construction—heavy shafts—split and interchangeable bearings, with two oil rings in each. Bearings may be removed for replacement without disturbing pulley. Shunted brush-holder and perfect brush-holder adjustment. Water and oil proof field coils.

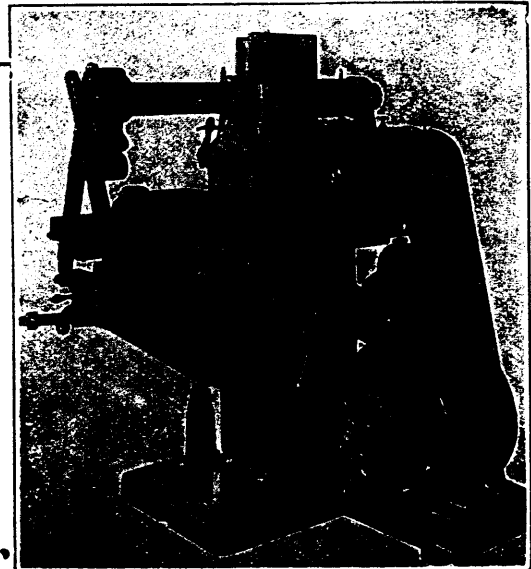
Canadian Westinghouse Co., Limited

General Office and Works, HAMILTON, ONTARIO.

Lawlor Bldg., King and Yonge Sts.,
TORONTO.
152 Hasting Street,
VANCOUVER.

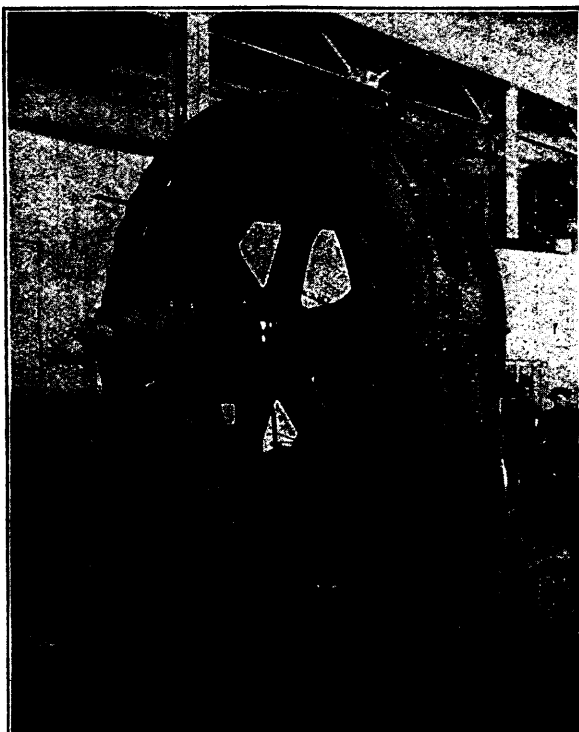
For particulars address nearest office:
HAMILTON.
922-923 Union Bank Bldg.,
WINNIPEG.

Sovereign Bank of Canada Bldg.,
MONTREAL.
134 Granville Street,
HALIFAX.



Type S Motor Driving Cincinnati Milling Machine

ALLIS - CHALMERS - BULLOCK LIMITED



800 h.p. Induction Motor under construction for the Ogilvie Flour Mills Co., Limited, Fort William.

“Allis-Chalmers” Mining, Saw Mill and Flour Mill Machinery, Engines, Pumps and Turbines.

“Bullock” Electrical Apparatus.

“Lidgerwood” Hoisting Engines.

“Ingersoll” Air Compressors, Rock Drills and Coal Cutters.

Head Office and Works
MONTREAL

District Offices

TORONTO	-	MCKINNON BUILDING.
WINNIPEG	-	CANADA LIFE BUILDING.
NELSON	-	JOSEPHINE ST.
MONTREAL	-	SOVEREIGN BANK BUILDING.
VANCOUVER	-	416 SEYMOUR ST.
NEW GLASGOW	-	N.S. TELEPHONE BUILDING.