

of benefit to the whole community, and it is clearly the duty of the government to make provision for this department of scientific work. If the scientific experiments are made under the auspices of the government the commercial enterprise of the individual will prompt him to apply the knowledge so gained to investigations for his own immediate benefit. The rich province of Ontario has been receiving for many years about \$1,000,000 per year from timber dues, but has expended only a few thousand dollars of all this money on the science of forest production and not one dollar on the economic manufacture and use of wood products. The methods adopted and the results obtained by the United States Division of Forestry were described, and reference was made to a series of tests on white pine beams, made in the School of Practical Science, the results of which indicated that if the strength is high the fracture on the tension side of the beam will be stringy and fibrous, but if the strength

is low the fracture will be short and brashy. This suggests the simple method of judging the quality of white pine by breaking a small stick across the knee.

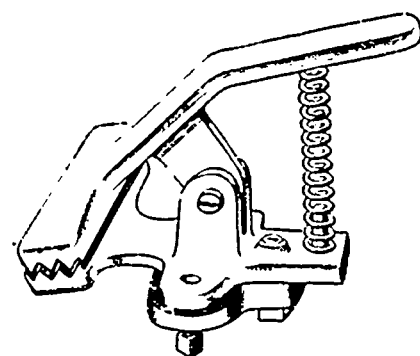
At the conclusion of the paper lantern illustrations were given, showing the methods of testing timber and the operations of rafting, river-driving and logging, interspersed with forest scenery.

The meeting emphasized the necessity of the government undertaking the scientific investigations essential to the better development of our Canadian resources.

LOWNES' BED CLOTHES CLAMPS.

The accompanying illustration is of L. M. Lownes' patent bed clothes clamp, recently patented in Canada. The device, as shown, is of such simple construction as to require no detailed description. It can be adjusted to the rail of any style of bedstead or child's crib. It is durable and inexpensive. It

has a sure grip and cannot become dislodged or detached from the bedclothes. For adults, place four on a bed, near the head and near the foot, each side. For children's



bed or crib, one on each side near the head. Being on the under side of the rail it does not interfere with anything, and is not in the way. It is specially useful in hospitals and asylums when patients are inclined to be restless; and it is invaluable when there are small children who are often made sick by having the bed covering kicked off. For further information enquire of L. M. Lownes, Norristown, Penn.

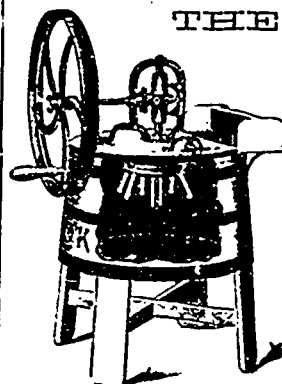
In the High Court of Justice.

QUEEN'S BENCH DIVISION.

MR. JUSTICE BRUCE.--Wilson Brothers Bobbin Co., Limited, and Herbert William Wilson v. Wilson & Co., Barnsley, Limited, Saturday, January 27th, 1900. A PERPETUAL INJUNCTION was this day granted against the Defendants, restraining them, their servants and agents, from infringing the Letters Patent No. 5559, of the year 1895, for "Improvements in means for strengthening and protecting tubes and bobbins used in the preparation and spinning of fibrous materials." And it was ordered that the Defendants should pay to the Plaintiffs damages, to be ascertained on enquiry, and costs. The Judge also certified to the validity of the Plaintiffs' patent.

The above has reference to the Patent CORNHOLME Shield, with "beaded" or "rolled" edge, for fastening.

THE O. K. ROTARY WASHER



Has revolving steel ball gearing, making it almost noiseless; thus superior to others. Wheel continuous one direction, the stirrer in both directions. Lid closes tight. No escape of steam.

WORKED BY HAND OR BELT.

(Patented in Canada June 13, 1899.)

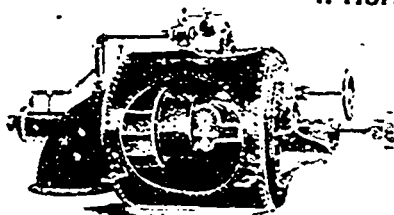
Want reliable party to manufacture on royalty, or will sell patent. Factory in U.S. sells nearly 1,000 per month.

Full particulars upon receipt of inquiry.

OTTO CLAUSEN, - - Davenport, Ia

THE Crocker Patent Turbine

n Horizontal Setting, with Quarter Turn Elbow.



Where the nature of the location will permit its use this type has many advantages. It is very suitable for direct connection to dynamos, and many are in operation in this class of service.

Notice how complete and compact this arrangement is, and how easily it may be installed. Can you use anything of this kind? Your inquiries will receive prompt attention.

WATER POWERS examined and Reports made. Estimates submitted for Complete Equipments.

The JENCKES MACHINE CO.,
42 Lansdowne St., Sherbrooke, Que.

When writing to Advertisers kindly mention THE CANADIAN MANUFACTURER.