

provided with adjustable pan seats composed of double armed brackets having one arm pivoted to one wall of the oven and the other arm swinging adjacent to the adjoining oven wall or out therefrom to position to support the pan, substantially as set forth.

11th. In a cooking apparatus, the oven provided upon its bottom with L-shaped seats, one arm of the seat being pivoted to the bottom and the other arm movable to a position adjacent to the side wall or out therefrom, substantially as set forth.

12th. In a cooking apparatus, the oven provided internally with pan seats arranged near its top and composed of L-shaped brackets having their vertical arms pivoted horizontally to the side of the oven and their horizontal arms swinging up against the oven top or down to form horizontal seats on which to rest the pads, all substantially as and for the purpose set forth.

13th. In a cooking apparatus the oven provided with the pan supports adjustable to position to support the pans or out of the way to increase the storage space in the oven and the stove composed of separate sections adapted when detached to be stored in the oven, substantially as and for the purpose set forth.

14th. In a portable cooking apparatus, a stove composed of side pieces having longitudinal seats arranged one above the other, the grate engaging the upper seats, the ash pan engaging the lower seats and the end pieces, substantially as set forth.

15th. In a portable cooking apparatus, the stove composed of the sides provided with longitudinal strips, the opposite edges of which are bent forming seats, the grate having depending flanges engaging the upper seats, the ash pan resting upon the lower seats and the end, substantially as set forth.

16th. A stove having separable sides and a door hinged to one side and provided with a spring catch engaging the other side, substantially as described.

17th. In a cooking apparatus, the combination with the oven having downwardly opening seats or sockets at its lower edge and the stove having its sides and end portion provided with dowel like projections entering said seats and the bottom engaging said sides and end pieces, substantially as set forth.

18th. In a portable cooking apparatus the combination with the outer shell and inner casing, of the separating pieces secured to one of such parts and having projecting spring ends substantially as set forth.

19th. The combination with the outer shell and inner casing of the bolt and a seat or seats therefor on the shell said bolt and seat having openings adapted for the passage of the padlock shackle whereby to lock the part together substantially as shown and described.

20th. The combination of the outer shell having hook like lugs one of which is provided with perforations, the inner casing fitted in said shell and the bolt supported on said shell and having flanges movable into engagement with the hook like lugs, one of said flanges having a perforation movable into coincidence with those of the hook like lug, substantially as shown and described.

21st. The combination of the outer shell having bolt seats, the inner casing, the bolt turning into engagement with the bolt seats and the lock by which to secure the bolt to the seats, substantially as set forth.

22nd. The combination with the top plate having an opening provided with a notch of the stove-pipe having flanges to fit above and below the top plate the lower flanges being movable through the notch in opening, all substantially as shown and described.

23rd. In a cooking apparatus the stove having separable sides and a detachable top formed in sections having flanges lapping along the outer faces of the sides and seats fitting along the inner faces of said sides, substantially as set forth.

24th. In a cooking apparatus the stove having separable sides and a back provided with end flanges to fit outside of and with seats to fit inside the rear ends of said sides, substantially as set forth.

No. 52,120. Safety Blank Cheque, Draft, etc.

(Chèque, mandat, etc.)

Net Over \$1000

Net Over \$500

Net Over \$200

Net Over \$100

Net Over \$50

Net Over \$20

Net Over \$10

Net Over \$5

Net Over \$2

Net Over \$1

Net Over \$0.50

Net Over \$0.25

Net Over \$0.10

Net Over \$0.05

Net Over \$0.01

Net Over \$0.00

Pay to the Order of

San Francisco

\$

Dollars

On the 17th day of February 1896

New York

THE LONDON & SAN FRANCISCO BANK

52/29

Marion Leventritt, San Francisco, California, U.S.A., 28th April, 1896; 6 years. (Filed 17th February, 1896.)

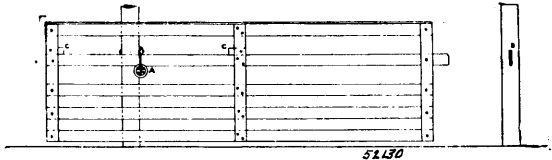
Claim.—1st. A blank cheque draft or similar instrument having a body-portion of a standard length in inches or other units of linear measurement, the number of said units determining the highest limit of the sum expressed in the body of the instrument; combined with coupons of a fixed and standard width which is a fraction of the unit of measurement attached to and integral with the said body-portion, each fraction of unit so added to the length of the body-portion by a coupon and made to form a part thereof being arranged to raise the limit expressed by the length of the body-portion alone by a predetermined amount, as shown and described.

2nd. A blank cheque draft or other instrument comprising in its structure the three elements of a standard length of body-portion, a standard width of coupon on the end of such body-portion and

integral therewith, said measurements being predetermined units of linear measurements and fractions thereof, and a standard tint or colour for the body-portion and coupon, as shown and described.

No. 52,130. Gate Hinge.

(Penture de barrières.)

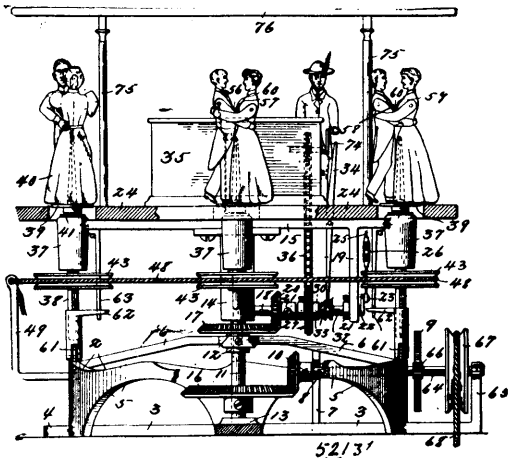


John Askew, Leamington, Ontario, Canada, 28th April, 1896; 6 years. (Filed 11th February, 1896.)

A gate hinge comprising a bracket firmly secured to a post to form a holder; a swivel pin carried by said holder; a pulley strap carried by the swivel pin; and pulley, in the pulley strap, over which a bar of the gate runs, substantially as and for the purpose hereinbefore set forth.

No. 52,131. Display Apparatus.

(Appareil d'étalage.)



Frederick W. G. Boettcher, Duluth, Minnesota, U.S.A., 28th April, 1896; 6 years. (Filed 3rd March, 1896.)

Claim.—1st. In a display apparatus, the combination of a revolving platform, means for revolving the same, a spindle carried by the platform and having a rotary movement about its own axis independent of the platform, said spindle having a vertical movement, a doll carried by said spindle, and means for imparting the respective movements to the spindle and the doll, carried thereby, substantially as described.

2nd. In a display apparatus, the combination of a revolving platform, gearing for revolving the same, spindles loosely mounted in said platform, dolls mounted on said spindles, means for imparting vertical movement to said spindles, and a stationary cord arranged to engage a portion of said spindles and thereby rotate said spindles and dolls, substantially as described.

3rd. In a display apparatus, the combination of a revolving platform, gearing for revolving the same, doll carrying spindles loosely mounted in said platform, shafts carrying cams and gears and mounted on the movable platform and imparting a vertical movement to the said spindles, a stationary gear meshing with the gears on the said shafts, and a stationary cord engaging a portion of said spindles for imparting a rotary movement to the same, substantially as described.

4th. In a display apparatus, the combination of a revolving platform, means for revolving the same, doll-carrying spindles mounted in the sleeves in said platform so as to have a vertical but no lateral movement independent of said sleeves, means for rotating said sleeves and means for imparting vertical movement to the said spindles and the dolls carried thereby, substantially as described.

5th. In a display apparatus, the combination of a movable platform, means for revolving the same, dancing dolls mounted on said platform and having movable arms and legs and devices for operating said arms and legs upon the movement of the platform, substantially as described.

6th. In a display apparatus, the combination of a movable platform, doll carrying spindles loosely mounted in said platform and adapted to be reciprocated up and down upon the revolution of the same, dolls mounted on said spindles and having movable arms and legs, and means for moving said arms and legs as the platform revolves, substantially as described.

7th. In a display apparatus, the combination of a movable platform, gearing for revolving the same, dolls mounted on said platform and having movable arms and legs, and means for moving said arms and legs upon the revolution of the platform, substantially