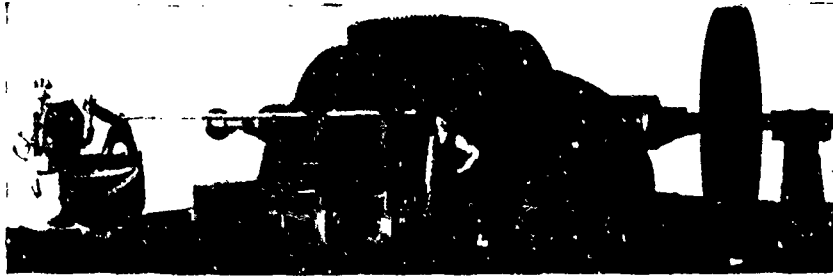


MCCORMICK TURBINES

State your
Requirements
and
send for
Catalogue



Estimates
Furnished for
Complete
Power Plants,
and Results
Guaranteed

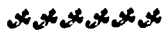
Represents a pair of 30-inch McCormick Turbines, with Governor and Fly-Wheel for regulating speed. The Turbine Shaft is direct-connected to a 750 K.W. Generator.

Four Outfits like this, developing 3,000 h.p., and one pair of 51 inch of 1,150 h.p., furnished the Sacramento Electric, Gas & Railway Co., Colusa, Cal. Power is transmitted 21 miles.

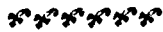
S. MORGAN SMITH CO. - YORK, PA., U.S.A.

...JUST PUBLISHED...

THE
CANADIAN
HAND-BOOK
OF
STEAM
AND
ELECTRICITY



By
William
Thompson.



170 Pages—Illustrated
In Strong Cloth Binding

The preparatory chapters are devoted to a concise explanation of the foundation principles of mathematics, a knowledge of which is absolutely essential to the study of Electricity and Engineering. In the succeeding chapters the student is led by gradual stages to a more complete acquaintance with these subjects and is equipped with knowledge sufficient to enable him to pursue his researches to any further extent.

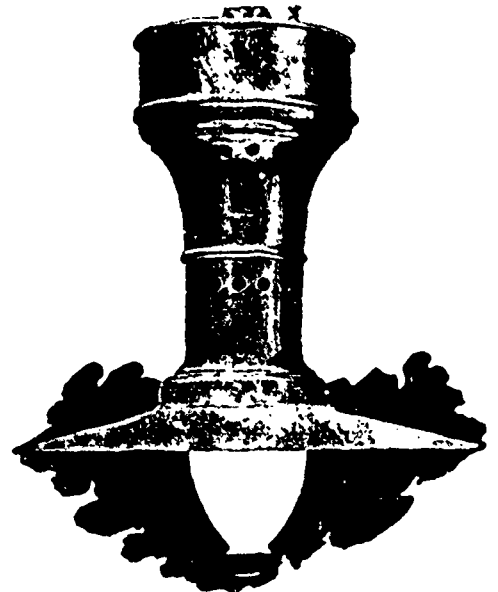
Price - 50 Cents

The C. H. MORTIMER PUBLISHING CO.
of Toronto, Limited
Publishers,
TORONTO - CANADA

LIHTAN ARC LAMP

FOR ALL CIRCUITS

- Constant Potential.
- Constant Current.
- Alternating.
- Railway.
- Power.
- 220 Volts.
- Write for Catalogue.



Our Alternating and Series Lamps have a fixed contact on end of Carbon and do not depend on sliding contacts which burn off in a night.

THE SAFFORD ARC LAMP MFG. CO.
BUFFALO, N.Y.

Mill Men and Machinery Men

SHOULD SEE

**THE GOLDIE & McCULLOCH CO.'S
LIMITED, GALT, ONT.**

Display at the Toronto Exhibition
of Steam Engines, Gas Engines,
Gyrators, Wood-working Machinery,
Mill Machinery, Etc.
Write us in the meantime.

THE GOLDIE & McCULLOCH CO., LIMITED
GALT, ONT.

WE MAKE

- Wheelock Engines
- Ideal Engines
- Gas and Gasoline Engines
- Boilers
- Pumps
- Water-Wheels
- Flour Mill Machinery
- Oatmeal Mill Machinery
- Oatmeal Steam Kilns.
- Wood-Working Machinery
- Iron Pulleys
- Wood Rim Split Pulleys
- Shafting
- Hangers
- Gearing
- Friction Clutch Pulleys, Etc.
- Safes
- Vaults and Vault Doors

WE MAKE

- Wheelock Engines
- Ideal Engines
- Gas and Gasoline Engines
- Boilers
- Pumps
- Water-Wheels
- Flour Mill Machinery
- Oatmeal Mill Machinery
- Oatmeal Steam Kilns
- Wood-Working Machinery
- Iron Pulleys
- Wood Rim Split Pulleys
- Shafting
- Hangers
- Gearing
- Friction Clutch Pulleys, Etc.
- Safes
- Vaults and Vault Doors