

Stock.

A Model Steer.

By the kindness of Mr. Mills, President of the Ontario Agricultural College, we are able to present to our readers cuts Nos. 1, 2 and 3 (which show the parts of a bullock), and give the name of each; also a scale of points. When that part of an animal under consideration is perfect, it is given the full number of points; if not perfect a proportionate number is assigned. By a careful study of these points farmers can more intelligently judge the beasts which come under their notice; and we have no doubt that many of the judges at our shows would be much benefited by a like study. We believe our agricultural fairs will not

our shows is that the judges shall make reports on all classes with which they have to do, and when they think necessary, make such recommendations as they deem would be of benefit to the public, the association or exhibitors. As the matter now rests, to one not present little advantage is to be gained by simply reading "Mr. So-and-So took the first prize in such a class," &c. No other facts are given. The public thus lose a great deal of information which justly belongs to them, and from which they would derive a great benefit.

TABLE OF PARTS.

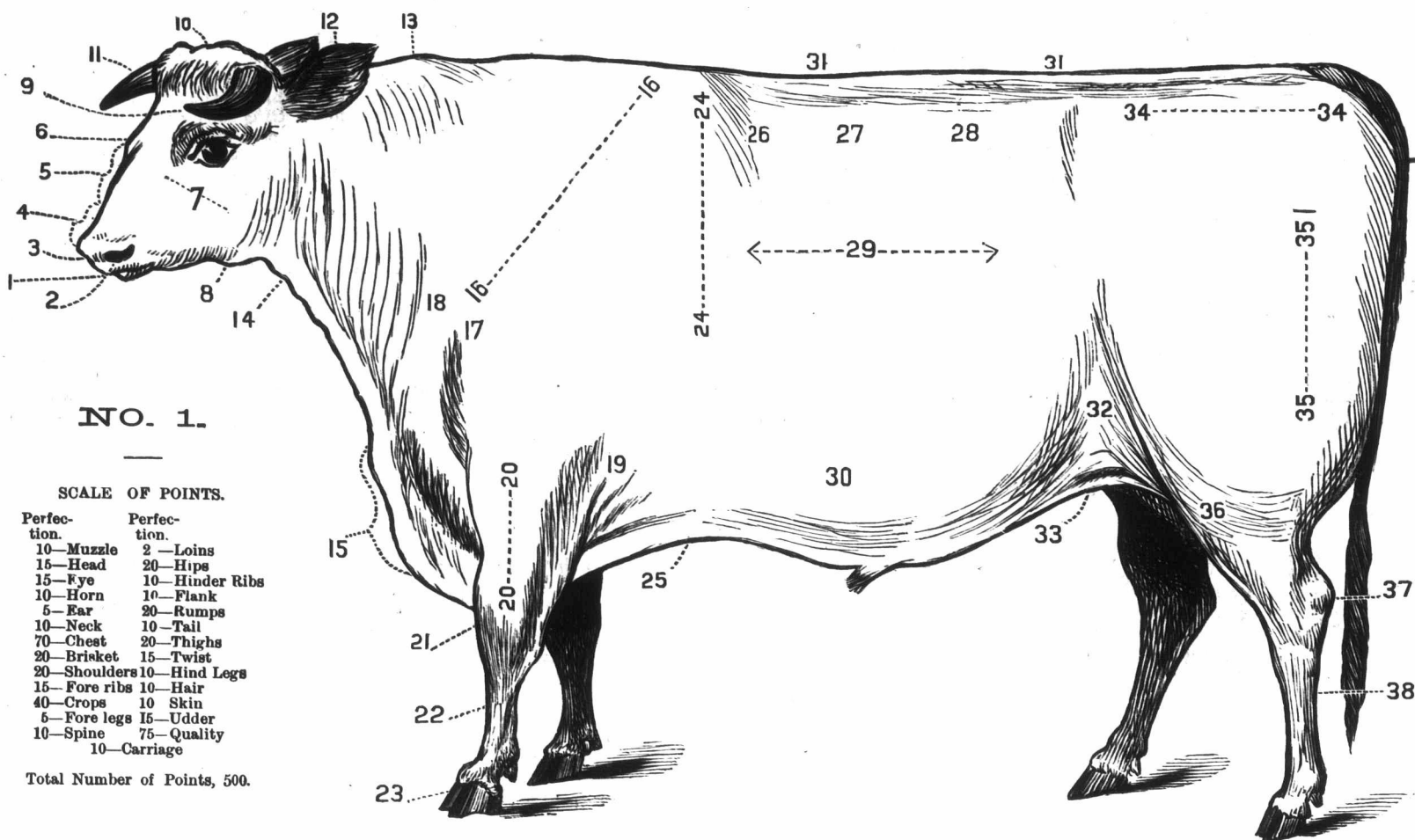
1. Mouth.	25. Fore Flank.
2. Nostrils.	26. Fore Ribs.
3. Lips.	27. Mid Ribs.
4. Muzzle.	28. Hinder Ribs.

Good Stock and Good Feed.

The Maritime Farmer, in speaking of the importation of thoroughbred stock by the Agricultural Society of New Brunswick, writes as follows of the necessity of good feeding for stock of good quality:

Importations of thoroughbred stock, and improved system of feeding, have not been without their effect. In this Province there have been and there are intelligent and progressive farmers who take a pride in their calling, and who will not if they can help it be behind the farmers anywhere. But good stock and good feed here are confined to a few localities. What is wanted in the Province (to confine ourselves to our own bounds) is a general transfusion of pure blood throughout it, and a more liberal system of feeding (shorts, corn, cotton seed meal, etc.) in winter.

Good stock and good feed are necessary adjuncts. Without good feed the best stock will grow poor and degenerate. It is, in fact, waste and cruelty



A MODEL STEER, WITH PARTS NAMED (AS TAUGHT AT THE ONTARIO EXPERIMENTAL FARM).

give the best results possible until all judging is done by using a scale of points. This opinion is held by nearly all leading agricultural authorities. Any thoughtful man can readily see the great advantages to be derived from such a course. Young and old would soon learn by this means the proper proportions of a model animal, and would thus be able to select their breeding animals more advantageously. Often when attending the fairs we hear complaints by exhibitors that justice has not been done. If a well established scale of points were used in all classes of live stock, and in all departments where possible, these grievances could be easily settled and satisfaction given to all. As it is now "best" has too many meanings, one committee-man putting more value on one point than another; thus where all desire to do their duty mistakes are made. When men are allowed to judge animals without any official guidance, partiality is more easily shown, but when each part of an animal is valued at a certain number of points, it is difficult to make a poor animal come out first.

Another thing we would strongly recommend at

5. Face.	29. Barrel.
6. Eyes.	30. Belly.
7. Cheeks.	31. Spine.
8. Jaws.	32. Flank.
9. Forehead.	33. Plates.
10. Poll.	34. Rumps.
11. Horns.	35. Hips.
12. Ears.	36. Thighs.
13. Neck.	37. Hocks.
14. Throat.	38. Hind Leg.
15. Dewlap.	39. Brisket.
16. Shoulders.	40. Bosom.
17. Shoulder Point.	41. Chest.
18. Shoulder Vein.	42. Loin.
19. Elbows.	43. Hooks.
20. Arm.	44. Purse.
21. Knees.	45. Twist.
22. Shanks.	46. Pin Bones.
23. Hoofs.	47. Tail Head.
24. Crops.	48. Tail.

Our new premium list appears in another column, and will be found liberal and attractive.

One good, active person in each township can make money, do good to themselves, their neighbors and to us, by making a thorough canvass for new subscribers. A most liberal offer will be made this year. Send for particulars.

to give fine animals to the care of farmers who are too penurious or careless to attend to or keep them up to their proper condition with generous feeding. Even the common cattle will thrive and repay their keepers in beef and milk when well attended to. The establishment of the stock farm, and the importation of a number of cattle of the best breeds, are steps in advance towards supplying the Province with good stock. If the selection of stock is carefully made (as we do not doubt it will be) and if the farm is properly managed, and the pure bred stock kept in it are kept for the purpose of improving the common run of stock about the district, and of creating the nucleus of herds of superior cattle to be sold to farmers in all parts of the Province, and if those of the imported animals not wanted for the farm, are sold to farmers who will know how to use them well, a step will be taken towards supplying New Brunswick with good stock. Pure bred stock is the fountain from which we must ever draw the leaven with which to leaven the common stock of the Province. But, to keep up good stock throughout the Province, care must be taken that it be well fed and well tended. Many farmers have much to learn in the way of taking care of cattle, and to give them fine cattle before they perceive the necessity of good feed and care to keep them up to their original mark, would be cruelty to the animals and of no benefit to themselves.