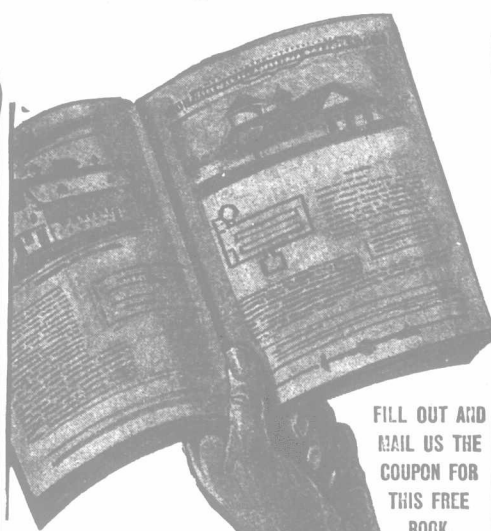


# LOUDEN BARN EQUIPMENT

FOR QUALITY

FOR SERVICE

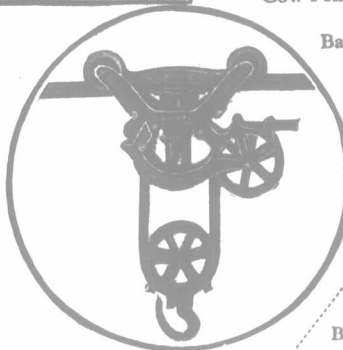
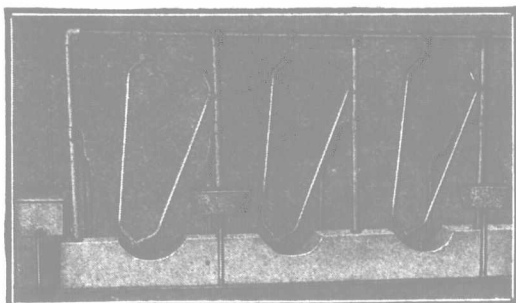
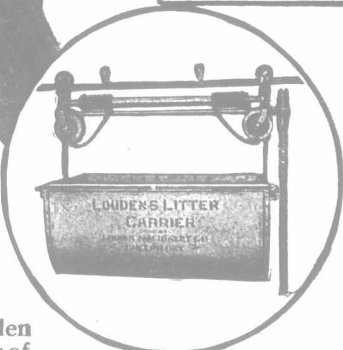
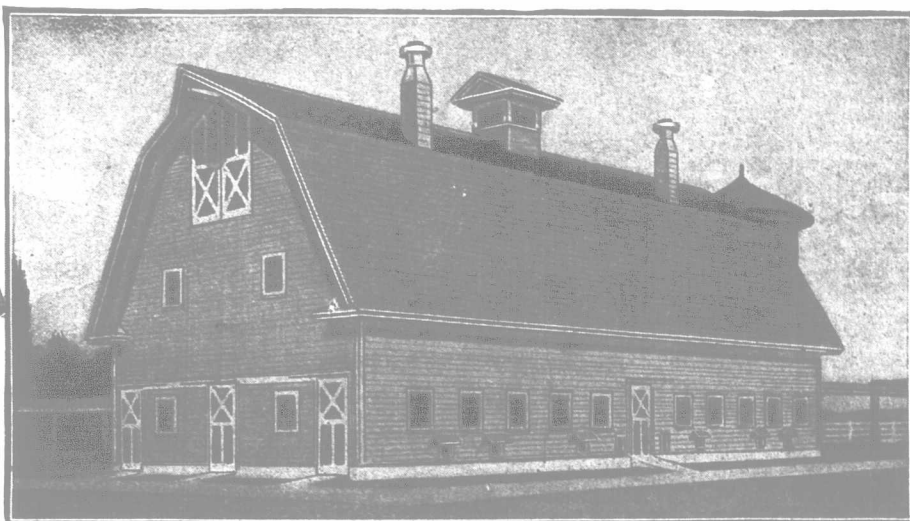
FOR SECURITY



## Book of Barn Plans Free

Louden "Barn Plans" is not a catalogue of barn equipment. It is a complete and valuable book of reference and instruction on barn construction. The 112 pages of Louden Barn plans is full of dollar saving information—the best of ideas gathered by the Louden Company during many years of barn building, and barn equipment experience. 51 representative designs for cow barns, horse barns, general purpose barns and hog houses. In addition, there are 32 pages devoted to general construction problems, such as concrete work, laying floors, roof construction, ventilation, etc.

FILL OUT AND  
MAIL US THE  
COUPON FOR  
THIS FREE  
BOOK.



## LOUDEN MACHINERY CO.

112 CRIMEA ST., GUELPH, ONT.

VANCOUVER, B.C. WINNIPEG, MAN. ST. JOHN, N.B.

Louden equipment makes possible a clean, sanitary barn with a minimum of expense for upkeep. When cows are transferred from dark, dirty barns to Louden barns, the milk flow often increases from 15 to 25 per cent. and the labour of caring for the herd is reduced from one-third to one-half.

The cost of installing Louden equipment is surprisingly small, and is just as great an economy for the man with a half dozen animals as for a man with a hundred. The percentage of labour saved is the same.

### The Louden Line includes:

Litter Carriers, Hay Carriers,  
Feed Carriers, Cow Stalls,  
Horse Stalls, Water Basins,  
Cow Pens, Bull Pens,  
Hog Pens,  
Barn Door Hangers.

Catalogues Free

Please send me  
copy of  
Louden  
Barn Plans. I  
expect to build  
(or remodel)  
barn for

..... cows  
and ..... horses.

Barn will be about  
x ft.

Name.....

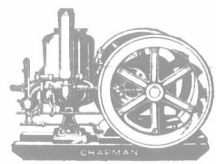
\* P.O. ....

Prov.....

## "Barn Chores a Quick Job—Easy Work"

This is the best time to figure on complete barn equipment to save labor. It may be impossible to get hired men in the future. Our latest improved equipment of feed and litter carriers, pumping systems, water basins, etc., will take their place. Many a farmer has found hired men unnecessary where he had the O. W. E. & P. Co.'s labor-abolishing, barn equipment. Ask for descriptive catalogue.

The two principal reasons why installing Barn Equipment PAYS are—the comfort and sanitation for the cattle, and the thoroughness and speed with which the equipment enables one man to do a lot of work. Most of the chores like pumping, grinding, sawing, cutting, and turning of all kinds, require a Gasoline Engine. Write for descriptive catalogue of the "Chapman" and "Toronto" Engines.

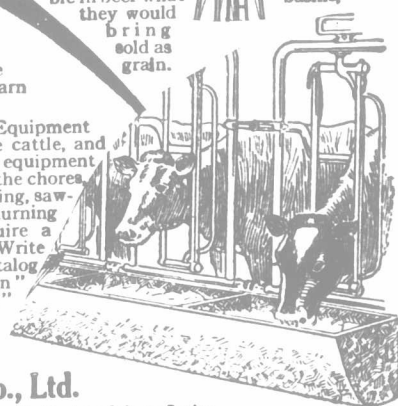


**Ontario Wind Engine & Pump Co., Ltd.**  
93 Atlantic Ave., TORONTO

Branches—Montreal, Winnipeg, Calgary, Regina.



The Toronto Windmill runs in a lighter breeze than any ordinary windmill. It will do your pumping day and night. We can supply you with a complete water supply outfit, including air motor, tank, force pump, water basin.



## PEERLESS LAWN FENCING

### Enhances Property Values

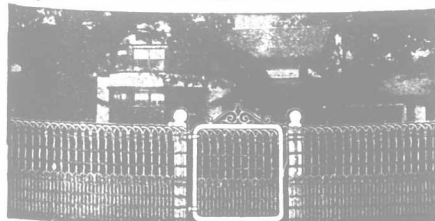
A BEAUTIFUL lawn fence gives any piece of property that symmetrical, pleasing, orderly appearance that not only affords its owner a keen sense of pleasure and satisfaction while occupying the premises, but when offered for sale, it brings a better price. It's an investment—not an expense.

### Peerless Ornamental Fencing

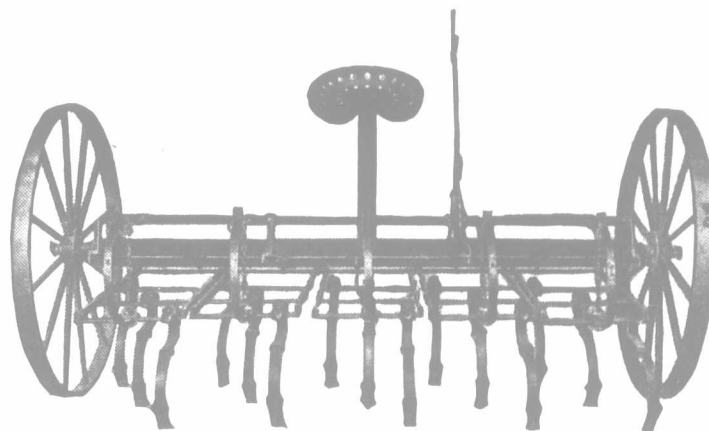
is made of strong, stiff, galvanized wire that will not sag. In addition to galvanizing, every strand is given a coating of zinc enamel paint, thus forming the best possible insurance against rust. Peerless Ornamental Fence is made in several styles. It's easy to erect and holds its shape for years.

Send for free catalogue. If interested, ask about our farm and poultry fencing. Agents nearly everywhere. Agents wanted in open territory.

**The Banwell-Hoxie Wire Fence Co., Ltd.**  
Winnipeg, Man. Hamilton, Ont.



## International No. 2 Cultivator



This most useful and profitable implement—the International No. 2 Cultivator—will do good work on your farm. It serves the double purpose of cultivating your soil and thoroughly ridding the ground of weeds. For forming a mulch of dirt to conserve moisture, for keeping down obnoxious weeds, for summer fallowing, you could not own a more economical implement.

The main frame of the International No. 2 is of angle steel, more than strong enough to keep the teeth at their work in all conditions of ground. The teeth follow the unevenness of ground, being independent of each other. They cannot twist out of position, and strong springs protect them. One easy-working lever and rock shaft controls the cultivator. Note the steel wheels and axles—only the International has them.

Either spring or stiff teeth are furnished. At little added cost you can have both sets, giving you a splendid outfit for all-round use. The stiff teeth cut the whole surface of the ground. They are excellent in getting rid of thistles and woody-stalk weeds. The spring teeth points are reversible, giving double wear. The cultivator can be equipped with grain and grass seeding boxes.

See the agent who sells the International No. 2.  
Write the nearest branch house for catalogues.

## International Harvester Co. of Canada, Ltd.

### BRANCH HOUSES:

At Brandon, Calgary, Edmonton, Estevan, Hamilton, Lethbridge, London, Montreal, N. Battleford, Ottawa, Quebec, Regina, Saskatoon, St. John, Winnipeg, Yorkton

When Writing Advertisers, Please Mention "The Farmer's Advocate"