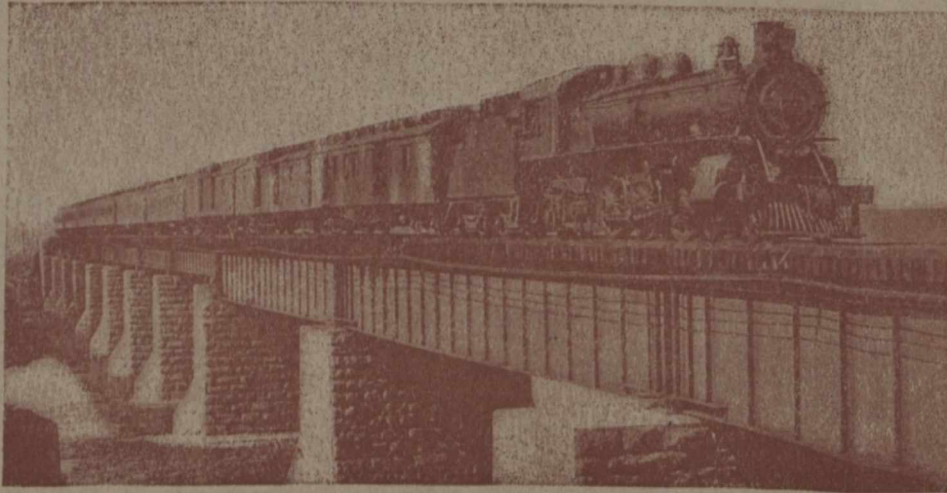


CANADIAN PACIFIC



THE EMPIRE'S GREATEST HIGHWAY

OPERATING OVER 18,000 MILES OF RAILWAY, the Canadian Pacific has the most complete and far-reaching service, not only in Canada itself, but also for the United States of America and Alaska.

FLEETS OF PALATIAL MODERN STEAMERS on Atlantic and Pacific (Managers and Agents:—Canadian Pacific Ocean Services, Ltd.) connecting Canada with Europe, Asia and Australasia.

CANADIAN PACIFIC HOTELS are to be found in the chief commercial and tourist centres.

LANDS IN WESTERN CANADA AND BRITISH COLUMBIA for sale at moderate prices.

MONEY ORDERS issued and **PARCELS** forwarded by Dominion Express to Canada and U.S.A.

THROUGH TICKETS AT LOWEST RATES to all points in **CANADA, UNITED STATES, ALASKA, JAPAN, MANILA, CHINA, NEW ZEALAND, AUSTRALIA**, and **ROUND the WORLD. FAST FREIGHT SERVICES** from Europe to the rich markets of the New World.—**SHIP YOUR GOODS VIA C.P.R.** Apply—

CANADIAN PACIFIC RAILWAY,

62-65, Charing Cross, S.W. 1; 67-68, King William Street, LONDON, E.C. 4.

6, Water Street, LIVERPOOL;

1, Mount Street, MANCHESTER;

4, Victoria Square, BIRMINGHAM;

18, St. Augustine's Parade, BRISTOL;

120, St. Vincent Street, GLASGOW;

41, Victoria Street, BELFAST,

or Local Agents everywhere.

CANADIAN EXPEDITIONARY FORCE.

The Canadian Pacific Railway issues for members of the Canadian Expeditionary Force and Canadians in the Imperial Army or Navy visiting Canada on leave

RETURN TICKETS AT SINGLE FARE

good for ninety days, from Canadian ports of landing to destinations in Canada.

Such tickets should be purchased from Canadian Pacific Railway Offices or Agents in Europe.

For wives and families tickets can be issued at special fares, available only for passengers from Europe. Apply as above.