



## If you have not yet visited the display of New Spring Millinery AT THE ROSE STORE

a real treat awaits you! Hundreds of ladies have visited us in the last few days and their many words of approval was substantiated by the purchases made.

New models are being added every day. We invite you to come. OPENINGS ARE STILL ON. The entire 2nd floor devoted to hats and lovely trimmed hats. Ready trimmed street hats for ladies, misses and children a special feature.

The prices will more than please.

### SPECIAL FEATURE 1ST FLOOR

#### LISLE ROSE

Extra fine quality in Black, Tan, Brown, Grey, White, all sizes worth 85c, at ..... 69c

#### NEW SILK WASTS

A special assortment of the very newest waists in heavy silk, white and colors, no two alike, 38 and 40, regular \$6 for ..... \$4.95

The Rose is the only place in Kitchener and Waterloo where you can buy the Collene Corsets; special fitting room and expert advice. Prices \$3.50 to \$7.50. Other lines at \$1.00 to \$2.50.

## THE ROSE STORE.

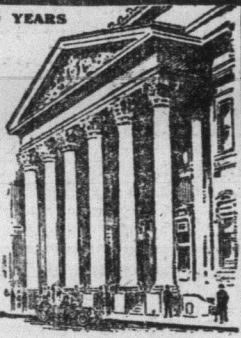
## BANK OF MONTREAL

ESTABLISHED OVER 100 YEARS

### Savings Department

Deposits of \$1. and upward received, and interest allowed at highest current rates. Savings Department accounts given special attention.

Deposits may be made, and withdrawn, by mail as easily, readily and safely as in person.



HEAD OFFICE, MONTREAL

J. J. BENSON, Manager, Kitchener Branch.

## THE MOLSONS BANK

CAPITAL AND RESERVE \$8,500,000

98 Branches in Canada

A General Banking Business Transacted

Circular Letters of Credit

Bank Money Orders

SAVINGS BANK DEPARTMENT

Interest Allowed at Highest Current Rates

KITCHENER Branch, J. R. Kirkpatrick, Manager

WATERLOO Branch, E. Haber, Manager

BRIDGEPORT Branch, O. Geiger, Manager

family. The former will appear mostly in Northern territory, and the latter in Southern territory. Brood 10 has the widest distribution of any brood. Beginning at the eastern extremity of Long Island, it sweeps west and south to the Mississippi River at Cairo, Ill., and extends as far north as central Wisconsin, and as far south as middle Georgia, with some isolated colonies as far northeast as up per Vermont, and one as far west as the boundary line between Iowa and Nebraska. The whole or portions of two states are included within this range. There are three regions of greater occurrence, one covering New Jersey, Maryland and eastern Pennsylvania, another covering all of Indiana, the greater part of Ohio and southern Michigan, and a third covering western North Carolina, eastern Tennessee and northern Georgia. Little permanent injury is wrought except to young orchards and nurseries, and even in these cases pro-

### To Cure a Cold in a few hours take DOMINION C. B. Q. Tablets (in the red box) 25 cents.

**MAIN LINE.**  
Leave Kitchener.—6.10 A.M., and thereafter every 10 minutes until 10.20 P.M., \*10.30 P.M., 10.40 P.M., \*10.50 P.M., 11.00 P.M., 11.20 P.M., 11.40 P.M., 12.00 midnight. \*Saturdays only.

Leave Waterloo.—6.30 A.M., and thereafter every 10 minutes until 10.30 P.M., 10.40 P.M., \*10.50 P.M., 11.00 P.M., \*11.10 P.M., 11.20 P.M., 11.40 P.M., 12.00 midnight, 12.20 A.M., \*Saturdays only.

**G.T.R. STATION CAR NO. 10**  
(Sundays Excepted), Leaves Albert St. at

8.00 A.M. for 8.27 A.M. going East.  
8.50 A.M. for 9.15 A.M. going West.  
11.10 A.M. for 11.32 A.M. going West.

2.10 P.M. for 2.32 P.M. going East.  
2.55 P.M. for 3.16 P.M. going West.  
4.48 P.M. for 5.20 P.M. going East.  
6.30 P.M. for 6.51 P.M. going East.  
8.50 P.M. for 9.14 P.M. going West.

#### SUNDAY CARS.

**MAIN LINE.**  
Leave Kitchener.—9.40 A.M., and thereafter every 20 minutes until 10.00 P.M., 10.40 P.M., 11.20 P.M., 12.00 midnight.

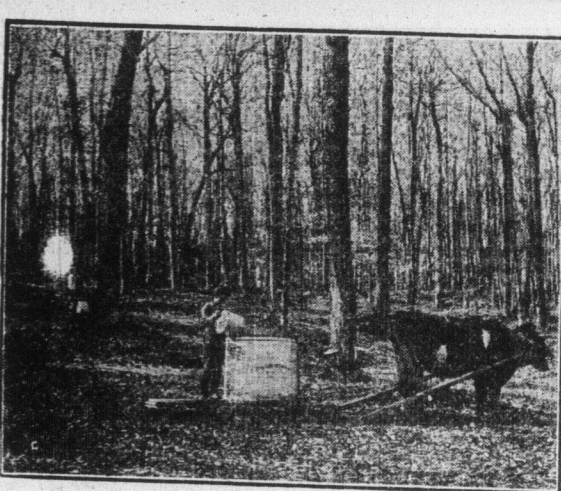
Leave Waterloo.—10.00 A.M. and thereafter every 20 minutes until 10.20 P.M., 11.00 P.M., 11.40 P.M., 12.20 A.M.



AN OLD TIME SUGAR HOUSE.



PUTTING OUT THE SAP PAILS.



GATHERING THE MAPLE HARVEST.



GUESTS AT THE "SUGARING OFF".

cautionary measures can be taken that will obviate most of the injury.

### LABOR COSTS AND FOOD PRICES

There were 4,000 farmers in attendance during "Farmers' Week," at New York State Agricultural College. One of the chief subjects of discussion was the labor question and the effect of labor costs on prices. Speaker after speaker touched upon this point, insisting that if a new order is to come in respect to hours of labor and rates of compensation, the changes must apply to the country as well as to the city. Otherwise both farm youth and farm labor will go to the city, leaving the land without workers and city markets without food. The significance of the discussion was the feeling that the readjustment in values of labor is a coming issue, that it must be met, and if the settlement is unjust to agriculture its consequences will be less food at higher prices.

A New York State farmer, writing in The American Agriculturist, says that in his neighborhood farm hands want to start at 8 o'clock and stop at 5; not all, of course, but the majority. "This," he says, "means higher costs of food. You can't pay high wages for short hours and see the old prices remain as before. The buyers of food are the people who are forcing higher prices upon the country, and they will have to pay the shot."

### BOUGHT BY GOVERNMENT

Quebec Saguenay Railway Sold at Auction for \$3,439,313. Montreal March 4.—The Quebec & Saguenay Railway was sold at auction to-day to the Federal Government, the price being \$3,439,313.53. Mr. Cope, controller of railways was present at the sale and made the only bid which was accepted by the auctioneer.

Mr. Cope gave a certified check for \$907,367.71 representing 20 per cent of the bid. The balance is to be paid in 15 days.

The Quebec & Saguenay is 68 miles

long and runs between Murray Bay and Capt. Tourmont.

### Review of Ontario Farm Conditions

The following is a summary of reports of farm conditions made by Agricultural Representatives to the Ontario Department of Agriculture. The mild winter has helped owners of live stock to bring their animals, along with less drain than usual upon fodder stores. There is plenty of both grain and roughage on hand, although there are some complaints that corn ensilage is poorer in feeding quality than in most years. With the drop in the price of oats, farmers are feeding more of that grain to their live stock.

Cattle are reported to be in fair condition, and are being marketed about as usual for the time of year. A live stock shipping club in Peterboro' sent out three carloads of cattle

### AVOID COUGHS AND COUGHERS!

Coughing Spreads Disease SINCE 1870  
**SHILOH**  
30 DROPS STOP COUGHS  
HALF TEASPOON FOR CHILDREN

### 12 Acres

With new modern red brick dwelling and good barn, situated about one mile from King Street, Waterloo, for quick sale.

A. K. CRESSMAN

Real Estate and Insurance  
Waterloo.

## Teach the Children to Save

Habits are acquired early in life. Children, who are taught the value of money, and the habit of saving, grow up into good business men and capable women.

The easiest way to teach children to save, is to start a Savings Account for each child (\$1.00 each is sufficient). After a child has saved another dollar, make an additional deposit, be it one dollar or a better appreciation of just what a dollar represents, and how much work and self-denial it represents.

## THE MERCHANTS BANK

Head Office: Montreal, CANADA Established 1864.  
KITCHENER BRANCH, D. A. MACMILLAN, Manager.  
Sub-Agency at Breslau open Wednesdays and Fridays.  
PRESTON BRANCH, H. SNEYD, Manager.  
HESPELER BRANCH, M. S. SUTHERLAND, Manager.

and three of hogs in the last two weeks.

The milk flow is keeping up well and good grade Holstein cows are bringing from \$100 to \$175.

### Hogs Holding Back.

Hogs are not going to market in large numbers and there is a tendency to turn them off somewhat light or unfinished. Prices are slightly improved and now range from \$16.50 to \$17.75 a cwt. Little pigs are selling at from \$6 to \$8 each, but at a recent auction sale in Brant some eight weeks old pigs brought \$12 apiece.

The marketing of field crops is slow, notwithstanding the large quantity of grain reported to be on hand. Hay is scarce and is selling at from \$18 to \$25 a ton. Alfalfa is bringing \$22 a ton in Norfolk. There is an abundance of shelled corn in the southwestern counties and Kent reports that some kept for seed is now being fed to the hogs.

About thirty cars of seed oats have been sent from Brant to the west, and eight from Norfolk through the Seed Commission.

Notwithstanding that most of the fall wheat fields have had little or no protection for the last two months reports regarding the crop are still hopeful.

### More Spring Wheat.

Several Representatives look for an increase acreage of spring wheat. Prince Edward's opinion however is that there is a tendency to sow less of that and the other cereals and to go more into the growing of peas and other canning factory products.

Owing to the remarkable open weather prevailing this winter more outside work than usual has been done.

The Huron Representative states that a large number of farms are changing hands at prices varying from \$6,000 to \$12,000 a hundred acres according to location and equipment.

## TODAY'S EVENTS

Birthday greetings to Champ Clark, who today enters upon his 70th year. The Roman Catholic diocese of Helena, Mont., celebrates its 35th anniversary today.

Newspaper publishers of Arkansas, Mississippi and Tennessee meet in Memphis today for the annual convention of the Tri-State Press Association.

Senator Knox of Pennsylvania and Congressman Kelly of Michigan are scheduled to speak tonight at the annual banquet of the McKinley Club of Canton, O.

A meeting is to be held in Philadelphia today by the committee on organization of the proposed council of organic union, which contemplates a tangible organic amalgamation of twenty-five Protestant denominations in the United States.

The Texas Cotton Association, whose membership handles about 90 per cent. of all the cotton exports of Texas and Oklahoma, is to meet at Galveston today for its annual convention.

The Senate Committee investigating radical agitation in the United States has tentatively set today for hearing Ambassador Francis, who has but recently arrived in the United States from Russia.

### TODAY'S CALENDAR OF SPORTS

Racing:—Winter meeting at Jefferson Park New Orleans.

Winter meeting at Havana, Cuba.

Athletics:—Dual indoor meet of Michigan and Chicago universities, at Chicago.

Basketball:—Championship tournament of Illinois Intercollegiate Athletic Association, at Bloomington.

Boxing:—Al Doty vs. Johnny Griffiths, 12 rounds, at Akron, O.

Willie Jackson vs. Frankie Farren, 4 rounds, at San Francisco.

Phiney Boyle vs. Harry Carlson, 12 rounds, at Brockton, Mass.

### OF INTEREST TO WOMEN

In Tartary a woman is paid for by her weight in butter.

In Siberia a dissatisfied husband tears his wife's veil or cap off and that constitutes a divorce.

Only four women in the United States are legally qualified to act as certified public accountants.

In Uganda the average cost of a wife is four bulls, a box of cartridges, and six sewing needles.

Miss Elsie Janis, the popular actress, declares that no man has ever taught her anything or influenced her life.

Mrs. "Dick" Burke, widow of the noted English pugilist, is the successful manager of a prominent boxing club in London.

The League of Young Men's Democratic Clubs of Oklahoma has decided in favor of receiving young women Democrats as members.

One-third of the five hundred young women students attending the University of Utah are working their way through school.

Probably the oldest active newspaper woman in the United States is Mrs. Rose Deming, who at 85 years of age is editing a daily paper in Palestine, Texas.

Following years of agitation, the British Society of Incorporated Accountants and Auditors has decided to alter its rules so as to admit women to membership.

## Darken Gray Hair, Look Young, Pretty

Sage Tea and Sulphur Darkens  
So Naturally that Nobody  
can tell.

Hair that loses its color and lustre, or when it fades, turns gray, dull and lifeless, is caused by a lack of sulphur in the hair. Our grandmother made up a mixture of Sage Tea and Sulphur to keep her hair dark and beautiful, and thousands of women and men who value that even color, that beautiful dark shade of hair which is so attractive, use only this old-time recipe.

Nowadays we get this famous mixture improved by the addition of other ingredients by asking at any drug store for a bottle of "Wyeth's Sage and Sulphur Compound," which darkens the hair so naturally, so evenly, that nobody can possibly tell it has been applied. You just dampen a sponge or soft brush with it and draw this through your hair, taking one small strand at a time. By morning the gray hair disappears, but what delights the ladies with Wyeth's Sage and Sulphur Compound is that, besides beautifully darkening the hair after a few applications, it also brings back the gloss and lustre and gives it an appearance of abundance.

Wyeth's Sage and Sulphur Compound is a delightful toilet requisite to impart color and a youthful appearance to the hair. It is not intended for the cure, mitigation or prevention of disease.

## Don't Scold, Mother! The Cross Child Is Bilious, Feverish

Look at tongue—If coated, clean little stomach, liver bowels.

Don't scold your fretful, peevish child. See if tongue is coated; this is a sure sign its little stomach, liver and bowels are clogged with sour waste. When listless, pale, feverish, full of cold, breath bad, throat sore, doesn't eat, sleep or act naturally has stomach indigestion, diarrhoea, give a teaspoonful of "California Syrup of Figs" and in a few hours all the foul waste, the sour bile and fermenting food passes out of the bowels and you have a well and playful child again. Children love this harmless "fruit laxative" and mothers can rest easy after giving it, because it never fails to make their little "insides" clean and sweet.

Keep it handy, Mother! Little given today saves a sick child tomorrow but get the genuine. Ask your druggist for a bottle of "California Syrup of Figs" which has directions for babies, children of all ages and for grown-ups plainly on the bottle. Remember there are counterfeits sold here, so surely look and see that yours is made by the "California Fig Syrup Company." Hand back with contempt any other fig syrup.

### EVERY WAGE EARNER SHOULD ANSWER QUESTION HIMSELF OR HERSELF.

What Does the Future Hold For You? Health Gives Way?

In dollars, and cents, what is the worth of the brawn of your arm; what is the value of the staying power that permits continuous labor—what are they worth to you?

Suppose you did something so foolish as to reduce your strength, vitality or judgment one half, and it were impossible to get them back—how much would you pay to regain the lost portion?

When you let yourself run down, you reduce your chances for success in life—if sleeplessness comes you score lower still—should appetite or digestion fail, you are starved in the face by physical bankruptcy.

Don't let it go so far, take Ferronine, it has cured thousands and it will cure you; it builds up bodily strength, makes muscles like steel, replaces Spring tiredness by energy and new life. Ferronine rebuilds sick folks because it contains the strengthening elements that every run-down system requires.

Especially before the hot weather comes, everyone needs a purifying tonic—Ferronine fills the bill—enjoyment—know that "juvenile" and uplifts so fast.

At once the appetite improves. You rest well and arise next morning feeling fit and fine.

Headaches disappear, weakness gives way to the vigor that only Ferronine can supply. Try it, results are guaranteed, 50c. per box or six for \$2.50 at all dealers or by mail to any Catarthone Co., Kingston, Ontario. Address price is remitted to the dealer.

## "Marmalade!"



## Lantic Sugar

CLEAR as crystal, full of the tropic sunshine which ripened the oranges and the sugar cane. For perfect Marmalade remember these three things: make it with LANTIC SUGAR; heat the sugar before adding to the fruit; do not cook too much at one time. Use any good recipe for Marmalade. There are several very excellent ones in our little set of booklets "LANTIC SWEETS" which we will send you upon receipt of a 2c. stamp to cover cost of mailing.

ATLANTIC SUGAR REFINERIES, Limited  
McGILL BUILDING, MONTREAL.