

SAVE TIME—SHOP WITH A TRANSFER CARD. Ask for a Transfer Card when you make your first purchase; each purchase is then added. You pay total at Pay-in Station, Basement.

EATON'S DAILY STORE NEWS

We prepay shipping charges on all orders of \$10.00 or over to your nearest station in Ontario and Eastern Provinces, on both Mail Orders and City Purchases.

To Mark the Coming of the Outing Season and to Draw Attention to the Splendid Resources of Women's Skirt Department
A Remarkable Special Selling of Women's Fashionable Summer Skirts
 Will Begin on Monday--An Event Which in Values, Variety and Extent is Little Short of Sensational

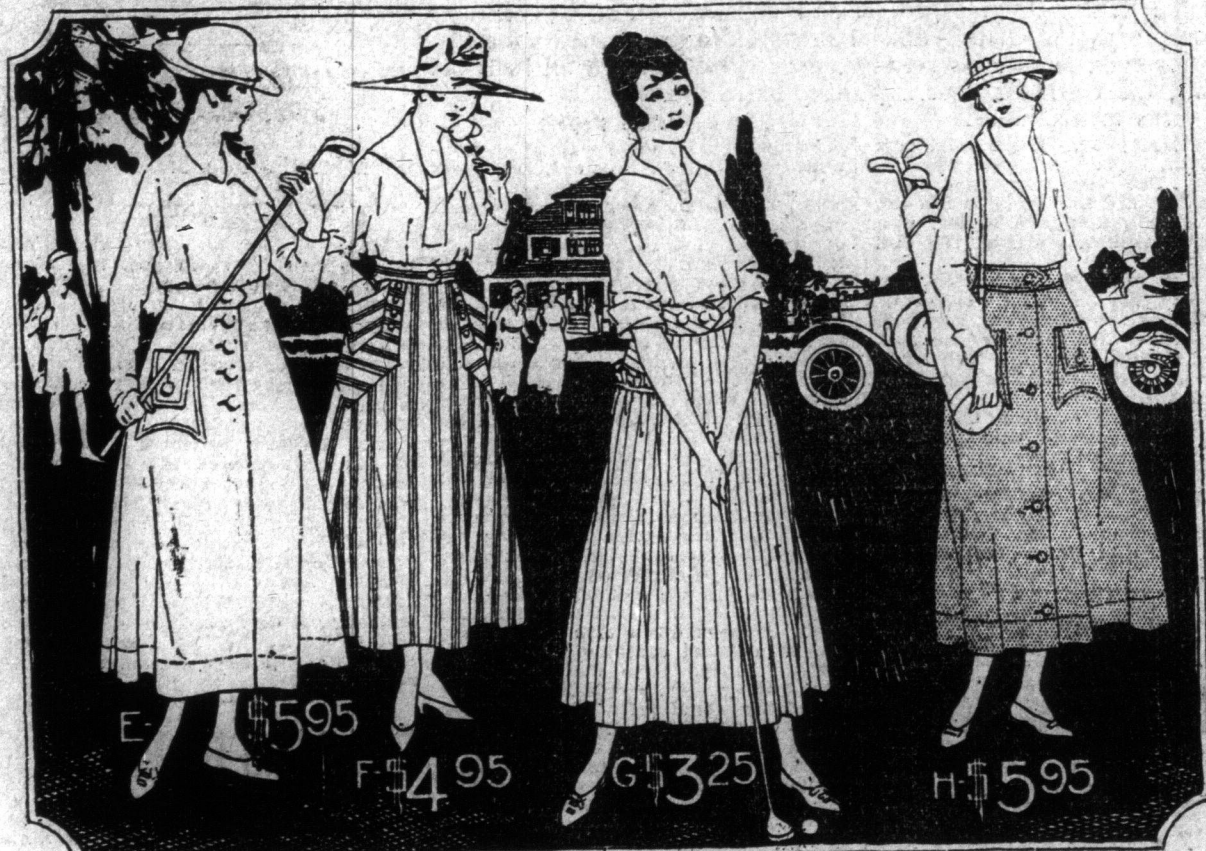


A. In "Blaser Stripes" cloth; black, rose, green or Copenhagen blue, striped with white. Sizes 22 to 30 waistbands. Price, \$1.59.
 B. In Beach cloth, Bedford cords and honeycomb weave; white only; sizes 22 to 30 waistbands. Price, \$1.15.
 C. In white gabardine, with spots in blue and brown or mauve and green. Sizes 22 to 30 waistbands. Price, \$1.59.
 D. In natural shade Beach cloth. Sizes 22 to 30 waistbands. Price, \$1.29.

Modish Materials Smart Tailoring

And a Vast Choice of Styles Suitable for Sports, Outing and General Summer Wear

The sketches on today's page indicate a few of the skirts that will be featured for Monday's selling.
 (See Yonge and Queen St. windows)



E. Imported model in fancy cream gabardine. Price, \$5.95.
 F. In fine quality Bedford cord and honeycomb combination. Black, pink and blue, striped with white. Price, \$4.95.
 G. In fine imported white gabardine, with hairline stripes of rose, green, blue or black. Price, \$3.25.
 H. Imported model in fine Palm Beach cloth. Price, \$5.95.



I. In English wide waist pique—model for stout figure, in sizes 28 to 38 waistbands. Price, \$1.50.
 J. In fine quality cotton gabardine. Extra sizes, 30 to 38 waistbands. Price, \$1.25.
 K. In fancy white cord. Extra sizes, 30 to 38. An extra special value at \$1.00.

THE skirts are of washable materials in the season's most modish weaves and colors, carefully tailored in simple, smart designs in a selection so wide as to meet the requirement of every type of figure, and the demand of every summer-time occasion. The majority of them are faithful copies of high-priced imported models. Every skirt has been made specially for this event, and will be shown for the first time on Monday. In point of price-attraction, the Department has put forth every effort to present the most notable array of values which it has ever featured in fashionable outing skirts.

- Materials**
 Cotton Gabardine
 Beach Cloth
 Bedford Cord
 Pique
 Fancy Cord
 Repp
 Basket Weave
 Blazer Stripes



Sizes
 From 22 to 30 inches waist measurements, with a special showing of models for stout figures, in sizes from 30 to 38 waist measure.



L. In Beach cloth. Rose, green and Copenhagen. Price, \$1.59.
 M. In a beautiful imported fancy cord. Sizes 22 to 28. Price, \$3.50.
 N. In fancy white corded repp. Sizes 22 to 30. Price, \$3.50.

Early Closing

During MAY, June, July, August and SEPTEMBER, Store Closes at 1 p.m. Saturdays. No Noon Delivery on Saturdays.

Saturday at 1 p.m.



O. In striped Beach cloth. Assorted colored stripes. Sizes 22 to 30 waistbands. Price, \$2.50.
 P. In various cotton gabardine weaves. White only. Sizes 22 to 30 waistbands. An extra value at \$1.50.
 Q. In mercerized Beach cloth. White. Copenhagen, rose and vesado, with white pipings. Price, \$2.25.
 R. In white Russian cord. Sizes 22 to 30 waistbands. Price, \$1.98.

A BARGAIN extraordinary for early-morning shoppers—this well-cut, well-made skirt, illustrated above. It is made of white duck, a style of skirt much in demand for tennis, golf, also for waitresses' wear in tea-rooms and restaurants. Sizes are 22 to 29 waist measure. Monday, 8.30 a.m.—special, 50 cents each.
 —Third Floor, Centre.

Out-of-Town Customers
 Who wish to order any of the skirts illustrated on this page are requested to state their second and third choice—to be supplied in event of the model of their first choice being sold out. Address all orders to the Shopping Service.



S. In fine, white only, basket weave, with fancy stripes. Sizes 22 to 28 waistbands. Price, \$2.95.
 T. In fancy white cord. Sizes 22 to 28 waistbands. Price, \$2.95.
 U. Imported model in satin-finish self striped repp. Price, \$2.95.
 V. Imported model in fine white gabardine. Price, \$3.25.

THE T. EATON CO. LIMITED