

Peace and Harmony in the Home!



Mr. MAN:

If your wife selects her WALL PAPERS from us, you will always enjoy a pipe of peace—Because—in the designing of



Watson Foster's Wall Paper

all colors and effects are properly blended, giving the Papers that appearance of Restfulness, which induces that feeling of peace and contentment so essential to true Happiness.



You are the Judge! My Shoes:

Says the Lawyer—have a hard Judge to please. I used to listen to all sorts of arguments, but my feet put in a plea for mercy. On a true bill from a grand jury of users,

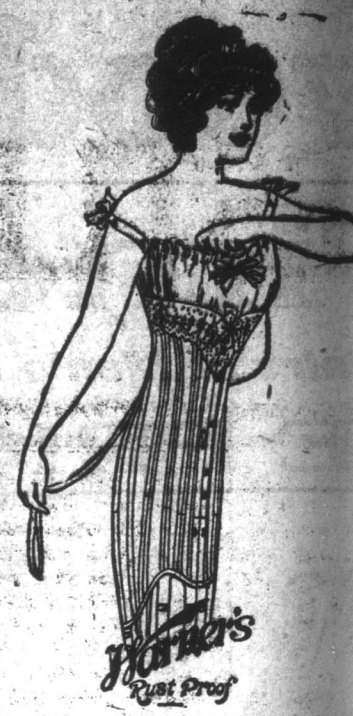
I Gave INVICTUS a Trial

It was good counsel, and I concurred in the decision of the Jury.

To sum up in brief—the “Upper” Court has confirmed as “Sole residuary” of my feet

INVICTUS SHOES.

Price \$13.80 per Pair for Cash



THEY FIT! WARNER'S Rust-Proof CORSETS



and they fit just as well after two or three months' wear as they do when you first try them on.

They give your figure graceful, slender contours; they yield to every movement of your body but they never lose that firm control over the lines of your figure that first attracted you, and they are guaranteed not to

RUST, BREAK OR TEAR.

Prices

\$1.80 to \$6.00 pair

We are Sole Agents for the Above Lines MARSHALL BROS.

SIDE TALKS.

By Ruth Cameron.

DON'T TORMENT YOURSELF.

"I never can forgive myself," I once heard a woman say. "I was so sure I was one of the best of my kind, but I let it in for me. I was so sure I was one of the best of my kind, but I let it in for me. I was so sure I was one of the best of my kind, but I let it in for me."

She is absolutely convinced that the world would not have developed into what it is today if she had not let Philip go. And yet it seems to me that the chances are just as strong that the world is not true.

Yet it wouldn't have been. I thought of this woman the other day when another woman told me that she had once given up having a very dear which had been offered her because her husband firmly believed that doing this disease into his house. "I hated to give him up at the time," she said, "but I was ever so glad I did afterwards for I know when Rachel was so sick with scarlet fever and we couldn't find out where she got it, he would have thought it was the dog. It wouldn't have been, but I never could have made him believe it and I should have felt myself as if it might have been, and felt dreadfully about it."

And it's just as likely that the pneumonia might have gotten started whether Philip skated or not.

"I Told You So" But— I had a very striking experience along this same line in my own family. I wanted to take a certain dear old lady on a trip she had wanted all her life to take. The rest of the family opposed the idea. "She isn't strong enough," they said. "It would be altogether too much for her. She might go to pieces." I didn't believe that it would have that effect. Happiness seldom does, to my way of thinking. Enjoyment gives you an extra supply of strength. But I was finally overborne. And what happened? The dear lady didn't have the trip but she did have the breakdown. She would have had it anyway but do you suppose I could ever have convinced anyone of that if we had had our way. Surely not. They would have said that the trip had caused the breakdown just as they prophesied. Yet it would not have caused it at all. Perhaps it might have even averted it. Who knows?

Maybe We Shall Find Out Some Day. The whole business of what causes what is a very mixed up matter. We say coolly that this or that wouldn't have happened if someone hadn't done this or that. And sometimes we are right. And sometimes we are utterly wrong. We never can know surely—at least not in this life. Maybe in the next we shall be allowed to ask the answer to some of these problems all about cause and effect.

In the meantime it seems to me that the only wise thing to do is to act with the best judgment and the best intentions possible and not torment ourselves with regrets over results—or what appear to be results.

Have you a Suit or Overcoat to be made. Bring it to FARRELL THE TAILOR, Adelaide Street. First class work at moderate prices.—sept28.11

Poultry Raising in Newfoundland.

By W. K. CHANCEY.

Article V.

The cost of producing eggs for market of course varies for reasons too obvious to mention, and anything laid down here is not to be considered as a law of the Medes and Persians which changeth not.

The average production of the commercial flock, the amount of feed given as consumed per capita, and the cost of overhead expenses, may be taken as being pretty near the mark as a guide to figure from.

In Grain Growing States it has been estimated that eggs can be produced and show a profit when sold at a price of forty to forty-five cents a dozen. A prominent and world famous authority is responsible for the statement that eggs cannot be produced in a commercial way in extreme central States for less than fifty-two cents and allow a reasonable profit to the producer.

While sometimes blamed for high prices of eggs the Commercial egg producer has very little to say in such matters as a rule. His eggs are forwarded to various market centres and he receives payment from wholesale dealers according to current market quotations. In other words he has to accept the price others are willing to pay for his product whether it nets him a profit or not. The Law of Supply and Demand figures in his line of business just as surely as it does in other lines. Farmers may sometimes market a few cases of eggs at low prices where they have looked upon them as a bye product. These prices represent a fictitious value which cannot be taken as standard. Bidding against other lines of industry for labor, capital, materials, etc., and having over head expenses in there any valid reason, why the farmer should not be paid on the basis of the cost of production and a fair profit allowed him similar to those other industries.

A hen consumes from eighty to one hundred pounds of feed a year, and under careful experiments where all feed was accurately weighed the average consumption (omitting fractions) was ninety-one pounds of grain and mash feed per hen for all breeds under test, and two pounds of grit and charcoal. In spite of the advent of the two hundred egg hen, and a few small flocks with exceptionally high averages, the following figures on production will be found approximately correct. Farm flocks eighty egg per year.

Medium sized flocks kept under proper conditions and given due attention one hundred and fifty to one

hundred and eighty eggs per year. And the yearly reports from upwards of thirty-five Commercial plants where large flocks are kept show the yearly average per hen to be one hundred and twenty eggs. With wheat at \$3.75 per sack, and laying mash at \$3.50, Scratch feed \$3.75 the cost of feed at the present time will figure around four cents a pound laid in. A one man poultry farm in a commercial way is generally considered a one thousand bird farm. Let us figure on five hundred here.

BARE COST OF FEEDING A HEN FOR ONE YEAR.

61 lbs. of Grain and mash feeds @ 4c. lb. \$3.64
2 lbs. Grit, Shell, and Charcoal @ 3c. lb.06
Approx. Green Feed (in winter) 12

Total \$3.82

Whether the farmer hires labor or performs all the work himself a charge for same is justifiable. Put this item as low as thirty dollars a month or 360.00 a year and on five hundred birds it works out around seventy-two cents a bird. We now have

Cost of feed and material per bird 72

Total \$4.54

Let 5% cover over head expenses

Home-made Remedy Stops Coughs Quickly

The best cough medicine you ever used. A family supply easily and quickly made. Ready about 25.

You might be surprised to know that the best thing you can use for a severe cough is a remedy which is easily prepared at home in just a few moments. It's cheap, but for prompt results it beats anything else you ever tried. Usually stops the ordinary cough or chest cold in 24 hours. Tastes pleasant. Good for children like it—and it is pure and good. Four 2½ ounces of Pinex in a 16-oz. bottle; then fill it up with plain granulated sugar syrup. Or use clarified molasses, honey, or corn syrup. Instead of sugar syrup, if desired. Thus you make 16 ounces—a family supply—but costing no more than a small bottle of ready-made cough syrup.

And as a cough medicine, there is really nothing better to be had at any price. It goes right to the spot and gives relief, easing relief. It penetrates the inflamed membranes that line the throat and air passages, stops the sneezing, throat tickle, looseness of phlegm, and soon your cough stops entirely. Splendid for bronchitis, croup, whooping cough, and all other coughs.

Pinex is a highly concentrated compound of Norway pine extract, famous for its healing effect on the membrane. To avoid disappointment, ask your druggist for 2½ ounces of Pinex with directions and don't accept anything else. Guaranteed to give absolute satisfaction or money refunded. The Pinex Co., Toronto, Canada.

such as insurance, interest on Capital, depreciation, shipping expenses and other incidentals.

Brought forward. Cost Feed. Labor, etc. \$4.54

Add 5% over head expense 237

Surely 10% profit is in order 476

Total \$5.243

This represents the revenue which must be obtained from every hen if cost of production plus a 10 per cent. profit is to come to the producer. Dividing the Commercial plant production of 100 eggs per hen per annum, into this amount gives us in straight figures a price of fifty-two cents a dozen which the producer must average the year round to net a profit of 10%.

The value of his hens as meat can

be overlooked as receipts from fowls sold as meat would be about equivalent to cost of replacing them with pullets in his laying house.

In case 5% as over head expense may be looked on as a padded item, let us see if 22.7 cents of 5% on feed and labor is an over estimate or otherwise. Let two dollars a bird be allotted to cover houses, equipment, owners residence, etc., and put the very conservative value of \$1000.00 on a five hundred bird plant. Now value stock as low as one dollar a bird and we have an investment of 1,500.00 to figure on. Deducting 25% of the value of the plant at \$1000.00 to represent the land itself, leaves \$750.00 in buildings, etc., that are subject to charges for depreciation. Let us sum up.

Interest on investment of \$1,500.00 at 6% \$90.00

Depreciation on Buildings \$750.00 at 5% \$37.50

Insurance (say) 4.00

Total \$131.50

Dividing \$131.50 by 500 to get rate per bird gives us in straight figures 26 cents as against 22 cents where flat rate of 5% on feed and labor was figured on as over head.

Figuring producers cost, Wholesale and Retailers legitimate charges for handling and marketing, it is hard to locate Jesse James in the market eggs business in spite of opinions to the contrary.

Don't fail to come to the T.A. Hall on next Tuesday night, big Card Party and Dance, will be held by the T.A. Ladies' Auxiliary. Tickets 50c. Bennett orchestra in attendance.—nov8.61

Interest on investment of \$1,500.00 at 6% \$90.00

Depreciation on Buildings \$750.00 at 5% \$37.50

Insurance (say) 4.00

Total \$131.50

Dividing \$131.50 by 500 to get rate per bird gives us in straight figures 26 cents as against 22 cents where flat rate of 5% on feed and labor was figured on as over head.

Figuring producers cost, Wholesale and Retailers legitimate charges for handling and marketing, it is hard to locate Jesse James in the market eggs business in spite of opinions to the contrary.

Don't fail to come to the T.A. Hall on next Tuesday night, big Card Party and Dance, will be held by the T.A. Ladies' Auxiliary. Tickets 50c. Bennett orchestra in attendance.—nov8.61

Interest on investment of \$1,500.00 at 6% \$90.00

Depreciation on Buildings \$750.00 at 5% \$37.50

Insurance (say) 4.00

Total \$131.50

Dividing \$131.50 by 500 to get rate per bird gives us in straight figures 26 cents as against 22 cents where flat rate of 5% on feed and labor was figured on as over head.

Figuring producers cost, Wholesale and Retailers legitimate charges for handling and marketing, it is hard to locate Jesse James in the market eggs business in spite of opinions to the contrary.

Don't fail to come to the T.A. Hall on next Tuesday night, big Card Party and Dance, will be held by the T.A. Ladies' Auxiliary. Tickets 50c. Bennett orchestra in attendance.—nov8.61

Interest on investment of \$1,500.00 at 6% \$90.00

Depreciation on Buildings \$750.00 at 5% \$37.50

Insurance (say) 4.00

Total \$131.50

Dividing \$131.50 by 500 to get rate per bird gives us in straight figures 26 cents as against 22 cents where flat rate of 5% on feed and labor was figured on as over head.

Figuring producers cost, Wholesale and Retailers legitimate charges for handling and marketing, it is hard to locate Jesse James in the market eggs business in spite of opinions to the contrary.

Don't fail to come to the T.A. Hall on next Tuesday night, big Card Party and Dance, will be held by the T.A. Ladies' Auxiliary. Tickets 50c. Bennett orchestra in attendance.—nov8.61

Interest on investment of \$1,500.00 at 6% \$90.00

Depreciation on Buildings \$750.00 at 5% \$37.50

Insurance (say) 4.00

Total \$131.50

Dividing \$131.50 by 500 to get rate per bird gives us in straight figures 26 cents as against 22 cents where flat rate of 5% on feed and labor was figured on as over head.

Figuring producers cost, Wholesale and Retailers legitimate charges for handling and marketing, it is hard to locate Jesse James in the market eggs business in spite of opinions to the contrary.

Don't fail to come to the T.A. Hall on next Tuesday night, big Card Party and Dance, will be held by the T.A. Ladies' Auxiliary. Tickets 50c. Bennett orchestra in attendance.—nov8.61

Interest on investment of \$1,500.00 at 6% \$90.00

Depreciation on Buildings \$750.00 at 5% \$37.50

Insurance (say) 4.00

Total \$131.50

Dividing \$131.50 by 500 to get rate per bird gives us in straight figures 26 cents as against 22 cents where flat rate of 5% on feed and labor was figured on as over head.

Figuring producers cost, Wholesale and Retailers legitimate charges for handling and marketing, it is hard to locate Jesse James in the market eggs business in spite of opinions to the contrary.

Don't fail to come to the T.A. Hall on next Tuesday night, big Card Party and Dance, will be held by the T.A. Ladies' Auxiliary. Tickets 50c. Bennett orchestra in attendance.—nov8.61

Interest on investment of \$1,500.00 at 6% \$90.00

Depreciation on Buildings \$750.00 at 5% \$37.50

Insurance (say) 4.00

Total \$131.50

Dividing \$131.50 by 500 to get rate per bird gives us in straight figures 26 cents as against 22 cents where flat rate of 5% on feed and labor was figured on as over head.

Figuring producers cost, Wholesale and Retailers legitimate charges for handling and marketing, it is hard to locate Jesse James in the market eggs business in spite of opinions to the contrary.

Don't fail to come to the T.A. Hall on next Tuesday night, big Card Party and Dance, will be held by the T.A. Ladies' Auxiliary. Tickets 50c. Bennett orchestra in attendance.—nov8.61

Interest on investment of \$1,500.00 at 6% \$90.00

Depreciation on Buildings \$750.00 at 5% \$37.50

Insurance (say) 4.00

Total \$131.50

Dividing \$131.50 by 500 to get rate per bird gives us in straight figures 26 cents as against 22 cents where flat rate of 5% on feed and labor was figured on as over head.

Figuring producers cost, Wholesale and Retailers legitimate charges for handling and marketing, it is hard to locate Jesse James in the market eggs business in spite of opinions to the contrary.

Don't fail to come to the T.A. Hall on next Tuesday night, big Card Party and Dance, will be held by the T.A. Ladies' Auxiliary. Tickets 50c. Bennett orchestra in attendance.—nov8.61

Interest on investment of \$1,500.00 at 6% \$90.00

Depreciation on Buildings \$750.00 at 5% \$37.50

Insurance (say) 4.00

Total \$131.50

Dividing \$131.50 by 500 to get rate per bird gives us in straight figures 26 cents as against 22 cents where flat rate of 5% on feed and labor was figured on as over head.

Figuring producers cost, Wholesale and Retailers legitimate charges for handling and marketing, it is hard to locate Jesse James in the market eggs business in spite of opinions to the contrary.

Don't fail to come to the T.A. Hall on next Tuesday night, big Card Party and Dance, will be held by the T.A. Ladies' Auxiliary. Tickets 50c. Bennett orchestra in attendance.—nov8.61

Interest on investment of \$1,500.00 at 6% \$90.00

Depreciation on Buildings \$750.00 at 5% \$37.50

Insurance (say) 4.00

Total \$131.50

Dividing \$131.50 by 500 to get rate per bird gives us in straight figures 26 cents as against 22 cents where flat rate of 5% on feed and labor was figured on as over head.

Figuring producers cost, Wholesale and Retailers legitimate charges for handling and marketing, it is hard to locate Jesse James in the market eggs business in spite of opinions to the contrary.

Don't fail to come to the T.A. Hall on next Tuesday night, big Card Party and Dance, will be held by the T.A. Ladies' Auxiliary. Tickets 50c. Bennett orchestra in attendance.—nov8.61

Interest on investment of \$1,500.00 at 6% \$90.00

Depreciation on Buildings \$750.00 at 5% \$37.50

Insurance (say) 4.00

Total \$131.50

Dividing \$131.50 by 500 to get rate per bird gives us in straight figures 26 cents as against 22 cents where flat rate of 5% on feed and labor was figured on as over head.

Figuring producers cost, Wholesale and Retailers legitimate charges for handling and marketing, it is hard to locate Jesse James in the market eggs business in spite of opinions to the contrary.

Don't fail to come to the T.A. Hall on next Tuesday night, big Card Party and Dance, will be held by the T.A. Ladies' Auxiliary. Tickets 50c. Bennett orchestra in attendance.—nov8.61

Interest on investment of \$1,500.00 at 6% \$90.00

Depreciation on Buildings \$750.00 at 5% \$37.50

Insurance (say) 4.00

Total \$131.50

Dividing \$131.50 by 500 to get rate per bird gives us in straight figures 26 cents as against 22 cents where flat rate of 5% on feed and labor was figured on as over head.

Figuring producers cost, Wholesale and Retailers legitimate charges for handling and marketing, it is hard to locate Jesse James in the market eggs business in spite of opinions to the contrary.

Don't fail to come to the T.A. Hall on next Tuesday night, big Card Party and Dance, will be held by the T.A. Ladies' Auxiliary. Tickets 50c. Bennett orchestra in attendance.—nov8.61

Interest on investment of \$1,500.00 at 6% \$90.00

Depreciation on Buildings \$750.00 at 5% \$37.50

Insurance (say) 4.00

Total \$131.50

Dividing \$131.50 by 500 to get rate per bird gives us in straight figures 26 cents as against 22 cents where flat rate of 5% on feed and labor was figured on as over head.

Figuring producers cost, Wholesale and Retailers legitimate charges for handling and marketing, it is hard to locate Jesse James in the market eggs business in spite of opinions to the contrary.

Don't fail to come to the T.A. Hall on next Tuesday night, big Card Party and Dance, will be held by the T.A. Ladies' Auxiliary. Tickets 50c. Bennett orchestra in attendance.—nov8.61

Interest on investment of \$1,500.00 at 6% \$90.00

Depreciation on Buildings \$750.00 at 5% \$37.50

Insurance (say) 4.00

Total \$131.50

Dividing \$131.50 by 500 to get rate per bird gives us in straight figures 26 cents as against 22 cents where flat rate of 5% on feed and labor was figured on as over head.

Figuring producers cost, Wholesale and Retailers legitimate charges for handling and marketing, it is hard to locate Jesse James in the market eggs business in spite of opinions to the contrary.

Don't fail to come to the T.A. Hall on next Tuesday night, big Card Party and Dance, will be held by the T.A. Ladies' Auxiliary. Tickets 50c. Bennett orchestra in attendance.—nov8.61

Interest on investment of \$1,500.00 at 6% \$90.00

Depreciation on Buildings \$750.00 at 5% \$37.50

Insurance (say) 4.00

Total \$131.50

Dividing \$131.50 by 500 to get rate per bird gives us in straight figures 26 cents as against 22 cents where flat rate of 5% on feed and labor was figured on as over head.

Figuring producers cost, Wholesale and Retailers legitimate charges for handling and marketing, it is hard to locate Jesse James in the market eggs business in spite of opinions to the contrary.

Don't fail to come to the T.A. Hall on next Tuesday night, big Card Party and Dance, will be held by the T.A. Ladies' Auxiliary. Tickets 50c. Bennett orchestra in attendance.—nov8.61

Interest on investment of \$1,500.00 at 6% \$