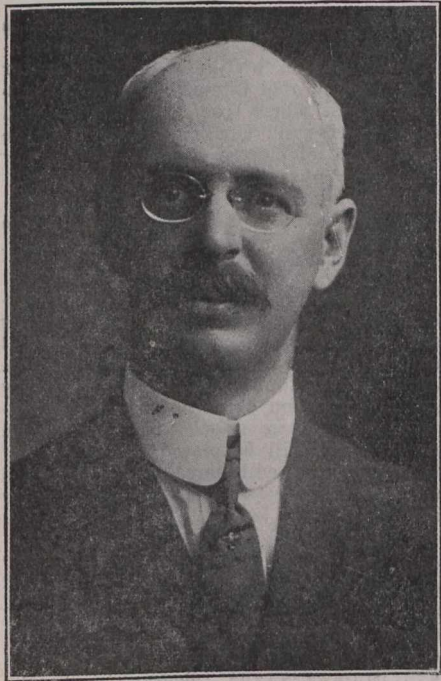


be taken over by the city. It is expected that the city will arrange with the company for the operation of the section of line as at present, until the city has made plans for operating it in connection with other civically owned lines. (Oct., pg. 521.)

**Toronto Suburban Ry.**—We are officially advised that it is possible that the gauge of this railway, 4 ft. 10½ ins., will be



**E. P. Coleman,**  
General Manager, Dominion Power and Transmission Company.

changed to standard gauge in the near future, but that no definite decision has been reached.

The extension which is being built from near Lambton, through Summerville, and Cooksville, to Georgetown and Guelph, is to be standard gauge. Good progress is being made with the grading on the Maher subcontract, which extends to Cooksville, and it is expected that the steel will be laid by Christmas.

**Winnipeg Electric Ry.**—We are officially advised that the Winnipeg, Selkirk and Lake Winnipeg Ry., a subsidiary company, has let a contract for the building of a line to Stonewall, Man., and that work will be started at once. The line will start from near Middlechurch, on the company's present line, follow the right of way of the Stoney Mountain spur, which has been acquired from the Winnipeg city council, and then on to Stonewall. (Oct., pg. 520.)

#### Personal Paragraphs.

Miss L. W. Moyes, second daughter of J. W. MOYES, promoter of the Ontario and West Shore Ry., was married in Toronto recently to J. H. Bickle.

**JAS. GRAHAM**, heretofore an erecting engineer for the Canadian General Electric Co., chiefly in the maritime provinces, has been appointed General Superintendent, Yarmouth Street Ry., Yarmouth, N.S.

**LUDWIG ROTHERY**, son of J. E. Rothery, General Manager Toronto & Eastern Ry., has resigned his position as Superintendent of construction in the Tri State Ry. & Electric Co.'s power house at East Liverpool, Ohio, to take a post graduate course at Toronto University, of which he is a graduate.

A portrait published in Canadian Railway and Marine World for September, and which

had under it the caption, "F. D. BURPEE, Superintendent and Purchasing Agent, Ottawa Electric Ry.," was really a portrait of W. C. Lancaster, Electrical and Mechanical Engineer, Montreal Tunnel and Terminal Construction, Mackenzie, Mann & Co., the photographs received from the two persons named having been transposed in the office. Mr. Burpee's portrait is therefore given correctly in this issue. Biographical information respecting him was published in the August issue, pg. 419.

**GEO. E. WALLER**, who has been appointed General Superintendent of Railways, Dominion Power and Transmission Co., Hamilton, Ont., was born in Barton tp., Ont., Aug. 23, 1871, and entered transportation service in 1896, acting as conductor and motorman, Hamilton, Grimsby and Beamsville Electric Ry., and remained as such until 1897, when he was appointed agent, and in 1899, General Manager and Secretary, same road. He continued in that capacity until 1908, when he was appointed General freight and Passenger Agent, Dominion Power and Transmission Co., which position he held at the time of his present appointment.

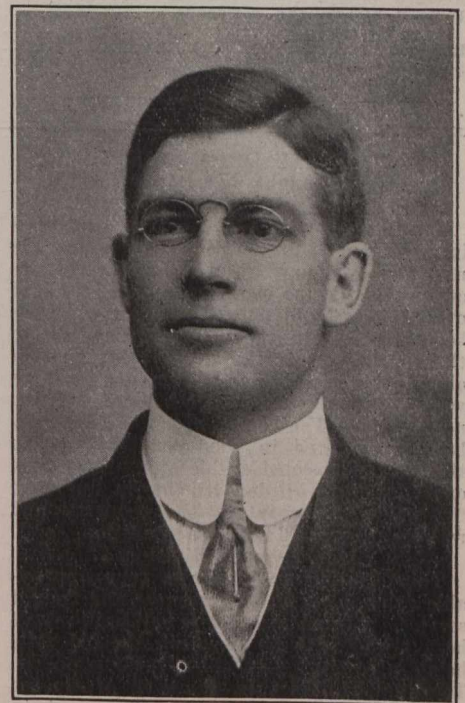
**C. B. KING**, Manager London Street Ry., London, Ont., who has been elected Vice President Canadian Street Railway Association, and whose portrait appears in this issue, was born at Gallena, Southern Indiana, Sept. 12, 1871, and was educated at the public and high schools, New Albany, Ind., graduating in 1891. He entered electric railway service in its early days with the Louisville Ry., and served in its shops, and subsequently to 1895 in the stores department. In 1895 he entered the Detroit Citizens Street Ry. service and occupied various positions to 1905, chiefly as Assistant to the Vice President and General Manager, since when he has been Manager London Street Ry.

**S. W. MOWER**, for the last six years General Manager, London and Lake Erie Ry. and Transportation Co., and of its predecessor the London and South Western Traction Co., at London, Ont., has been appointed General Manager of the Otsego and Herkimer Rd., at Hartwick, N.Y., to succeed J. K. Choate, resigned. This company operates an electric line of 54.91 miles, connecting Oneonta, Hartwick, Coopers-town, Richfield Springs, Mohawk and Herkimer, N.Y., and reaches Utica by the Utica and Mohawk Valley Ry. It is advertised as "the most beautiful scenic route in central New York." It has 27 motor and 60 other cars, and operates 10 trains each way per day. Mr. Mower was in the Detroit United Ry. service before going to London.

**EDWARD P. COLEMAN**, who has been appointed General Manager, Dominion Power and Transmission Co., controlling various electric railways in and around Hamilton, Ont., and whose portrait appears in this issue, was born at Taunton, Mass., June 14, 1867, and educated at the public schools there. He was from Feb. 9, 1885, to Feb. 9, 1896, in the Hubec Printing Press draughting office at the Taunton Locomotive Manufacturing Co.'s shops, with which his father and grandfather were associated for many years; Jan. 1, 1896, to Sept. 1, 1900, Treasurer and General Manager, Attleboro Steam and Electric Co., Attleboro, Mass.; May 5, 1898, to Mar. 31, 1899, in United States service during the Spanish war as Second Lieutenant and Battalion Adjutant, 5th Massachusetts Infantry; July 1, 1899, to Sept. 1, 1900, General Manager, Plymouth Electric Light Co., Plymouth, Mass.; Sept. 1, 1900, to June 1, 1905, Vice President and General Manager, Consolidated Lighting Co., Montpelier, Vt.; June 1, 1905, to Mar. 1, 1907, in practice as consulting engineer,

general, electric light, power, railway and quarry work, and Treasurer and Manager, Wetmore and Morse Granite Co., Montpelier, Vt.; Mar. 1, 1907, to Jan. 1, 1909, General Manager, Great Northern Power Co., Duluth, Minn.; and Mar. 1, 1909, to Oct. 10, Manager of Railways, Dominion Power and Transmission Co., Ltd., Hamilton, Ont.

**PATRICK DUBEE**, who has been elected President, Canadian Street Railway Association, and whose portrait appears in this issue, was born at Montreal, Mar. 4, 1876, and was educated at the Christian Brothers school and at St. Patrick's academy, there. He started as office boy with the Montreal St. Ry., July 9, 1890, two years before the electrification of the road, and has remained in its employ ever since, occupying various positions in the offices of the Secretary, Comptroller and Manager, until May, 1901, when he was appointed Assistant Secretary at the time that W. G. Ross was appointed Secretary-Treasurer. In Dec., 1903, Mr. Ross having been elected Managing Director, Mr. Dubee was appointed Secretary. In 1903, when the Montreal St. Ry. Mutual Benefit Association was organized, the details were left in his hands, and he was subsequently elected a director and Secretary-Treasurer of the Association, and has occupied those positions continuously. The association thus organized is recognized as the most successful of its kind on the continent. In 1901, when the Montreal St. Ry. Co. acquired control of the Montreal Park and Island Ry. Co., he was also appointed Secretary of the latter company, and in 1904 on the organization of the Suburban Tramway and Power Co., he was also appointed Secretary-Treasurer, and in 1909, in addition, was appointed Secretary-Treasurer of the Longueuil Tramways Co. On the recent consolidation of the Montreal St. Ry. Co., and its subsidiary companies under the title of Montreal Tramways Co., he was



**F. D. Burpee,**  
Superintendent and Purchasing Agent, Ottawa Electric Railway.

appointed Secretary-Treasurer of the new company, which position he still holds. He has taken a very active part in the Canadian Street Railway Association's proceedings since its inception in 1904, having been a member of the executive committee for several years, and for the year 1911-12 Vice President.