

INDURATED FIBRE WARE.

THE E. B. EDDY CO.

| | |
|----------------------------------|--------|
| 1/2 pail, 6 qt. | \$3 35 |
| Star Standard, 12 qt. | 3 80 |
| Milk, 14 qt. | 4 75 |
| Round-bottomed fire pail, 14 qt. | 4 75 |
| Tubs, No. 1. | 13 30 |
| " " 2. | 11 40 |
| " " 3. | 9 50 |
| Fibre Butter Tubs (30 lbs) | 3 80 |
| Nests of 3. | 2 85 |
| Keelers No. 4. | 8 00 |
| " " 5. | 7 00 |
| " " 6. | 6 00 |
| " " 7. | 5 00 |
| Milk Pans. | 2 65 |
| Wash Basins, flat bottoms | 2 65 |
| " " round bottoms | 2 50 |
| Handy Dish. | 2 25 |
| Water Closet Tanks. | 17 00 |
| Dish Pan, No. 1. | 6 20 |
| " " 2. | 6 20 |
| Barrel Covers and Trays | 4 75 |
| Railroad or Factory Pails. | 4 75 |

JAMS AND JELLIES.

SOUTHWELL'S GOODS. per doz.

Frank Magor & Co., Agents.

| | |
|------------------------|------|
| Orange Marmalade. | 1 50 |
| Clear Jelly Marmalade. | 1 80 |
| Strawberry W. F. Jam. | 2 00 |
| Raspberry " " | 2 00 |
| Apricot " " | 1 75 |
| Black Currant " " | 1 85 |
| Other Jams, W. F. | 1 55 |
| Red Currant Jelly. | 2 75 |

P. G. JELLY POWDER.

Raspberry, strawberry, orange, lemon, vanilla, pineapple, cherry, calves foot and grape fruit, doz. cases, 90c. per doz.

P. G. ICINGS.

Chocolate 2 doz. cases \$1.25 per doz.
Lemon, white, pink, canary and Kerneline 2 doz. cases, \$1.00 per doz.

T. UPTON & CO.

Raspberry, Strawberry, Red Currant, Pineapple.

| | |
|--|--------|
| 1-lb. glass jars, 2 doz. in case, per doz | \$1 00 |
| 5-lb. tin pails, 8 pails in crate, per lb. | 0 63 |
| 7-lb. wood pails, 6 | 0 63 |
| 14-lb. wood pails, per lb. | 0 63 |
| 30-lb. " " | 0 63 |

LICORICE.

YOUNG & SMYLYE'S LIST.

| | |
|--|--------|
| 5-lb. boxes, wood or paper, per lb. | \$0 40 |
| Fancy boxes (35 or 50 sticks) per box. | 1 25 |
| " Ringed " 5 lb. boxes, per lb. | 0 40 |
| "Acme" Pellets, 5 lb. cans, per can. | 2 00 |
| "Acme" Pellets, fancy boxes (40) per box | 1 50 |
| Tar, Licorice and Tolu Wafers, 5 lb. cans, per can | 2 00 |
| Licorice Lozenges, 5 lb. glass jars. | 1 75 |
| " " 5 lb. cans | 1 50 |
| "Purity" Licorice, 200 sticks | 1 45 |
| " " 100 sticks | 0 73 |
| Dulce, large cent sticks, 100 in box | 0 75 |

MINCE MEAT.

| | |
|-----------------------------------|---------|
| Wethy's Condensed, per gross, net | \$10 80 |
| per case of 3 doz., net. | 2 70 |
| Nicholson's, per gross. | 10 80 |
| per 1/4 gross case. | 2 70 |

MUSTARD.

COLMAN'S OR KEEN'S.

| | |
|----------------------------------|--------|
| D. S. F., 1/4 lb. tins, per doz. | \$1 40 |
| " " 1/2 lb. tins, " " | 2 50 |
| " " 1 lb. tins, " " | 5 00 |

In Jars—

| | |
|------------------------------|------|
| Durham, 4 lb. jars, per jar. | 0 75 |
| 1 lb. " " | 0 25 |

F. D., 1/4 lb. tins, per doz

| | |
|-------------------|------|
| " " 1/2 lb. tins. | 0 85 |
| " " 1 lb. tins. | 1 45 |

FRENCH MUSTARD

Crown Brand—(Greig Mfg. Co.)

| | |
|---------------------|---------------------|
| per gross. | per gross |
| Pony size... \$7 50 | Beer Mug... 11 50 |
| Small Med. 7 50 | Tumbler... 11 50 |
| Medium... 10 80 | Cream Jug... 21 00 |
| Large... 12 00 | Sugar Bowl... 22 00 |
| Spoon... 18 00 | Caddy... 28 00 |

THE F. F. DALLEY CO.

| | |
|--|------|
| Dalley's Mustard, bulk, pure, per lb. | 0 25 |
| Dalley's Mustard, 1/2 lb. tins, 2 doz. in case, per doz. | 2 00 |
| Dalley's Mustard, 1/4 lb. tins, 4 doz. in case, per doz. | 1 00 |
| Dalley's Superfine Durham Mustard bulk, per lb. | 0 19 |
| 1/2 lb. tins, 4 doz. in case, per doz. | 0 65 |
| 1 lb. tins, 2 | 1 20 |
| 1 lb. jars, per doz. | 2 40 |
| 4 lb. | 7 80 |
| 1/4 lb. glass tumblers. | 0 75 |
| Jersey Butter Color, 2 oz. btls, per oz. | 1 25 |
| 1 gallon tins, per gal. | 2 50 |
| Celery Salt, 2 oz. btls, sil. tops, per doz | 1 25 |
| Curry Powder, 2 oz. bottles, silver tops per doz. | 1 75 |

ORANGE MARMALADE.

T. UPTON & CO.

| | |
|--|----------|
| 1-lb. glass jars, 2 doz. case, per doz. | \$1 00 |
| 7-lb. pails, 6 pails in crate, per lb. | 0 07 1/2 |
| Silver Pan, 1-lb. fancy glass jars, 2 doz. in case, per doz. | 1 30 |

PICKLES—STEPHENS'

A. F. TIPPET & Co., AGENTS.

| | |
|-----------------------------------|------|
| Patent stoppers (pints), per doz. | 2 30 |
| orked (pints), " " | 1 90 |

SODA.—C BRAND



Case of 1 lbs. (containing 60 pkgs.), per box, \$3.00
Case of 1/2 lbs. (containing 120 pkgs.), per box, \$3.00
Case of 1/4 lbs. and 1/8 lbs. (containing 30 packages) per box, \$3.00

SOAP.

JOHN TAYLOR & CO.
Eclipse (Twin-bar), per box \$4 00
Freight prepaid 5 box lots. Special discount for larger quantities.

BRANTFORD SOAP WORKS CO.



"Ivory Bar" Soap is put up in Twin Cakes' 12 oz. each, and in Bars, 1 lb., 2 1/2 lb. and 3 lb. Quotations furnished for "Ivory Bar" and other grades of soap on application.



"Ivory Bar" Soap is put up in Twin Cakes' 12 oz. each, and in Bars, 1 lb., 2 1/2 lb. and 3 lb. Quotations furnished for "Ivory Bar" and other grades of soap on application.



A. F. TIPPET & CO., AGENTS.
Maypole Soap, colors per gross, \$10.20
Maypole Soap, black, per gross, \$15.30
Ortolo Soap, per gross, \$10.20

STARCH.

EDWARDSBURG STARCH CO., LTD.

| | |
|------------------------------------|----------|
| Laundry Starches— | per lb. |
| No. 1 White or Blue, 4-lb. cartons | 0 05 1/2 |
| No. 2 " " 3-lb. | 0 05 1/2 |
| Canada Laundry | 0 04 1/2 |
| Silver Gloss, 6-lb. draw lid boxes | 0 07 |
| Silver Gloss, 6-lb. tin canisters. | 0 07 |
| Edwards'g Silver Gloss, 1-lb. pkg. | 0 07 |
| Kegs Silver Gloss, large crystals | 0 06 |
| Benson's Satin, 1-lb. cartons. | 0 07 1/2 |
| No. 1 White, btls. and kegs. | 0 04 1/2 |
| Benson's Enamel, per box. | 3 00 |

Culinary Starch—
W. T. Benson & Co.'s Prep. Corn 0 06
Canada Pure Corn 0 04 1/2

Rice Starch—
Edwardsburg No. 1 white, 1-lb. cart. 0 09
Edwardsburg No. 1 White or Blue, 4-lb. lumps. 0 07 1/2

THE F. F. DALLEY CO.

| | |
|---|----------|
| Boston—Laundry, 40 pkgs. to box, per package | 0 07 1/2 |
| Culinary—Toledo Corn Starch, 40 pkgs. to box, per lb. 5/8c. | |



KINGSFORD'S ORWEGO STARCH.



SILVER (40-lb. boxes, 1-lb. pkgs., 0 08
GLOSS (12-lb. boxes, sliding covers 0 08 1/2
PURE—40-lb. boxes 1-lb. pack... 0 07
48-lb. " " 16 3-lb. boxes... 0 07

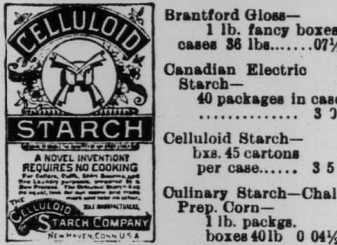
For puddings, custards, etc.
OSWEGO 40-lb. boxes, 1-lb. COEN STARCH. packages... 07 1/2

ONTARIO } 38-lb. to 45-lb. boxes,
STARCH IN } 6 bundles 0 06
SILVER GLOSS 0 7 1/2
PURE 0 6 1/2

THE BRANTFORD STARCH CO., LTD.

Laundry Starches—

| | |
|-------------------------------------|----------|
| Canada Laundry, boxes of 40 lbs. | 0 4 1/2 |
| Acme Gloss, 1-lb. cart., 40 lb. box | 0 4 1/2 |
| Finest Quality White Laundry— | |
| 3 lb. canisters, cases 38 lbs. | 0 05 1/2 |
| 4 lb. canisters, cases 48 lbs. | 0 5 1/2 |
| Btls., 175 lbs. | 0 0 1/2 |
| Kegs, 100 lbs. | 0 0 1/2 |
| Lily White Gloss— | |
| 1 lb. fancy cartons, cases 30 lbs. | 0 07 |
| 6 lb. trunk, brass catch 8 in case | 0 07 |
| 6 lb. trunk lock and key, 8 in case | 0 07 1/2 |
| 6 lb. enamelled tin, 8 in case | 0 07 |
| Kegs, extra large crystals, 100 lbs | 0 06 |

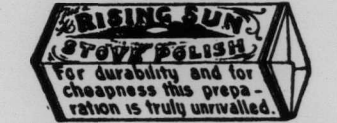


Brantford Gloss—
1 lb. fancy boxes cases 36 lbs. 07 1/2
Canadian Electric Starch—
40 packages in case 3 7
Culinary Starch—Chal' Prep. Corn—
1 lb. packages boxes 40 lb. 0 04 1/2
No. 1 Pure Prepared Corn—
1-lb. pkgs., boxes 40 lb. 0 06

STOVE POLISH.



Enameline Stove Polish. For durability and for cheapness this preparation is truly unrivalled.



Rising Sun, 6-oz. cakes, 1/2-gross boxes \$ 8 50
Rising Sun, 3-oz. cakes, gross boxes 4 50
Sun Paste, 10c. size, 1/4 gross boxes 10 00
Sun Paste, 5c. size, 1/4 gross boxes 5 00



Tiger Stove Polish, 1/4 gross boxes, large per gross, \$7.20; small, per gross, \$4.50
Stovepipe Varnish, 4 oz. bottles..... 1 00
" " 6 oz. bottles..... 1 25
Boston Brunswick Black, 8 oz. bot's. 1 75



SILVERINE. Per gross. \$3 50
No. 4—5c. size \$3 50
No. 6—8c. size 5 50
No. 8—10c. size 6 50

TEAS.



Brown Label, 1's 0 20
" " 1/2's 0 21
Green Label, 1's and 1/2's 0 22
Blue Label, 1's, 1/2's and 1/4's 0 30
Red Label, 1's and 1/2's 0 36
Gold Label, 1/2's 0 44



Cases, each 60 1-lb. 0 35
" " 30 1-lb. 0 35
" " 120 1/2-lb. 0 36

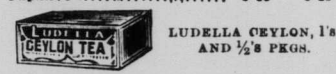


Ceylon Tea, in 1-lb. and 1/2-lb. lead packages black or mixed.
Black Label, 1-lb., retail at 20c. 0 19
1/2-lb., " " 0 20
Blue Label, retail at 30c. 0 22
Green Label " 40c. 0 28
Red Label " 50c. 0 35
Orange Label, retail at 60c. 0 42
Gold Label, " 80c. 0 55

CROWN BRAND.

Ceylon in lead packages

| | | |
|-----------------------------|------|------|
| Red Label, 1-lb. and 1/2's | 0 35 | 0 50 |
| Blue Label, 1-lb. and 1/2's | 0 28 | 0 40 |
| Green Label, 1-lb. | 0 18 | 0 25 |
| Green Label, 1/2's | 0 19 | 0 25 |
| Japan, 1's | 0 19 | 0 25 |



Blue Label, 1's 0 18 1/2
Blue Label, 1/2's 0 19
Orange Label, 1's and 1/2's 0 21
Brown Label, 1's and 1/2's 0 28
Brown Label, 1's 0 30
Green Label, 1's and 1/2's 0 35
Red Label, 1/2's 0 40

TOBACCOES.

EMPIRE TOBACCO CO.

| | |
|--|------|
| Smoking— | |
| Empire, 3's, 4's and 9's | 0 36 |
| Royal Oak, 2 x 3, Solace, 8s. | 0 52 |
| Something Good, rough and ready, 7s | 0 53 |
| Louise, 2 x 3, 14s | 0 54 |
| Chewing— | |
| Currency 13 1/2 oz. bars, spaced 9s, (10 1/2 to the lb.) | 0 39 |
| Patriot, 2 x 6, Navy 5s | 0 41 |
| Old Fox, narrow 12s | 0 44 |
| Free Trade, 8s. | 0 44 |
| Snowshoe, 10 1/2 oz. bars, spaced 8s, (12 to the lb.) | 0 44 |
| Snowshoe, pound bars, spaced 6s. | 0 44 |

WOOL SOAP.

SWIFT & CO., CHICAGO.
Wool soap, 100 10-oz. bars to box \$7 75
Wool soap, 100 6-oz. bars to box 4 75

WOODENWARE.

THE E. B. EDDY CO. per doz

| | |
|----------------------|------|
| Washboards, X | 1 40 |
| " " XX | 1 60 |
| " " Waverly | 1 70 |
| " " Planet | 1 80 |
| " " Special Globe | 1 70 |
| " " Solid Back Globe | 1 80 |
| " " Electric Duplex | 2 50 |

Matches—

| | |
|-----------------------|---------------|
| 5-Case Lots | Single Case |
| Telegraph | \$3 40 \$3 70 |
| Telephone | 3 30 3 60 |
| Tiger | 3 20 3 50 |
| Telephone (1/2-gross) | 3 50 3 70 |
| Empire, (slide box) | 2 25 2 50 |
| Safety, Capital | 2 75 2 80 |
| Parlor, Eagle, 200 s. | 1 30 1 40 |
| " " 100 s. | 1 50 1 60 |
| " " Victoria | 2 50 2 60 |
| " " Little Comet | 2 00 2 10 |
| Flamers | 2 25 2 35 |
| " (wax stems) | 3 20 3 30 |

BOCKH BROS. & COMPANY.

Washboards, Leader Globe 1 45
" " Improved Globe 1 00
" " Standard Globe 1 10
" " Solid Back Globe 1 70
" " Jubilee (perforated) 2 50
" " Crown 1 35
F. o. b. Toronto.

Matches, Kodak, per case (10 gross in case) 38