

SEVERAL STATES DENY BLACK RUST

Say Reports Are Not True - No Damage - Big Crop Promised.

CHICAGO, June 4.—Extraordinary reports of a bumper crop in Nebraska, Kansas and Oklahoma had much to do with causing speculators to turn the bear side in wheat. The dread of a black rust scare flattened out and prices were disappointing to the bulls.

Proved Negative. Black rust developments proved almost entirely negative. Oklahoma dispatches that although rust spores were manifest on June 3, they were not apparent.

EIGHT CARLOADS OF BERRIES ARRIVE

Wholesale Fruit and Vegetable Dealers Had Busy Day.

The wholesale fruit and vegetable dealers were quite busy yesterday. Eight carloads of strawberries, which included the delayed shipment of Wednesday, arriving in the city, as well as one carload of watermelons, which was the initial entry of this popular, juicy fruit.

GRAIN STATISTICS

Table with columns: GRAIN, Today, Last wk, Last yr. Rows include Wheat, Corn, Rye, Barley, etc.

LIVERPOOL CLOSE

Wheat 1/4 lower; corn, 1/4 lower.

ARGENTINE ESTIMATED

Table with columns: Wheat, Corn, Rye, Barley. Rows include various grain types and their estimated values.

NORTHWEST CARS

Table with columns: Wheat, Today, Last wk, Last yr. Rows include wheat and other grain statistics.

PRIMARY MOVEMENT

Table with columns: Wheat, Corn, Rye, Barley. Rows include primary movement statistics.

WINNIPEG GRAIN MARKET

WINNIPEG, June 4.—Cash close: Wheat—No. 1 northern, 80c; No. 2 northern, 78c; No. 3 northern, 76c; No. 4 northern, 74c.

SUGAR PRICES

Local wholesale quotations on sugar in 100-lb. bags are as follows: Extra granulated, Redpath's, 44 1/2.

CHEESE MARKETS

PETERBORO, June 4.—1404 cheese offered at today's meeting of the Peterboro cheese board.

BROCKVILLE, Ont. June 4.—At today's cheese board 20 white sold at 12-1/2c, 20 colored at 12-1/2c and 200 colored at 12c.

MADOC, Ont. June 4.—500 boxes of cheese boxed, all sold at 12-1/2c.

WANKLEEK HILL, Ont. June 4.—There were 975 boxes white and 275 boxes colored cheese boxed and sold at Wankleek Hill cheese board here today.

BEING FOR THEMSELVES

A party of bankers, business men and capitalists are at present on a trip of inspection thru the Canadian West.

CATTLE STEADY OFFERINGS LIGHT

Spring Lambs Exceptionally Strong - Heavy Cattle Neglected.

Receipts of live stock at the Union Yards were 40 cars, 213 cattle, 2183 hogs, 114 sheep and lambs, and 114 calves.

What the Grain Brokers Say

Walter Fitch and Co., Presura, will increase as the movement of the wheat approaches, and we think its weight will be felt ere long.

LARGEST SUGAR CROP ON RECORD

WASHINGTON, June 4.—Official figures show that the best sugar crop of the United States for the campaign beginning in the fall of 1913 was the largest on record.

FARMERS WANT MEN

TOPEKA, June 4.—The States of Kansas, Missouri and Oklahoma will need more than \$2,000,000 additional hands to harvest the bumper crop in these states.

WILL FIGHT COMBINE

LONDON, June 4.—The Standard announces that important negotiations are pending for a consolidation of British shipping interests in order to fight the Hamburg-American and North German Lloyd companies, which are suspected of having formed a combine.

BANK OF ENGLAND STATEMENT

LONDON, June 4.—The weekly statement of the Bank of England shows the following changes: Total reserves, decreased £1,000,000; gold, increased £1,000,000; bullion, increased £4,988,000; other securities, decreased £238,000.

FARM PRODUCE, WHOLESALE

Hay, No. 1, car lots, \$14.50 to \$15.00; Hay, No. 2, car lots, \$13.00 to \$14.00; Straw, car lots, \$8.50 to \$9.00.

POULTRY, WHOLESALE

Cold storage prices are as follows: Turkey, per lb., 21 to 22; Geese, per lb., 14 to 15; Ducks, per lb., 14 to 15; Chickens, per lb., 17 to 18; Hens, per lb., 14 to 17.

HIDES AND SKINS

Prices revised daily by E. T. Carter & Co., 38 East Front street, Dealers in Wool, Yarn, Hides, Catfkins and Sheepskins, Raw Furs, Tallow, etc.

DEPRESSION WORLDWIDE

LONDON, June 4.—Word from St. Petersburg to The Times says business is at a standstill on the Russian bourse.

ONTARIO HAS A NEW OIL GUSHER

Pressure Blew Ton Weight Fifty Feet - Roar Heard for Miles.

OIL SPRINGS, Ont., June 4.—A new oil gusher was struck this morning on the property of the Oil Springs Oil and Gas Company within the town limits.

What the Grain Brokers Say

Walter Fitch and Co., Presura, will increase as the movement of the wheat approaches, and we think its weight will be felt ere long.

LARGEST SUGAR CROP ON RECORD

WASHINGTON, June 4.—Official figures show that the best sugar crop of the United States for the campaign beginning in the fall of 1913 was the largest on record.

FARMERS WANT MEN

TOPEKA, June 4.—The States of Kansas, Missouri and Oklahoma will need more than \$2,000,000 additional hands to harvest the bumper crop in these states.

WILL FIGHT COMBINE

LONDON, June 4.—The Standard announces that important negotiations are pending for a consolidation of British shipping interests in order to fight the Hamburg-American and North German Lloyd companies, which are suspected of having formed a combine.

BANK OF ENGLAND STATEMENT

LONDON, June 4.—The weekly statement of the Bank of England shows the following changes: Total reserves, decreased £1,000,000; gold, increased £1,000,000; bullion, increased £4,988,000; other securities, decreased £238,000.

FARM PRODUCE, WHOLESALE

Hay, No. 1, car lots, \$14.50 to \$15.00; Hay, No. 2, car lots, \$13.00 to \$14.00; Straw, car lots, \$8.50 to \$9.00.

POULTRY, WHOLESALE

Cold storage prices are as follows: Turkey, per lb., 21 to 22; Geese, per lb., 14 to 15; Ducks, per lb., 14 to 15; Chickens, per lb., 17 to 18; Hens, per lb., 14 to 17.

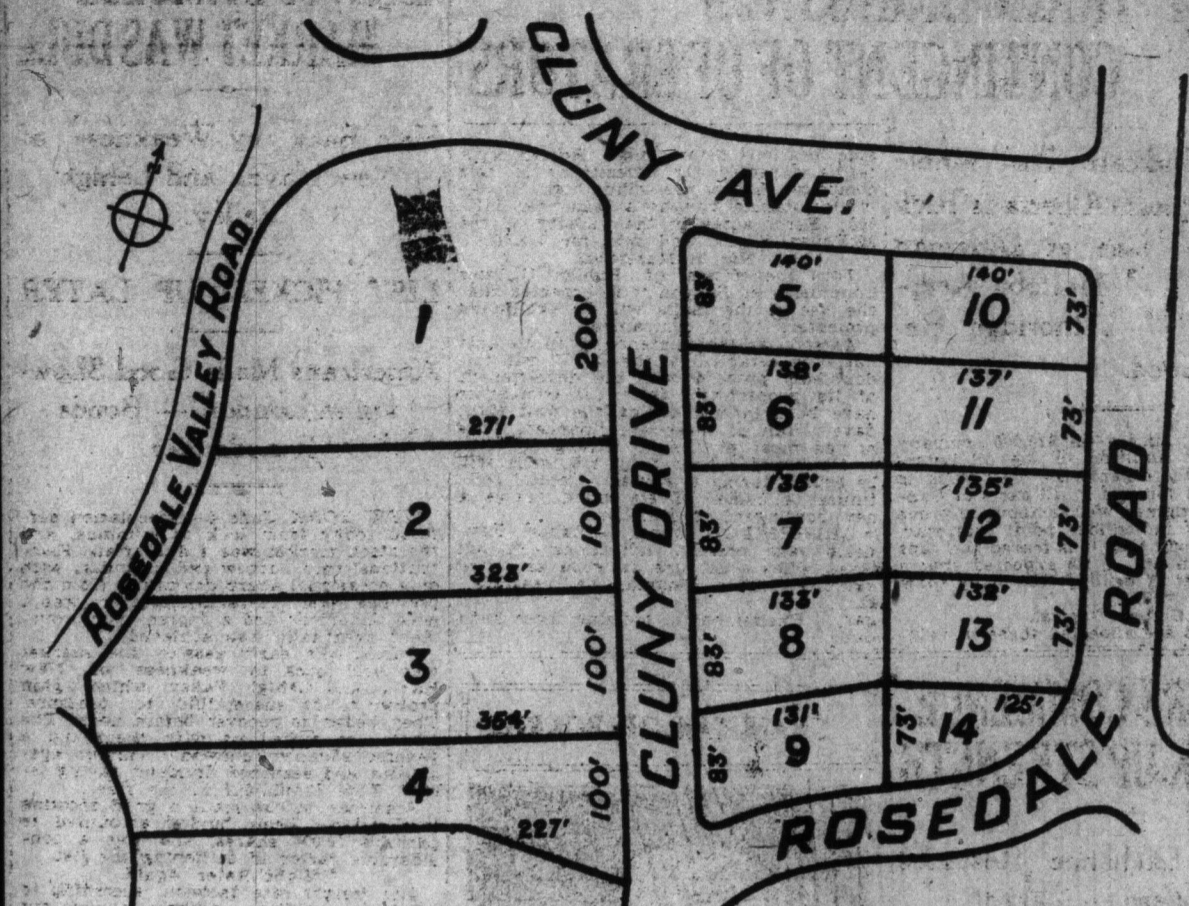
HIDES AND SKINS

Prices revised daily by E. T. Carter & Co., 38 East Front street, Dealers in Wool, Yarn, Hides, Catfkins and Sheepskins, Raw Furs, Tallow, etc.

DEPRESSION WORLDWIDE

LONDON, June 4.—Word from St. Petersburg to The Times says business is at a standstill on the Russian bourse.

Choice South Rosedale Residential Lots for Sale



THE above survey of fourteen lots has been made of the beautiful six-acre Park property situated just south of the corner of Cluney Avenue and Crescent Road, in the very finest and most convenient part of South Rosedale. The new street to be run north and south through the property will be called Cluney Drive.

Norman D. Perry & Co. Canada Life Building. Telephone Main 2771

EXECUTIVE HEAD IS RELIEVED OF DUTIES

Wm. A. Garrett of Pere Marquette Railway Steps Down.

WILL FIGHT COMBINE

LONDON, June 4.—The Standard announces that important negotiations are pending for a consolidation of British shipping interests in order to fight the Hamburg-American and North German Lloyd companies, which are suspected of having formed a combine.

BANK OF ENGLAND STATEMENT

LONDON, June 4.—The weekly statement of the Bank of England shows the following changes: Total reserves, decreased £1,000,000; gold, increased £1,000,000; bullion, increased £4,988,000; other securities, decreased £238,000.

FARM PRODUCE, WHOLESALE

Hay, No. 1, car lots, \$14.50 to \$15.00; Hay, No. 2, car lots, \$13.00 to \$14.00; Straw, car lots, \$8.50 to \$9.00.

POULTRY, WHOLESALE

Cold storage prices are as follows: Turkey, per lb., 21 to 22; Geese, per lb., 14 to 15; Ducks, per lb., 14 to 15; Chickens, per lb., 17 to 18; Hens, per lb., 14 to 17.

HIDES AND SKINS

Prices revised daily by E. T. Carter & Co., 38 East Front street, Dealers in Wool, Yarn, Hides, Catfkins and Sheepskins, Raw Furs, Tallow, etc.

DEPRESSION WORLDWIDE

LONDON, June 4.—Word from St. Petersburg to The Times says business is at a standstill on the Russian bourse.

PUBLIC GOLD STORAGE advertisement. For Eggs, Butter, Cheese, etc. Includes contact information for Public Cold Storage and Warehouse Co. at Strachan Avenue, Toronto.

UNION STOCK YARDS advertisement. THE PRINCIPAL MARKET FOR BEEF, FEEDER AND DAIRY CATTLE, SHEEP, LAMBS, HOGS AND HORSES. Located in Toronto, Ontario.

Cartoon advertisement for 'That Son-in-Law of Pa's'. Features a man and a woman in a kitchen setting. The man is talking to the woman about a 'chop' (meat) and a 'fried mush'. The woman is concerned about the man's health and the quality of the food.

Vertical advertisements on the far left edge of the page. Includes 'Market', 'ANADA', 'you system', 'Y, Limited', 'Sale', 'SPACE IN THE YAL BANK DING', 'ary Oil', '& Co., Ltd.', 'VEST & CO.', 'MARVIN', 'PERSON & CO.', and 'REET CLOSE'.

That Son-in-Law of Pa's. Copyright, 1914, by Newspaper Feature Service. Great Britain Rights Reserved.

TIGHT BINDING