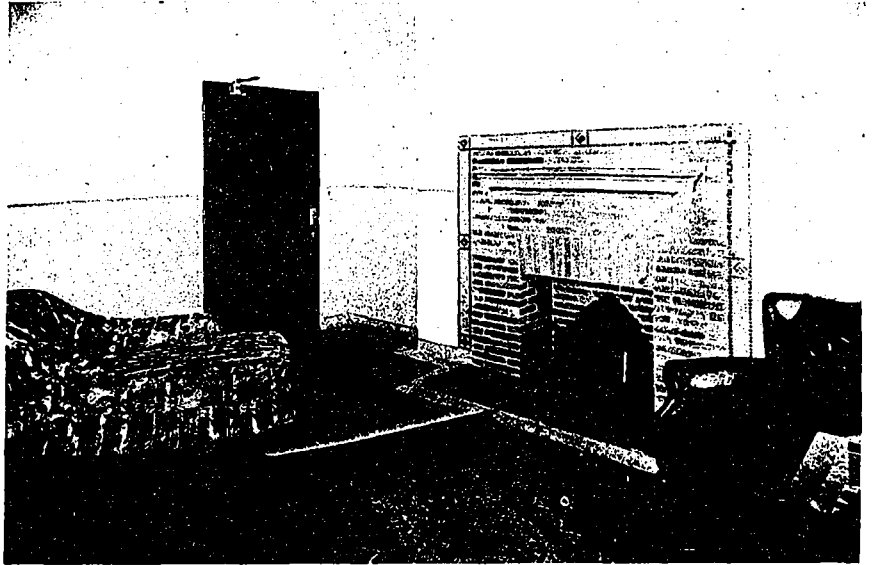


It is divided into three sections—scullery, where rough work and the preparation of food is done; the central portion, where all foods are cooked; and the serving portion, where the food is loaded into the food trucks preparatory to its transit to the various ser-vices. Connected with this department are the special dining rooms, store rooms, refrigerators and service stairs.

From the main entrance hall, through a special corridor, are the rooms for the use of the special nurses, consisting of locker room, dressing booths and baths. Ad-joining the main entrance, on the south is a series of waiting and examining rooms. Locker and



PRIVATE SUITE IN ROSS MEMORIAL WING OF ROYAL VICTORIA HOSPITAL, MONTREAL.



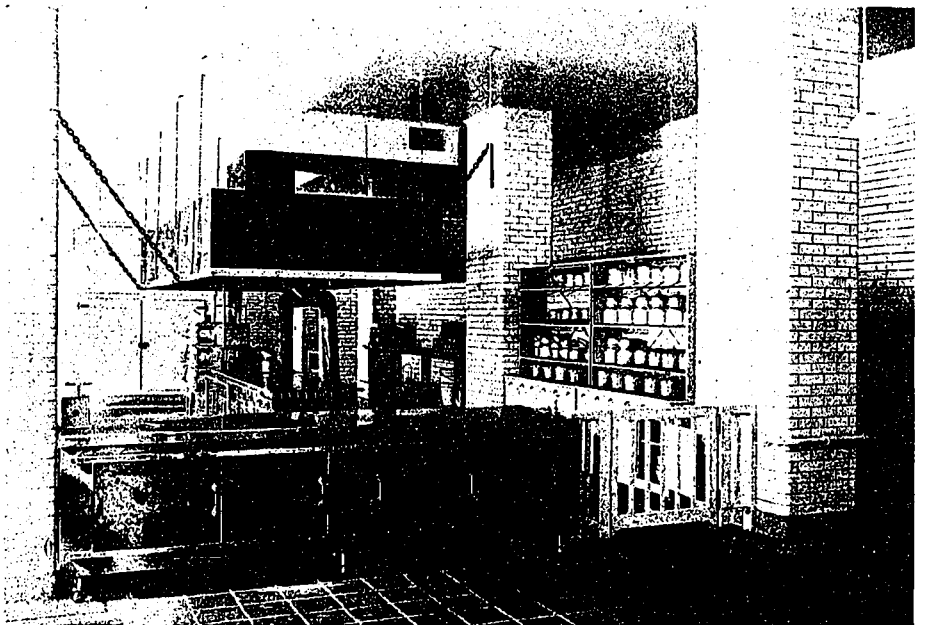
SERVING ROOM IN ROSS MEMORIAL WING OF ROYAL VICTORIA HOSPITAL, MONTREAL.

toilet rooms are provided near the main entrance for the accommodation of staff members.

On this floor is a complete Roentgen or X-Ray department, with the most modern equipment. This consists of a suite of two operating rooms, control room, developing room, view room, plate storage and toilet. A special room is set apart for the electro-cardiograph, with wires extending to the different floors, so that records may be taken without moving the patient from his own bed. A large medical treatment department, consisting of the various baths—shower, needle, douche, sitz, continuous, car-

bon dioxide, etc. Also rooms for electric cabinets, baking and hot-packs, rest rooms, etc., are provided. A small psychopathic department, with continuous bath, is provided for the occasional need of patients requiring rest and isolation.

While there are no patients located on this first floor except the occasional psychopathic patients, the entire second, third and fourth floors, and a large portion of the fifth floor are devoted to their comfort. On the central axis of each story is a large airing balcony, of sufficient size to allow many beds and patients in wheel chairs. Connected with these balconies on each floor are the office of the head nurse and sitting room



KITCHEN IN ROSS MEMORIAL WING OF ROYAL VICTORIA HOSPITAL, MONTREAL.