

## Dependable Power For Your Factory

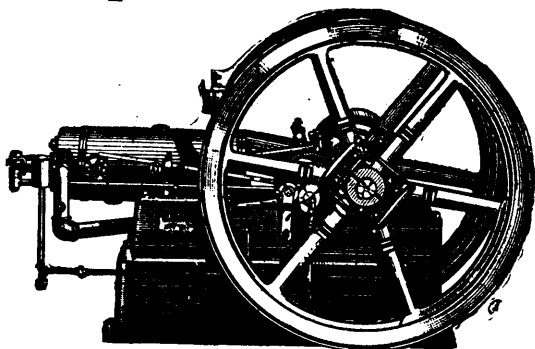
**T**HERE is no better power available.  
No more economical, steady and dependable power.

No power that will increase the capacity and decrease the cost of production so effectually, as that afforded by an

## I. H. C. Gas and Gasoline ENGINE

Any man of ordinary intelligence can run an I.H.C. gasoline engine without previous experience.

We would like to show you how much more simple they are than any other engines made—how much more easily they are operated and kept in perfect running order, and why they develop more power from the same amount of fuel.



We illustrate and explain these points and every other detail in our complete catalogue. Every man who uses power or contemplates installing it ought to get this book.

You will find that the I.H.C. line of engines includes just the style and the size best suited to your requirements.

Guaranteed to develop rated horse power. Adapted to the use of Gasoline, Gas or Denatured Alcohol.

### HORIZONTAL ENGINES:

Stationary, 4, 6, 8, 10, 12 and 15 H.P.

Portable, 6, 8, 10, 12 and 15 H.P.

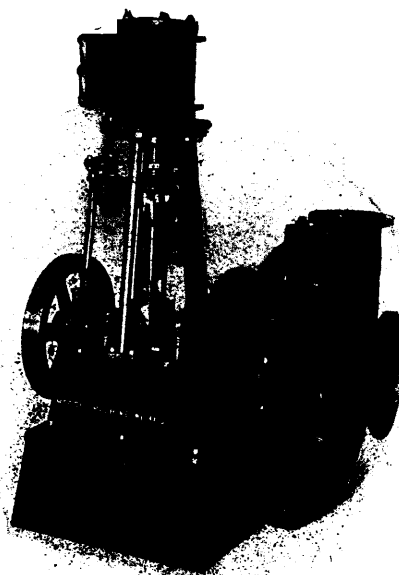
Vertical, 2, 3 and 5 H.P.

**SEND FOR THE CATALOGUE TO-DAY.**

## International Harvester Company of America

(INCORPORATED)

7 GG Monroe St., CHICAGO, ILL.



## Morris Machine Works.

BALDWINVILLE, N.Y.

MANUFACTURERS OF

### Centrifugal Pumping Machinery

### and Steam Engines

**SPECIAL PUMPING OUTFITS TO SUIT  
SPECIAL REQUIREMENTS**

Estimates Furnished upon Application.

**H. W. PETRIE, Agent  
TORONTO, CANADA.**

NEW YORK OFFICE: 39-41 CORTLANDT ST.

HENION & HUBBELL, Agents  
61-69 North Jefferson St., CHICAGO, ILL.

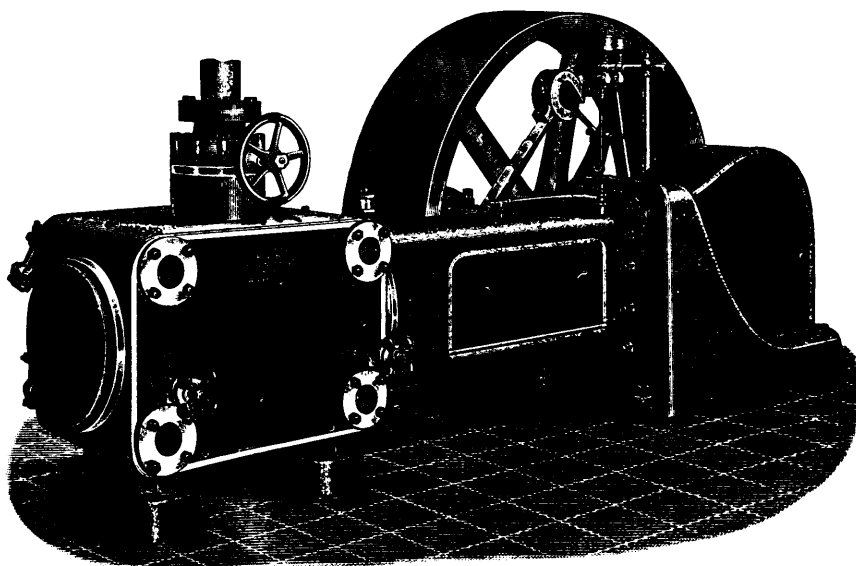


## DEEP WELL PUMPS

Steam Geared or Electrically Driven.

Deep Well Pumping Systems for Cities, Railroad,  
Mines, Factories, etc.

**DOWNIE PUMP CO., Downieville, Pa., U.S.A.**



Our Corliss engines are fitted with Robb-Armstrong Corliss valve gear, which has the following good points.

**Positively Driven  
Encased in Oil**

**Minimum Wear**

**Runs Noiselessly  
Minimum Friction**

## Robb Engineering Co., Limited

**AMHERST, N.S.**

**District Offices** { 320 Ossington Ave., Toronto, **WILLIAM McKAY, Manager.**  
Bell Telephone Bldg., Montreal, **WATSON JACK, Manager.**  
355 Carlton Street, Winnipeg, **J. F. PORTER, Manager.**

When writing to Advertisers kindly mention THE CANADIAN MANUFACTURER.