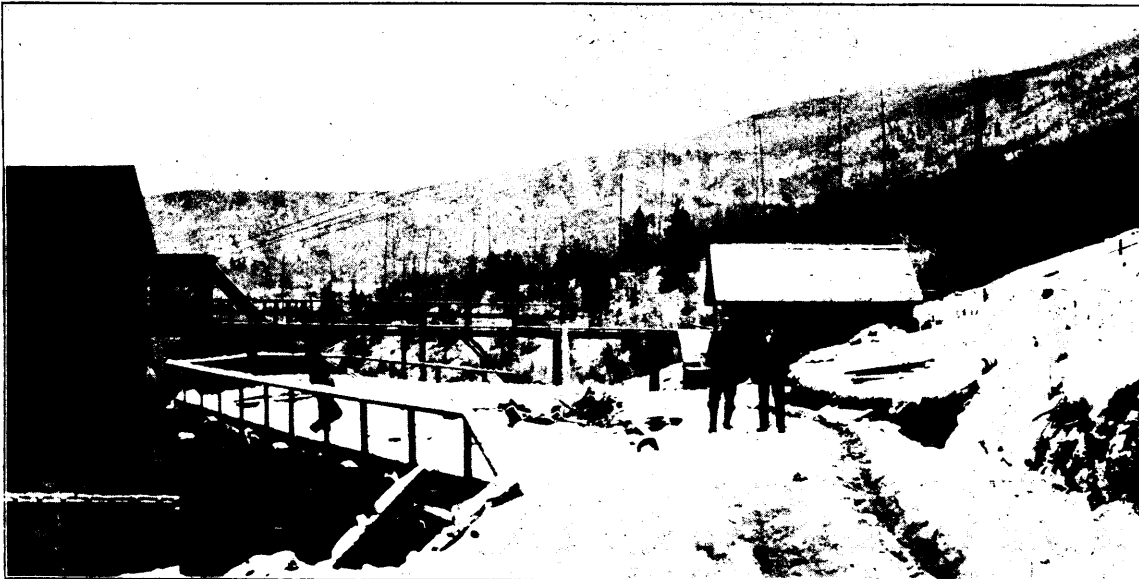


# One Man <sup>Can handle</sup> 1600 TONS <sup>per day with a</sup> Riblet Patent Automatic Aerial Tramway



YOU CAN FIGURE  
THE COST PER TON

More Riblet Tramways are now being  
installed than of all the other  
systems combined

WRITE FOR DESCRIPTION  
AND PRICES

**B. G. RIBLET, ENGR.**

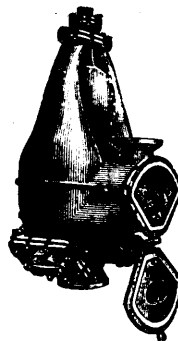
Spokane, Wash., U.S.A.

Nelson, B.C., Canada

## Steam <sup>TRADE</sup> The Pulsometer <sup>MARK</sup> Pump

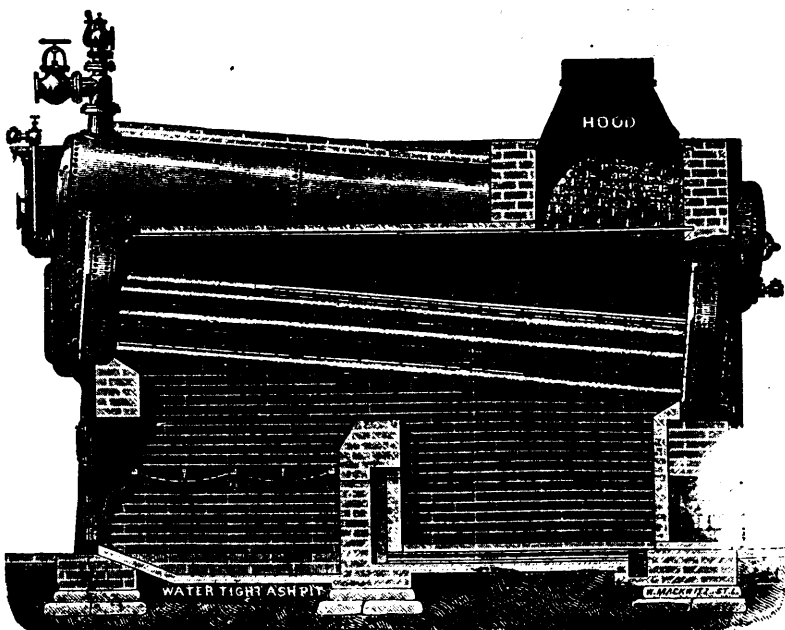
In use all over the world in every industry where pumps are employed. The only moving parts are the simple valves a spare set of which can at any time be fitted by an ordinary borer and the pump made as good as new.

Pulsometer Engineering Co. Ltd., Reading, England



Will pump dirty, gritty water.  
Needs no oil, tallow or packing.  
Will work merely hanging on a chain.  
Has no exhaust steam.

Sole Canadian Representatives  
**PEACOCK BROTHERS**  
Canada Life Buildings MONTREAL



## HEINE SAFETY BOILER

MANUFACTURED BY

**The Canadian Heine Safety Boiler Co.**  
TORONTO, ONT.

**THE HEINE SAFETY BOILER**—Made in units of 100 to 500 h.p., and can be set in batteries of any number. Suitable for Mines, Pulp Mills, Water and Electric Installations, and large plants generally. The best and most economical boiler made.