



# Canadian Northern Ontario Railway

FAST SERVICE TO

# MUSKOKA

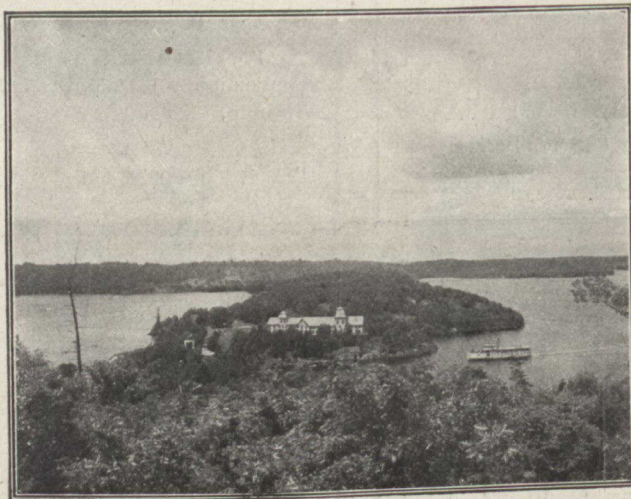
Commencing June 22nd, 1907

## THE LAKE SHORE EXPRESS

LEAVING TORONTO 10.00 A.M.

Arriving:

Lake Joseph, 2.15 p.m.  
 Port Cockburn, 3.00 p.m.  
 Port Sandfield, 3.30 p.m.  
 Clevelands, 4.00 p.m.  
 Royal Muskoka, 4.30 p.m.



PORT SANDFIELD

Arriving:

Bala Park, 1.30 p.m.  
 Beaumaris, 2.15 p.m.  
 Port Carling, 3.15 p.m.  
 Windermere, 4.50 p.m.  
 Rosseau, 6.00 p.m.

Connecting with Muskoka Navigation Company at Bala Park with Steamer Kenosha; at Lake Joseph with the New Palatial Steamer "Sagamo," capacity 800 people. An unequalled service to all parts of the Lakes.

SUNDAY NIGHT SPECIAL commencing July 7th—connecting at Bala Park from principal points. Leaves Lake Joseph 6.35 p.m., Bala Park 7.30 p.m.; Arrives Toronto 11.00 p.m.

## THE SCENIC ROUTE THE SHORT LINE

Solid Vestibuled Trains. Magnificent Parlor Cars.  
 Bouffe Service.

Write for handsome illustrated publication—"Lake Shore Line of the Muskokas."

OFFICES:

Cor. King and Toronto Streets and Union Station  
 C. PRICE GREEN, WM. PHILLIPS,  
 Passenger Agent. Gen. Pass. Agent.

Canadian Northern Building, Toronto



PORT COCKBURN