

the back and is shaped by a seam extending from the point to the front edge; it is perfectly smooth in front, but has fullness at the back arranged in four backward-turning plaits at the

the back and is shaped by a seam extending from the point to the front edge; it is perfectly smooth in front, but has fullness at the back arranged in four backward-turning plaits at the

**LADIES' ONE-SEAM DRESS SLEEVE IN MOUSQUET-AIRE STYLE ABOVE THE ELBOW. (TO BE MADE FULL LENGTH OR ELBOW LENGTH.)**  
(For Illustrations see Page 399.)

No. 1473.—This fanciful sleeve is represented made up in heliotrope nun's-vailing. It is close-fitting and is shaped with only one seam; it is smooth below the elbow but is prettily cross-wrinkled above by gathers at the edges of the seam and at the upper edge. A coat-shaped lining preserves the correct lines. Over the top of the sleeve flares a doubled frill both edges of which are included in the arms' eyes all round; the frill is deepest on the shoulder and upon it a frill-cap of lace edging flares in a decidedly *chic* way. The sleeve may be in full length or elbow length and the lower edge may be plain or in square tabs, a lace frill forming a stylish trimming in any case.

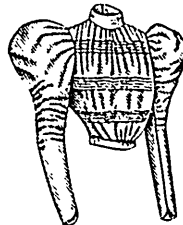
The sleeve will make up effectively in any material that is not too heavy to wrinkle prettily. The doubled frill could be of a contrasting fabric and the upper frill will usually be of lace or chiffon edging. The wrist frill will be of edging to match.

We have pattern No. 1473 in five sizes for ladies from ten to fourteen inches arm measure, measuring the arm about an inch below the bottom of the arm's-eye. To make a pair of sleeves for a lady whose arm measures eleven inches as described, will require two yards and an eighth of material forty-four inches wide, with a yard and seven-eighths of edging six inches and a fourth wide for the narrow caps, a yard and three-fourths of edging four inches and three-fourths wide for the elbow sleeve frills, and a yard and a half of edging four inches and three-fourths wide for wrist frills. Price of pattern, 5d. or 10 cents.

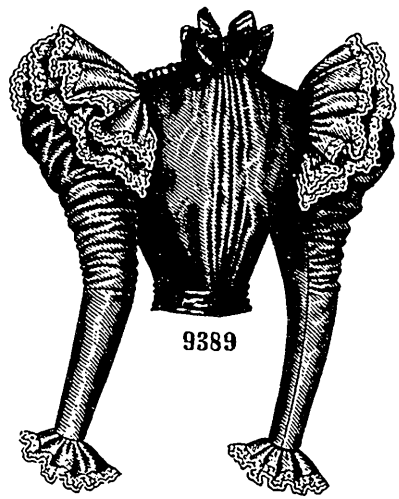
**LADIES' MISSES' AND CHILDREN'S BONNET OR HOOD. (TO BE MADE WITH OR WITHOUT THE REVERS AND CAPE) KNOWN AS THE BROWNIE BONNET.**

(For Illustrations see Page 399.)

No. 1476.—A quaint bonnet or hood known as the Brownie Bonnet is here depicted made of brown broad-cloth with ties of wide ribbon bowed under the chin. It has a close-fitting lining composed of a cap front gathered at its back edge and sewed to an oval crown. The bonnet rises to a high point at

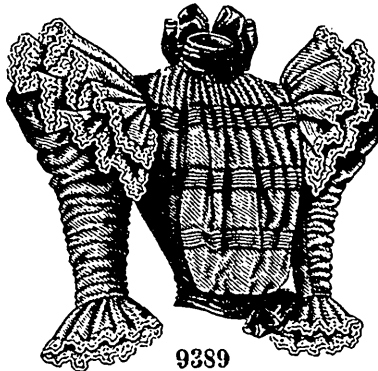


9389



9389

Back View.



9389

Front View.

**LADIES' BASQUE-WAIST, HAVING A TUCKED POUCH-FRONT AND CLOSING AT THE BACK. (TO BE MADE WITH FULL-LENGTH OR ELBOW SLEEVES AND WITH OR WITHOUT CAPS.) KNOWN AS THE ALEXANDRA WAIST.**

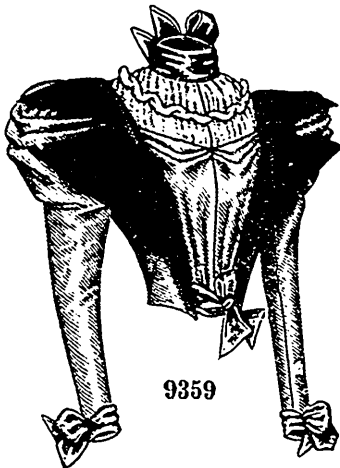
(For Description see Page 386.)

bottom. The bonnet may be made with or without a cape and revers as illustrated, a row of fur furnishing a pretty edge finish when these parts are omitted. The cape is in two sections that are joined by a center seam and ripples prettily; and the revers, which are sewed to the front edge of the bonnet, rise and flare in points at the center of the front.

Velvet, silk and cloth with a ribbon and fur decoration are

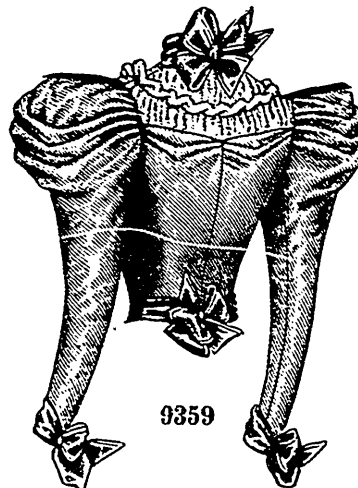
appropriate materials for a bonnet of this kind, which is useful and becoming for wear while sleighing, coasting, tobogganing, skating, etc.

We have pattern No. 1476 in three sizes, for ladies, misses and children. In the ladies' size, the bonnet with the revers and cape will require half a yard of material forty-four or more inches wide, with three-fourths of a yard of silk twenty inches wide for the lining, and a yard and three-fourths of ribbon four inches



9359

Front View.



9359

Back View.

**LADIES' BASQUE-WAIST. (KNOWN AS THE MARQUISE WAIST.)**

(For Description see Page 385.)

wide for the ties. The bonnet without the revers and cape will require five-eighths of a yard of material twenty inches wide, with half a yard of silk twenty inches wide,