

SIMPSON

Store Opens 8 a.m.

Closes at 5.30 p.m.

H. H. Fudger, President.

J. Wood, Manager.

PROBS: Strong E. to N. E. winds; snow, turning to rain.

SIMPSON

### And Now Spring Suits

For Women and Misses are the centre of interest in the Mantle Section

One style in imported English serge and French Panama has a coat 24 to 26 inches long, silk lined throughout; patch pockets and neatly stitched notched collar; skirts cut on correct lines in panel gored and slightly pleated styles.

Colors are navy, tan, black, and grey mixture. A special price for Tuesday . . . . . **10.98**



We have just received large quantities of new spring frocks, daintily designed and trimmed at moderate prices. In fancy silks, foulards, nets, serges, and Panamas.

### Skirts at \$3.98

Are worth more

Of tweeds, light and dark grey, and brown mixtures, cut with six gores, in the new one-sided effect featured this season; finely tailored through-out. Priced for Tuesday . . . . . **3.98**

#### GIRLS' WINTER COATS FOR \$2.50

These Coats were originally priced at \$3.75 to \$4.50. To close them out we offer them at this special price. Made slightly fitting or double-breasted, with turn-over collar, inlaid with velvet or trimmed with black astrakhan; materials are heavier, serge, frieze, and chinchilla cloth; colors, red, green, and brown. 2.50 Ages 6 to 10 years. To clear . . . . .

#### IMPORTED ENGLISH CONDUIT COATS.

Are now on sale in a wide range of materials, at moderate prices. They are fine for general utility wear for spring and summer, and are thoroughly rainproof as well. Made of beautiful homespun, in cream, tan, or blue; fancy tweeds, in green, grey, or tan tones; cravenette, in cream or grey. Cut on mannish Raglan lines, buttoned close, up to neck, with tailored collar and revers, silk-lined yokes and sleeves. Prices range from \$21.50 to \$23.50. Not a handful of styles, but dozens and dozens of Spring Coats, will be found on the Third Floor. Prices from \$9.00 to \$19.75.

#### MISSES' COATS AT \$3.25

Were twice the price. Serviceable Coats, in beaver cloth and serge, cut on close-fitting lines, and are double-breasted, military or turnover collars, and finished off with black braid; colors are navy, brown, and green; sizes 14, 16, 18. Special value . . . . . **3.25**

### Gloves

Men's Tan English Cape Leather Gloves, wool lined, dome fastener, Bolton thumb, strong sewn seams, warm and dainty. Regularly \$1.75. Tuesday . . . . . **.79**

### \$2.00 Umbrellas 95c

Women's Silk and Wool Taffeta Covered Umbrellas to clear, with splendid array of handles, including rolled gold mounted ones. \$1.25, \$1.50, and \$2 lines. Tuesday . . . . . **.95**

### Great Price Attractions in the Carpet Section

Annual Linoleum Sale Now Proceeding

**SPECIAL SQUARES AND MATS**  
Strong, Serviceable Brussels Carpets, yard . . . . . 95c  
Clear-up of English Tapestry Carpets, Tuesday special, yard . . . . . 45c

#### The Spring Annual Sale of Imported Scotch Linoleums

Regularly 35c, 45c, and 50c square yard. Prices, 31c, 36c, and 39c square yard.  
Hard-wearing, clean, and attractive Floor Cloths, in many good designs. 36, 45, 54, and 72 inches wide. Square yards, 25c, 28c, and 32c.  
Canvas-back Stair Cloth, 18 inches wide, 1/2 doz; 2 1/4 inches wide, 17c.  
**BRUSSELS RUGS.**  
Made up from ends of best quality stock carpets. Tuesday special. HALF-PRICE.

### Dinner & Tea Set Specials

Gold decorated Dinner and Tea Sets combined, for 5 people in rich, cream Staffordshire ware, at less than half price. Tuesday . . . . . **1.98**

### A Few Basement Bargains

Union Scales, combination platform and scoop, to weigh up to 240 lbs. Government certificate with each scale. 5.50 Tuesday . . . . .

## At the Simpson Store

are the day's best shopping values, because ---our goods are right in quality, chosen carefully for the most exacting trade, and our prices are as low as we can make them--- lower than seems possible, grade and variety considered. You cannot fail to find some special values in the Store on Tuesday that will appeal to you.

### Just Three Days More of the Black Silk Sale

Tuesday's prices show very marked reductions on high-grade silks. All new reliable silks, permanent dye and finish, and wear well.  
A few of Tuesday's specials:  
Black Satin Paillette, very heavy, closely woven silk, with a clear bright finish, 2 1/2 inches wide. Regular \$1.25, for per yard . . . . . **.97**  
The New Merveilleux Paillette, a beautiful rich finished silk, gives splendid wear. Is 39 inches wide and on sale Tuesday for **1.28** per yard.  
Black Mousseline Duchesse, we have had great demand for this fashionable dress satin. About 200 yards left. 48 inches wide to be cleared Tuesday at yard **1.44**  
Black Duchess Mousseline Satin, an extra fine quality of French manufacture, deep full black. 48 inches wide. Regularly \$2.00 per yard, for per yard . . . . . **1.69**  
C. J. Bennett's Famed Black Silk Peau de Soie, 40 inches **1.84** wide for per yard . . . . .

### The Linens and Staples

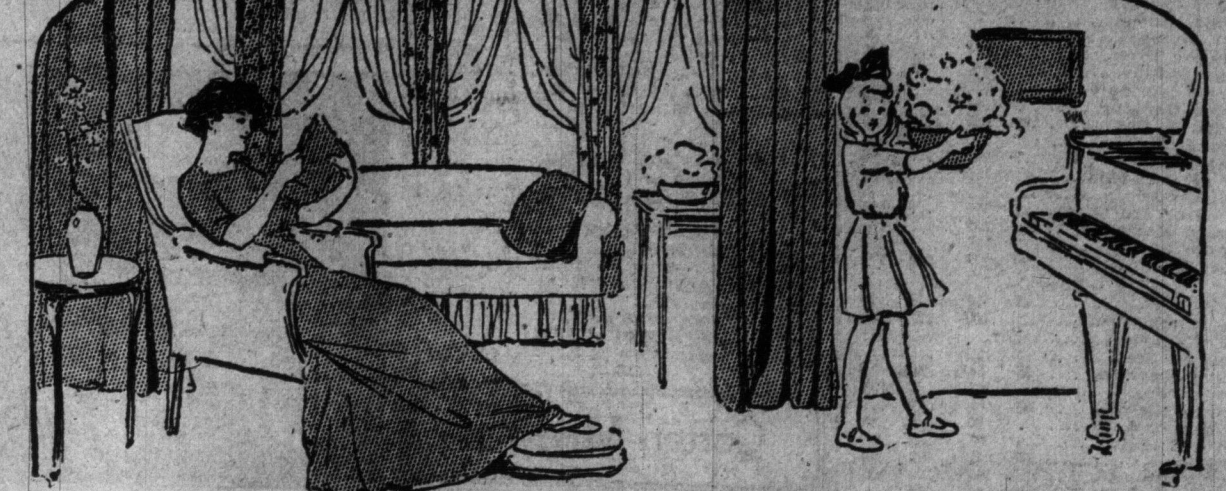
Irish Satin Damask Table Cloths, \$2.48-3 x 2 1/2 yard size, made of pure Irish linen, full, fine, satin damask, as white as snow. The designs are elegant new ones, with deep border. Your choice **2.45** Tuesday, each . . . . .  
Japanese Nainsook, the new underwear cloth---We have just received a shipment of the much-wanted Japanese nainsook for undergarments, cool, dainty, serviceable, 28 inches wide, Tuesday, day, yard . . . . . **.25**  
Our new Galistes at 20c Yard---Just the prettiest stripes for boys' shirts, blouses, wash suits, etc. In deep dye, free from dressing, 37 inches wide. Tuesday, yard . . . . . **.20**  
300 pairs Ready-made Sheets, only \$1.29 pair---3 x 3 1/4 yards, torn from a good, stout, plain bleached sheeting; standard hems, great sheets to wash and wear. **1.29** Tuesday, pair, only . . . . .  
Phone direct to Linen Department, second floor.

### "La Deesse" Corsets at Half-Price

These Elegant "Deesse Corsets" are priced regularly at four dollars a pair, and are only offered at this great reduction as an introductory inducement to come and see the many new styles. Three hundred pairs will be marked at less than half. Come Tuesday.  
Miss Hendricks, the noted corset authority, will be pleased to advise you about correct corsetting. Her services are free to you.  
Introductory Corset Offering---300 pairs Beautiful "La Deesse" Corsets, in latest new spring model, in finest French coutil, white only; medium low bust; long, unboned skirt, fitted with three pairs wide-filled elastic supporters; finest rust-proof steels, four wide side steels; deep, handsome lace and ribbon, with large bow, bust draw cords; sizes 18 to 34 inches. **1.95** Regularly \$4 a pair. Tuesday, a pair . . . . .

### Special in Pencil Stripe Suitings

2,500 yards of this popular suiting, imported from a leading English maker of this class of goods, made from pure, clean, bright yarns, which give it nice, lustrous appearance. We show it in black ground with white stripes, navy ground with white stripes, and cream ground with black stripe. A guaranteed cloth for hard wear. 44 inches wide. Yard . . . . . **.65**



### The Opening Display of New Printed Cretonnes and Colonial Drapery Fabrics

The Drapery Department prepares for your needs of the coming spring by a splendid opening display of the new, light drapery fabrics.  
1912 is the year of printed draperies---the vogue of the Cretonne, beginning with the opening of the 20th century---culminates in the lavish display of this spring of 1912. Nothing in coloring, in richness of appearance, in the production, or reproduction of the rare prints of the 18th century---for use in bedchamber, in living-room, in library, or in the drawing-room, is wanting in our opening display.  
Bedroom Draperies, for overcurtains and loose covers. Providence Taffetas, in gold, blue, green, 45c, rose, and grey. The price, yd. . . . . **.45**  
See Our Display of Bedroom Draperies in the Window Tuesday.  
Living-Room Fabrics---For curtains, portieres, chair covers. Empire Taffetas, in perfect reproductions of the fine old English hand-blocked prints of the early Victorian period, not as you would expect---at 35 and 35.50 yard---but at a price that is almost as interesting as the fabric itself. **.60** price, yard . . . . .  
See This as a Willow Chair Cover in Our Window Display on Tuesday. Library Curtains---Chintzes and Cretonnes, in the rich, strong colors, showing the new black ground, which is so popular in New York City. The price, yard . . . . . **.40**  
See These as a Library Window Treatment in Our Window Display on Tuesday.  
For the Drawing-Room---Shadow-Printed Cretonnes and Repps, for slip covers; as delicate and beautiful as the French or German warp prints, at a fraction of the price. The yard . . . . . **.50**  
See This Used as a Slip Cover in Our Window Display on Tuesday.  
Printed Stripes---All colors, showing the new solid color border effects, which are effective, as well as inexpensive. The price, 30 yard . . . . .

## The SIMPSON Company Limited

### Metal Bedsteads

Specially LOW-PRICED for quick selling Tuesday. Each and every one a bargain.

Brass Bedsteads, Regularly \$11.95, Tuesday, special . . . . .	<b>8.75</b>
Brass Bedsteads, Regularly \$18.90, Tuesday, special . . . . .	<b>14.85</b>
Brass Bedsteads, Regularly \$23, Tuesday, special . . . . .	<b>17.50</b>
Brass Bedsteads, Regularly \$26, Tuesday, special . . . . .	<b>21.00</b>
Brass Bedsteads, Regularly \$42, Tuesday, special . . . . .	<b>31.50</b>
Iron Bedsteads, Regularly \$2.45, Tuesday, special . . . . .	<b>1.65</b>
Iron Bedsteads, Regularly \$4.75, Tuesday, special . . . . .	<b>3.55</b>
Iron Bedsteads, Regularly \$5.50, Tuesday, special . . . . .	<b>4.35</b>
Iron Bedsteads, Regularly \$9.50, Tuesday, special . . . . .	<b>6.75</b>
Iron Bedsteads, Regularly \$10.35, Tuesday, special . . . . .	<b>8.35</b>

### Shower and Waterproof Coats for Men

Waterproofs will be in greater demand this season than ever, and our new stock never was more complete with the best garments from all markets. The presto style collar will be one of the leaders this season, both in Cravenette and in Paramattas.  
All Paramattas are guaranteed to be absolute waterproof, and are made after the very best methods.  
A light brown English Paramatta double-texture cloth, single-breasted; a good, long coat, lots of room, the two-way Presto collar; **10.50** thoroughly waterproof . . . . .  
**WATERPROOF COAT.**  
Made from a greenish fawn, double-texture Paramatta cloth, is guaranteed to be absolutely waterproof; single-breasted, with Presto collar; long and roomy. Price . . . . . **12.00**  
The cut of another Waterproof is the popular single-breasted motor, that buttons to the chin, with close-fitting collar, draw straps on sleeves. Made from a fine English Paramatta cloth, double texture, securely-sewed seams, and well ornamented. **15.00**  
Our Finest Men's Paramatta Waterproof is a heavy double-textured, green-fawn cloth, in the motor style, to button to the chin, with close-fitting velvet collar, English Raglan shoulders, lapped and stitched seams; everything the finest about **18.00** this cost. Price . . . . .  
**MEN'S CRAVENETTE RAINCOAT.**  
This Shower-proof Coat is made from a grey and brown fancy stripe English cravenette cloth, single-breasted style, with Presto collar; good linings; long and with lots of room; very **15.00** best tailoring. Price . . . . .

### 1,000 Shirts at \$1.00

This tremendous sale stock of Shirts must be sold within one week. Each year we arrange for materials of splendid quality to be made into the Simpson Special Shirt, to sell at \$1.00. There are chambrays, French percales, Madras cloths, solistes, and seprats; all new styles and good designs; large, roomy body; negligee or outing styles. You can be sure of absolute satisfaction in point of wear and fit, quality of material, 1.00 and exclusiveness of design. Sizes 14 to 18. Tuesday, at each . . . . .

### Two Interesting Boot Items

**Men's Goodyear Welted Boots, \$2.49**  
1,800 pairs Men's High-Grade Goodyear-Welted Boots, "McCready," "Ames-Holden," and other standard brands. The leathers are gunmetal, patent calf, vic kid, kangaroo, tan Russia calf, and box calf; made on all the popular and up-to-date lasts; button, Balmoral, and Blucher; single, double, and heavy triple thick soles; sizes 5 to 11. The regular standard prices for these boots are \$3.50, \$4, \$4.50, and \$5.00. Tuesday, all one price . . . . . **2.49**

### Women's Boots, \$2.49

760 pairs Women's High-Grade Boots, button and Blucher styles; Goodyear welt, flexible, McKay, and hand-turn soles; high, medium, and low heels. Including 100 dainty model pairs "Queen Quality" samples. The sizes are 1 1/2, 2, 3, 4, 5, 6, 7, 8, 9, 10, 11, 12, 13, 14, 15, 16, 17, 18, 19, 20, 21, 22, 23, 24, 25, 26, 27, 28, 29, 30, 31, 32, 33, 34, 35, 36, 37, 38, 39, 40, 41, 42, 43, 44, 45, 46, 47, 48, 49, 50. Tuesday . . . . . **2.49**

### Groceries

One car Standard Granulated Sugar . . . . .	17 lbs. \$1.00
Choice Picnic Hams, 6 to 8 lbs. each, per lb. . . . .	.12
Lake of the Woods Five Roses Flour, quarter-bag . . . . .	.53
German Lentils for soup . . . . .	2 lbs. .15
Choice Pink Salmon, per tin . . . . .	.13
Premium Oats, large package . . . . .	.23
Pure Kettle Rendered Lard, per 5 lbs. . . . .	.47
Finest Messina Lemons, per doz . . . . .	3-lb. pail .14
Pure Gold Quick Tapioca, Chocolate and Custard Powders . . . . .	.25
Canned Yellow Peaches, in heavy syrup, large tin . . . . .	.25
500 lbs. Fresh Ginger Snaps . . . . .	3 lbs. .25
Edwards' Evaporated Soups . . . . .	6 packages .25
Finest Feathering Coconut, per lb. . . . .	.11
So-Clean Sweeping Compound, per pail . . . . .	.23

For Sale--\$8.50  
Wm. Williams  
28 King Street

### Rip V

What would your governors were on? That's the case. Questions of the moving. The case shown them over if. Here is the veridical in order to get of the legislature. W of the hidden hand, a thing back until it is Telegram. The Star pressing for anything. Take the quest suburban or radial secure single fares, get from the Toronto as possible, AND N he die all this in d commission be reo power to deal with raise money, say to commission would engineer and a cred we do not even kn city to ask for. Next take ann of water supply, u manufacturers are can neither see city workmen in the su A single, short onto, and then the running west from Toronto. But the case, to get the pr When people, i into Toronto, ask t city taxes---they are And yet Toronto i There are papers i we have not struck a bid in a stock of s Toronto's future ar Where are the? Where's the board Wiskie cocktails th

### HE COULD SEE TREAT

John A. Campbell, Guard at the Normal School, Madavit Regarding Treatment---Governments Dr. Bruc Conduct an Under Oath.  
John A. Campbell, 35 formerly a guard at Normal School, but who short time ago because could no longer bear to be treated as wild beast, made a sensational declaration regarding some of the children of the Normal School. Where he could remember supplied them. He ple as to the truth of his st is his declaration: Dominion of Can- In th ada, Province of Ont., Ontario, County tel of York. To wit: I, John Alexander Campbell, of the City of Toronto, do so that I was employed as a teacher in the Normal School, Nov. 22, 1911, till Feb. 1, 1912. At that time I was in charge of the Normal School, and acted as instructor along. While I was there

### GOOD ROADS WAS B

Four Million Dollars to Speakers at County Roads One-Quarter Benefited.  
Mayor Geary found the principal hall filled by the Good Roads Convention, which arrived yesterday afternoon a third time a civic war. Major Kennedy of D.D. the association, called to order at 11:15 for the session. There were then Col. Farwell, Whitby; Coleman, Township; J. E. den of County of Hald; Warden of Peel; J. G. County; J. G. Howe, W. ship, Waterloo County; ton, Lorne Park, Co. James Curry, Burnham of Peel; B. H. Jupp, Co. Orillia; Richard Spratt, leton; Wm. R. Cunn J. A. Sanderson, Leeds G. S. Beck, Brantford; Rowan; W. H. Pugsley President.

After registering the luncheon as the guests Kennedy. At two o'clock the pre annual address. He ex cation that the federal government had recog