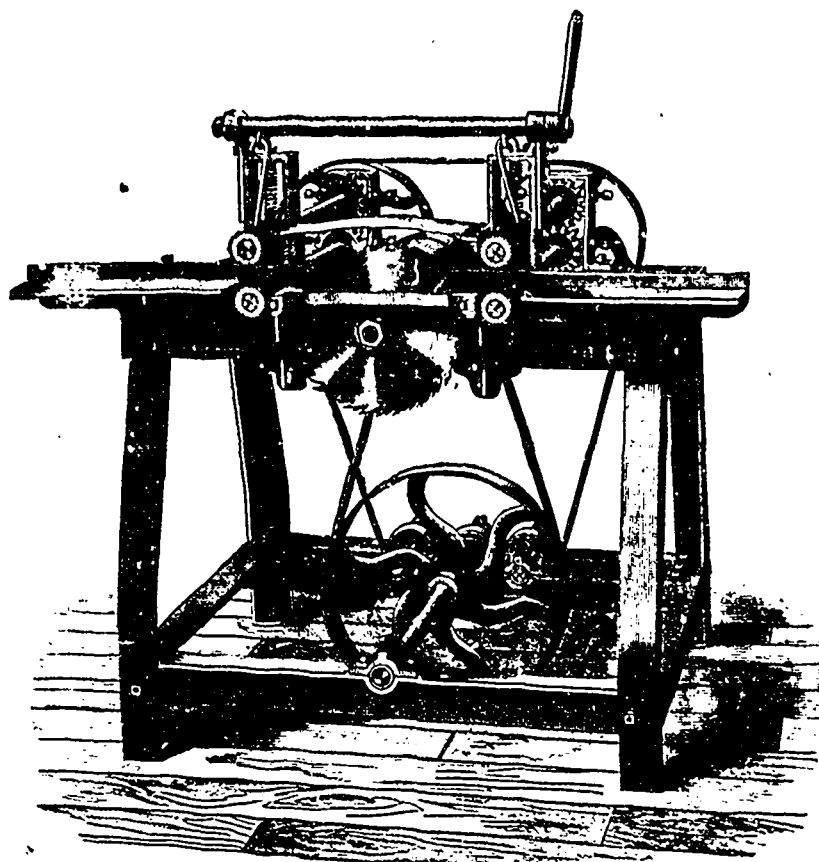


GANG LATH MACHINE



This machine carries four 12 inch saws, and is fitted throughout for continuous, fast work. The frame is a solid iron casting with long bearings for saw arbor cast in place. So it is impossible for the arbor ever to get out of line. The drive pulley on arbor is 8 inch dia., 9 in. face, turned inside and out and firmly balanced.

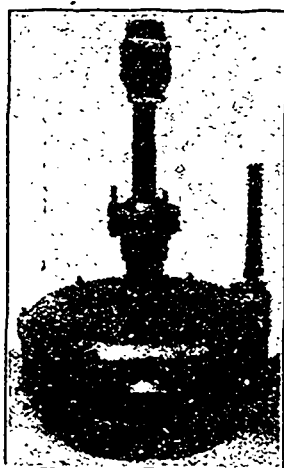
This machine in connection with the Lath Bolter—its companion—is capable of turning out an immense amount of work every day, probably more than any other machine in the market at the same price.

I also make other very heavy fast cutting Lath Machines and Bolters and guarantee them in every particular. I sell cheap too.

Send for Catalogues

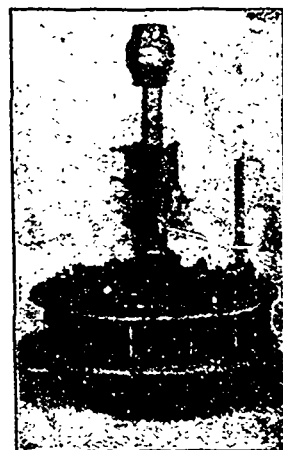
F. J. DRAKE, - Belleville, Ont.

Do You Need a Turbine?



Now is the best possible time for replacing your old, worn-out wheel with a new Turbine that will save Worry, save Time, and make Money for you. If you want a well built wheel, a wheel that will give you steady reliable power every day, a wheel that will save water, a wheel that will last you a lifetime, and that is sold at a reasonable price, then write us for catalogue and prices on the

Standard Leffel and Vulcan Turbines.



They are better developers to-day than ever before, and are growing in popularity, as our order books show.

We have now for distribution our new **SAW** and **SHINGLE MILL MACHINERY CATALOGUES**, with engravings and descriptions of our machines with their latest improvements. We will be glad to send you one on receipt of your address. You cannot buy a better Portable Mill than the "Lane Improved".

MADISON WILLIAMS, PORT PERRY, ONT.

H. E. PLANT, Agent,
Cor. Common & Nazareth Sts., MONTREAL.

SUCCESSOR TO
PAXTON, TATE & CO.

Winnipeg Machinery & Supply Co.
Western Selling Agents, Winnipeg