

EXPANSION CORRIDOR GATES, TODMORDEN SCHOOL.

until the other end is securely attached to the fixed hook on the wall outside.

For higher floors the provision of an escape or ladder is advisable.

Frequent drills in the use of exit appliances are essential, and should be under the supervision of selected members of the staff, specially appointed and instructed in the method of removing the pupils.

Where there is a sanatorium an adequate number of the staff should be permanently told off for the safe removal of the patients. If the sanatorium is a detached building the "Suggested Precautions for Hospitals" might apply.

*Extinguishing Appliances.*—Schools should be provided with a suitable fire plant; this may consist in the first place of chemical extinguishers of simple construction, fire buckets or hand-pumps, placed in conspicuous positions throughout the building. The water in hand-pumps or buckets should be frequently changed, and extinguishers periodically recharged, to ensure their being instantly ready for use.

In laboratories especially, the chemical extinguisher will be found most serviceable, as fires arising from oils, spirits, and like inflam-

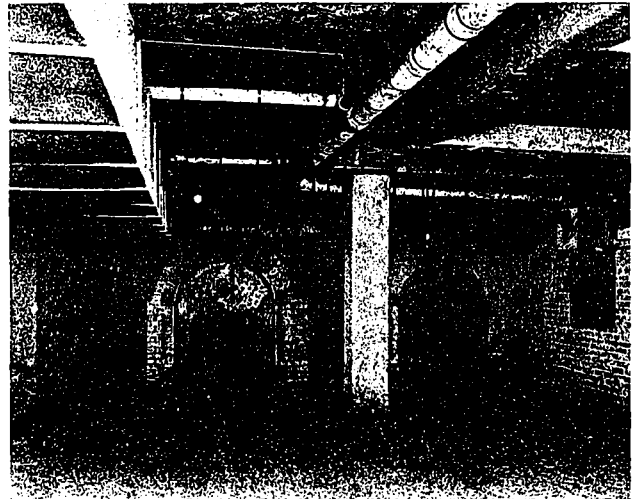
mables should not be attacked with water. Bins (with scoops) containing sand, asbestos sheeting, heavy sacking, or like material for smothering the flames should be kept at hand where chemical and other experiments are conducted.

In schools where a supply of hydrants with water under requisite pressure is not available, some form of engine is desirable.

Where indoor hydrants are provided, they should be fixed in such positions as not to interfere with or be in the way of clearing the building of its occupants. The hose (flaked or coiled from centre, with branch-pipe attached, and connected with the hydrant) should lie in a swinging cradle hung up in such a position as to ensure it being safely and easily run out.

The person discovering the fire should at once sound the fire alarm and summon, or cause to be summoned, the local fire brigade, then get to work as follows:—

With hydrants, if single-handed, take branch,



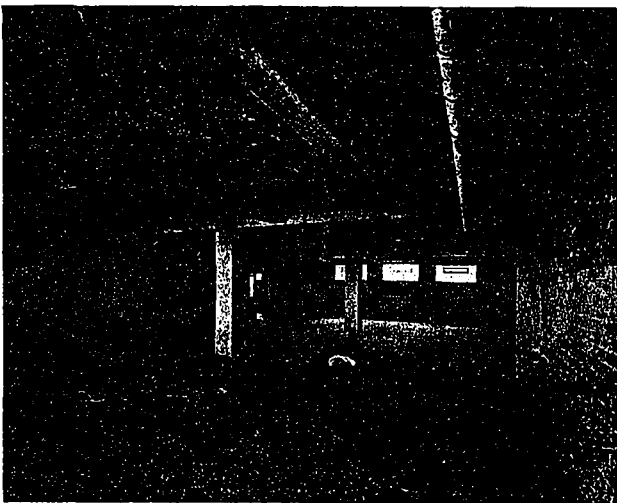
BOILER ROOM, TODMORDEN SCHOOL.

run out the hose in the direction of the fire, lay branch back on the hose and return to hydrant, turn on water, hurry forward, pick up branch, and attack fire.

With short length of hose the water may be turned on at the time of taking the branch, but this method should only be adopted by experienced hands.

When two persons are available, one should take the branch and run out the hose; the other stand by the hydrant to turn on the water when all is ready.

There is a grave source of danger in locked-up store-rooms and cupboards, and it is most essential that an automatic alarm be installed in each such store, in order that a fire may be detected in its initial stages, and extinguished before it attains large proportions and causes a great amount of smoke to accumulate, which will sooner or later permeate the building, creating alarm and danger of suffocation.



BASEMENT PLAYGROUND, TODMORDEN SCHOOL.