

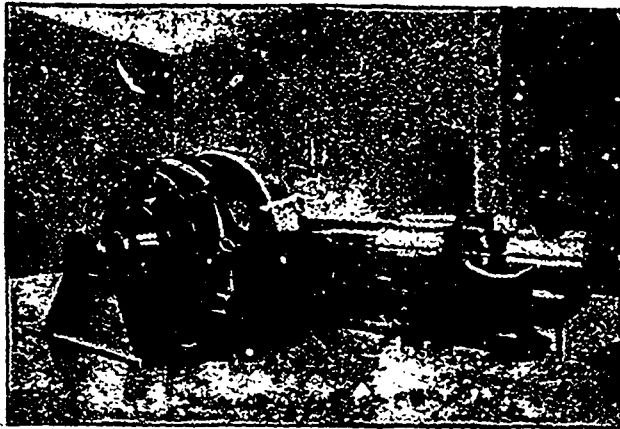
IDEAL HIGH SPEED ENGINES

PERFECTION IN HIGH SPEED ENGINE DESIGN, NOISELESS RUNNING,

PERFECT LUBRICATION

ACCESSIBILITY

ECONOMY



ASK FOR BULLETIN No. 6

QUOTATIONS CHEERFULLY GIVEN

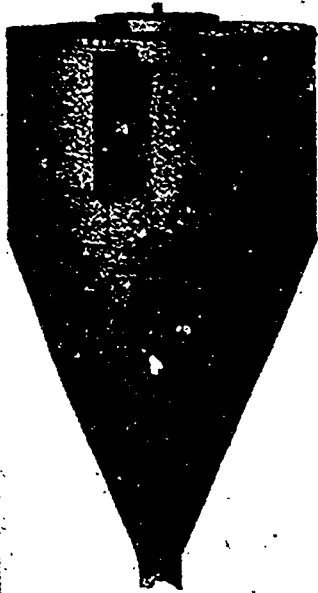
THE GOLDIE & McCULLOCH CO., LIMITED

GALT ——— ONTARIO ——— CANADA

WE MAKE Wheelock Engines, Corliss Engines, Ideal Engines, Boilers, Pumps, Flour Mill Machinery, Oat Meal Mill Machinery, Oat Meal Steam Pan Kilns, Wood Working Machinery, Iron Pullers, Wood Rim Split Pulleys, Shafting, Hangers, Gearing, Friction Clutch Pullers, Friction Clutch Couplings, etc., Safes, Vaults and Vault Doors. Write for Catalogue.

Western Branch: 248 McDermott Ave., Winnipeg, Man.

Quebec Agents: ROSS & GREIG, Montreal, Que.



Shaving Systems

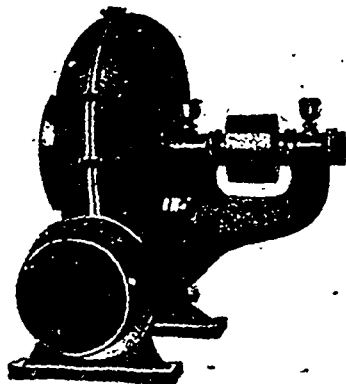
Fans, Separators and Piping Installed.

Trucks

Steel Roller-Bearing Trucks and Transfers, also Wheels and Bearings for Wood Frame Trucks.

Moist Air Kilns

Write us for full particulars. We install Force and Natural Draft Kilns of latest design.



FANS
CUPOLA FANS
BLOWERS
EXHAUSTERS
BRICK CARS
TRANSFERS AND DRYERS

Dominion Heating & Ventilating Co., Limited

HESPELER, CANADA.

Successors to McEachren Heating and Ventilating Co.

When writing to Advertiser kindly mention THE CANADIAN MANUFACTURER.