

Woodworking Machinery

The line of Wood-working machines made by The Goldie & McCulloch Co., Limited, Galt, Ont., are in great demand. They build an extensive range suitable for almost any kind of wood-working establishments. Their machines are built very heavy and made to stand very hard and continuous work. Send for a catalogue, address

WE MAKE Wheelock Engines, Ideal Engines, Gas and Gasoline Engines, Rollers, Water Wheels, Pumps, Flour Mill Machinery, Oat Meal Mill Machinery, Oat Meal Steam Pan Kilns, Wood Working Machinery, Iron Pulleys, Wood Rim Split Pulleys, Shafting, Hangers, Gearing, Friction, Clutch Pulleys, Friction Clutch Couplings, etc., Safes, Vaults and Vault Doors.

THE GOLDIE & McCULLOCH CO., Limited
GALT, Ont., Canada.

LEONARD - CORLISS Engines

For all power purposes.

The **CORLISS ENGINE** is without question the most economical. Universally acknowledged as the peer of all slow speed engines. All Engines have multiported valves.

The **PEERLESS Self Oiling ENGINE** is the most perfect high speed engine in existence, there is nothing about the engine which has not been a proved success.

Boilers for all powers and purposes. **Heaters, Pumps.**

CORRESPONDENCE SOLICITED.

E. LEONARD & SONS, - Manufacturers
London, Canada

Montreal, P.Q. Winnipeg, Man. St. John, N.B.

THE WELLINGTON MILLS London, England.

GENUINE EMERY

Oakey's Flexible Twilled Emery Cloth.

Oakey's Flint Paper and Glass Paper.

Oakey's Emery Paper, Black Lead, Etc.

Prize Medal and Highest Award Philadelphia, 1876, for Superiority of Quality, Skillful Manufacture, Sharpness, Durability, and Uniformity of Grain.

Manufacturers

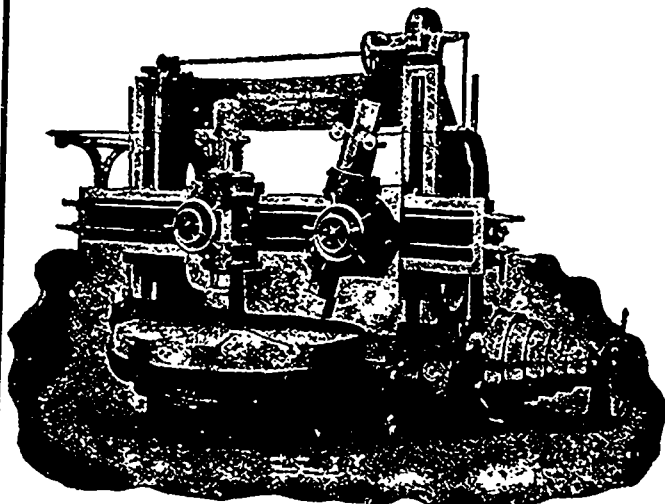
JOHN OAKY & SONS, Limited, Wellington Mills, Westminster Bridge Road, London, Eng.

Enquiries should be addressed to

JOHN FORMAN, - 650 Craig St., MONTREAL

IMPORTANT BORING and TURNING MILLS

TO USERS OF



NOTICE—The above mill can be seen at our Works and is of the **latest modern type**. If you are a buyer please communicate with us. **Instant delivery** can be given. Full particulars sent on receipt of wire or letter.

WE are ready to delivery from STOCK one of our 84" Boring and Turning Mills, having two regular heads with positive geared feeds, each head being entirely independent in all its movements, making it adaptable to either light or heavy work within its range. Every part of the machine is manufactured after the most approved methods, and in placing a tool of this kind in your shop you are getting a machine suitable for your wants if you wish to make the most of your boring mill work. A greater range of work can be done on a mill of this character than any other kind of tool, so that the floor space occupied by Bertram mills always pays dividends.

THE JOHN BERTRAM & SONS CO., Limited, - Dundas, Ontario