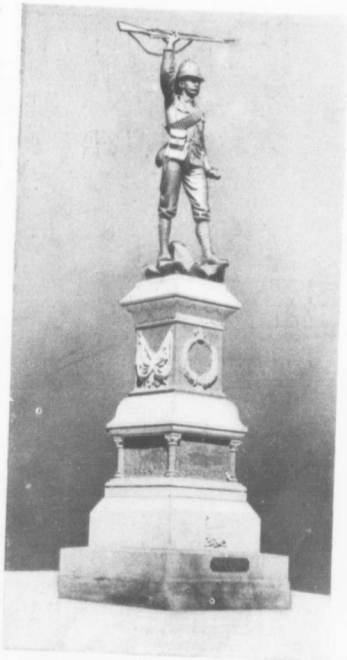


The Eastern End of the Dominion—Sydney,
Louisburg, the Gulf and the Atlantic.

By A. M. PAYNE.

The proximity of attractive localities in the neighboring States has retarded that closer intercourse between the different sections of Canada which would naturally promote a fuller appreciation of points of interest within our own territory. Many Canadians who have passed all their lives in the central provinces have but a faint idea of the satisfaction that would attend a run to the eastern end of the Dominion.

Two or three years ago quite a large body of representative business men from all parts of Canada enjoyed the advantage (within the limit of a few days) of viewing the broad Atlantic from the embrasures at York Redoubt, at the entrance of Halifax harbor, from the Marconi towers at Table Head, Glace Bay,



Monument erected by the people of Nova Scotia to the Heroes of the South African Campaign, at Halifax, N.S.

and, later still, another prospect of the same "unbeginning, endless sea" from the ramparts of Louisburg, where at two sieges, within a little beyond a decade, gallant soldiers of France and beleagured inhabitants strained their eyes seaward looking eagerly for the succor that never arrived.

It is something more than an experience, it is a graduating phase of education for ordinary professional and business man, fresh from the survey of a grand group of collieries and up-to-date steel and iron plants, to turn aside, as it were, for a brief space and take in the significance involved in half-an-hour's intelligent sight-seeing at the ruined



MONUMENT AT LOUISBURG, N. S.
Erected by the Society of Colonial Wars, June 17, 1895,
to commemorate the capture of Louisburg,
A.D. 1745.