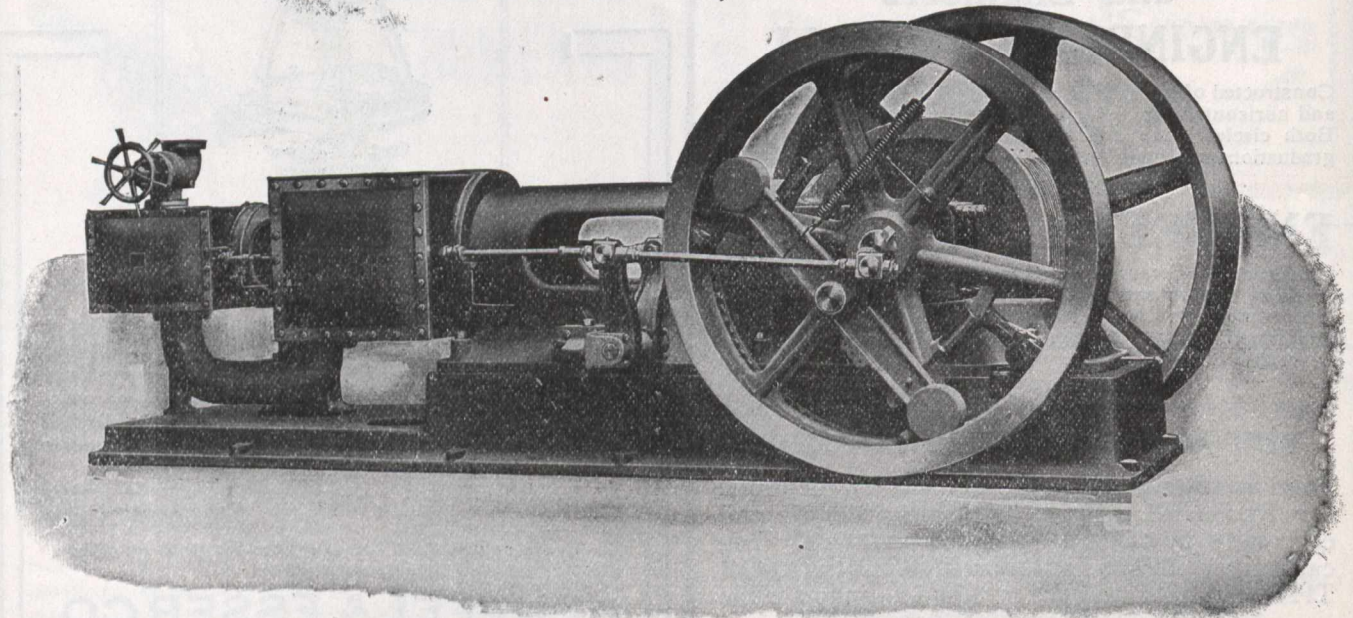


Waterous Engine Works Co.

BRANTFORD, CANADA.



The above cut shows a 19 and 32 by 24 Tandem Compound Automatic McEwen Engine. Four of these are in use in Southern Ontario operating 400 K. W. Generators.

Write for our latest Bulletin and Prices.



FOR ALL MACHINERY BEARINGS

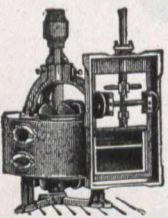
USE

HARRIS HEAVY PRESSURE BEARING METAL

It Is Satisfaction in Babbitt Metal

Manufactured by

THE CANADA METAL CO. Ltd., TORONTO



GEARS

the ordinary way. Mortise Gears recogged. Little Giant Turbine Water Wheels, Turbine Governors and Power Transmission Machinery.

We make a specialty of Machine Dressed Gearing; both wooden cogs and iron teeth accurately machine cut, thus insuring a smooth running drive. Gears finished in this manner will last much longer than when hand dressed in the ordinary way. Mill Cogs furnished with blank face, or having the face ready dressed. Correspondence solicited. Write for Catalog.

J. C. WILSON & CO., Glenora, Ont.

HAMILTON BRIDGE WORKS COMPANY, LTD.

Established 1872 at HAMILTON, CANADA.

BRIDGES—RAILWAY^{AND} HIGHWAY

STRUCTURAL STEEL

5000 Tons of —BEAMS, ANGLES,
Steel in Stock CHANNELS, PLATES, ETC.

Manufacturers of Locomotive Turn Tables, Roofs, Steel Buildings, and Structural Iron Work of all descriptions