

TWO in ONE

is what you have in the

Stratford Rope Extension LADDER

The rope is so arranged that by unsnapping it from the top section the ladder can be separated to form two single ladders.

The hooks automatically lock at every round and unlock between the rounds.

These ladders are strong, light, easily operated, durable, and convenient, a necessity around the house and farm buildings.

Write us to-day for Catalogue H for full description and price

THE STRATFORD MFG. CO. LIMITED

STRAFORD, ONT.
We make all kinds of Ladders, Lawn and Porch Swings and Seats.

Nine new subscribers to Farm and Dairy will win you a pure bred pig.

HORTICULTURE

Renovating Strawberry Beds

F. H. Hall, Geneva, N.Y.

Usually it is better to set new strawberry beds each year than to continue the old ones. The advisability of removing more than one crop of fruit depends largely on the condition of the bed. If the strawberry plants are numerous, vigorous and healthy, and the ground not too weedy, they may be left for a second crop. Two and even three profitable crops may sometimes be harvested before making a change. The berries ripen slightly earlier but average somewhat smaller on the older beds, and the plants are more liable to trouble from insects and diseases. The cost of cleaning out and caring for an old bed is usually greater than for setting a new one. Under some conditions a quick-growing crop maturing before winter may be grown upon the same soil if the strawberry vines be plowed under as soon as the crop has been harvested, or it may be advantageous to sow the ground to a clover cover-crop to be plowed under the following spring.

If the bed be retained for a second crop it will be necessary to clean out, fertilize and replant the rows. Some growers go over the bed with a mowing machine and as soon as the leaves are sufficiently dry burn over the en-

tire field during a wind blowing in the direction of the rows. This must be carefully done or injury may result to the crowns of the plants. Such treatment tends to lessen insect and fungus troubles.

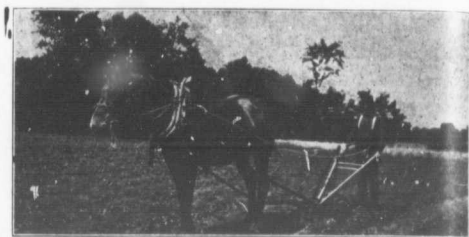
The majority of growers who retain their beds narrow down the old rows with plow, disc-harrow or cultivator to a width of from six to 12 inches, depending on the stand of plants, and cultivate thoroughly to loosen the ground which has become hard and compact from the tread of the pickers. The weeds and surplus plants should be cut out from the rows remaining and a heavy application of plant food, preferably in the

charges up to \$5 a car. The care inspectors employed by the Department will watch the handling of these shipments as usual, and careful temperature records will be obtained at all points.—J. A. Ruddick, Cold Storage Commissioner.

Improve Potatoes by Selection

J. W. Clarke, Brant Co., Ont.

A wonderful improvement in the quality and yield of potatoes can be obtained by careful seed selection. I have been working on potatoes for five years. I started with the Carman and worked to get a good yield, dry, smooth and with full eyes.



The Cultivator at Work in a Renovated Strawberry Patch

This illustration shows Mr. G. B. Pattison, in the Clarkson district, Ont., as he was photographed in August, 1910, cultivating an old strawberry patch after it had been renovated. After the crop was harvested the rubbish was mowed, raked and drawn off the patch. A plow was then used to run a furrow on each side of the rows, which left the rows about eight inches wide. The seuffer was then run through twice, after which the rubbish was shaken up and hauled off, after which the rows were weeded and cleaned. Later in the fall this patch would be hoed again; the cultivator would be used each week if possible to the end of the growing season.

Photo. by an Editor of Farm and Dairy

form of well-rotted stable manure, should be broadcast throughout of the rows and directly over the plants.

Cold Storage for Fruit Shipments

Editor, Farm and Dairy.—Arrangements have again been made with the steamship lines for the operation of cold storage chambers for fruit only on the following steamer:

TO LONDON.

Date. Steamer. Agents.
August 20—"Scyllia".....H. & A. Allan.
August 26—"Aurora".....R. Reford & Co.
Sept. 3—"Corinthian".....H. & A. Allan.
Sept. 9—"Aurora".....R. Reford & Co.
Sept. 16—"Devona".....R. Reford & Co.
Sept. 23—"Albany".....R. Reford & Co.

TO GLASGOW.

August 19—"Hesperian".....H. & A. Allan.
August 26—"Cassara".....R. Reford & Co.
Sept. 2—"Granville".....H. & A. Allan.
Sept. 9—"Saturnia".....R. Reford & Co.
Sept. 16—"Hesperian".....H. & A. Allan.
Sept. 23—"Ionian".....H. & A. Allan.

TO LIVERPOOL.

Sept. 2—"Meganite".....White Star-Dominion Line.
Sept. 9—"Tunisian".....H. & A. Allan.
Sept. 16—"Laurentine".....White Star-Dominion Line.
Sept. 23—"Corse".....H. & A. Allan.
Sept. 30—"Meganite".....White Star-Dominion Line.

TO BRISTOL.

Sept. 6—"Royal Edward".....Canadian Northern S.S. Co.
Sept. 23—"Royal George".....Canadian Northern S.S. Co.

The arrangement is the same as last season made during the past three years. Intending shippers must apply for space to the steamship agents in the usual way. They will be charged the regular cold storage rates. The Department simply gives a guarantee of earnings to the steamship company to insure the operation of a chamber on each of the steamers mentioned in this list.

Shippers are reminded of the arrangement between the Department and the railway companies for supplying ice cars for the carriage of fruit to the railway companies on request of shippers made to the nearest agent, and the Department pays icing

You can hardly see the eyes in my Carman to-day. By planting potatoes of medium size and uniform in shape, we have gradually bred away from small potatoes.

Select the best potatoes only. If the potato is dry, it indicates a lack of starch, and such a potato should be rejected. Very large potatoes are not desired on the market, and are apt to be hollow. By selection of the best types from the best hills, I have produced the kind of a potato that I consider ideal for market purposes.

Now is the time to start to improve potatoes by selection when digging.

Cut out Blight Now

Grant S. Pearl, Halton Co., Ont.

In August blighted portions of fruit trees are readily discernible. The diseased leaves and branches have a wilted and fire-banged appearance and in some cases the branches are devoid of leaves. Also, the bark appears shrivelled and cracked, and is darker in color than healthy stock.

If removed now these infected portions will not act as a source of contamination to the rest of the orchard next spring, nor during the winter pruning operations. There is always danger of carrying the disease germ in the saw, consequently it is furthermore advisable to disinfect the saw each time it cuts a diseased branch. A 10 per cent. formalin solution after satisfaction and does not corrode, or in any way injure the tools. This disinfecting material is most readily carried in a bottle. A swab is made by pushing a wire through the cut into the bottle and cotton wrapped around the wire.

In every case the incision should be made at least from six to 12 inches below the diseased parts of the branch, so as to insure the removal of it all. All these prunings should be destroyed at once by burning. If allowed to lie around the orchard, borers, especially the shot-hole borer, will work in them and eventually carry the disease to the trees again. Thus it is very important that the prunings be burned.

POULTRY

The New Pou

L. C. Smith, P.

Light, freedom from good ventilation are important points to be considered in constructing a house. Convenience are also important in these points are best open front style of

Our farmers exhibit diversity in the erect poultry houses. We get it into our minds, so long as it is needed to be warm, was recently showing new poultry house.

deal of pride he pointed walls with numerous boarded and shingled to the large double

This man had an old, outmoded, but he got results, and why build on the old principle successful, is beyond

near neighbors who have seen his poultry last year in a structure one side no protection a spruce hedge, and

We ourselves are using a type house, but we front out and substituting, and it is giving

We are building a new open front poultry house on three sides are covered with building out the draughts. This

is about three feet two feet of wire netting length. This house from draughts and, dry. From our experience renovated old house good results from our

Lice and Lice

C. E. Brown, Univers

The two most common which affect chickens are the common lice, comparatively easy to control where the chicken is with a good supply of the dust or shallow dust or fine coal ash breathes through tiny

side of its body and wadding herself these become filled and the to death.

The mite is different as it breathes through the dust or on a little or no effect on rarely stays on the h daytime, preferring to cracks and crevices of the house returns to a pile of the best plants in this pest is to fumigate with sulphur or fumig

The hens must first be in the windows and doors, then smoke the building for at least three hours be repeated once or twice at intervals of three or four days to catch the mites that

FOR SALE AND WANT

TWO CENTS A WORD CASE

HARDWOOD ASHES—See

Mr. George Stevens, Pe

FOR SALE—First-class inc

berry, and brooder.

Farm and Dairy.

FOR SALE—Iron Pipe, P

Kills, Chain Wire Fence

etc. all sizes, very cheap

stating what you want.

Steel and Metal Co. Ltd.

St. John, N. B.

St. John, N. B.

St. John, N. B.

St. John, N. B.

St. John, N. B.

St. John, N. B.

St. John, N. B.

St. John, N. B.

St. John, N. B.

St. John, N. B.

St. John, N. B.

St. John, N. B.

St. John, N. B.

St. John, N. B.

St. John, N. B.

St. John, N. B.

St. John, N. B.

St. John, N. B.

St. John, N. B.

St. John, N. B.

St. John, N. B.

St. John, N. B.

St. John, N. B.

St. John, N. B.

St. John, N. B.

St. John, N. B.

St. John, N. B.



WHAT! They Need Painting Again?

Lets Buy

Amalite
ROOFING
It Needs No Painting

AMALITE has a real mineral surface; it needs no paint to protect it. In rain and sun and snow and hail, Amalite takes care of itself. It needs no coddling—there is no maintenance cost. You lay it and leave it.

The mineral surface is durable, permanent, absolutely weatherproof, unaffected by climate, insoluble in water, not injured by smoke.

Amalite is easy to lay. No skilled labor is required. You simply unroll it on the roof, and nail it down with nails which we supply to you. Cement the laps with the adhesive cement which we also supply free packed in the center of the roll.

Amalite costs no more than the kind of roofings that require constant painting. You get twice as much weight of roofing for your money as you do with other roofings.

Sample free on request. Address nearest office.

Everjet Elastic Paint

Save money by using this black paint wherever the color is no objection. Elastic, heat-proof, durable. Use it for roofings and all exposed iron and wood.

Creonoid Lice Destroyer and Cow Spray

Spray the hen house regularly with Creonoid to kill disease germs, repel insects, suppress odors and prevent the spread of contagion. Sprayed on cattle it keeps the flies away, and the cows thus protected produce more milk on this list.

THE PATERSON MANUFACTURING CO., Limited

Montreal Toronto

St. John, N. B.

Winnipeg Vancouver

Halifax, N. S.