

A Truck for the Farmer

FARM equipment which will effect a time and labor-saving, and therefore a money-saving, must be carefully considered by every good farmer now-a-days.

The farm wagon, which for years was the most useful of all farm equipment, is now being replaced on the best farms by a sturdy, dependable motor truck. The truck will haul any farm product—fruit, grain, vegetables, stock, fertilizer, or wood—around the farm, or to the town or city many miles distant, in half the time, and at a much lower cost.

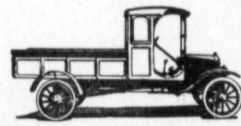
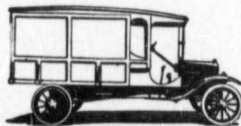
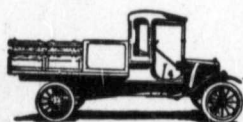
The Ford One-Ton truck is a rapid, economical and very serviceable means of transport. One of these on your farm will save you weeks of time in a single season and will enable you to pass through a crisis of labor shortage with less difficulty.

The Ford truck is supplied as a chassis only. This permits you to select any of the many body styles especially designed for the Ford truck and already on the market. Thus you can mount the one which suits your individual requirements.

Price \$750 f.o.b. Ford, Ont.

See any Ford Dealer in Canada, or write for a catalog

Ford Motor Company of Canada, Limited
Ford, Ontario



Three of the many body styles that may be mounted on the Ford truck chassis