

The
E. B. Eddy Co., Limited



PARLOR Hull, Canada MATCHES

DON'T
Experiment
with other
and inferior
brands,

Use
EDDY'S

OUR BRANDS

"King Edward" 1000s
"Headlight" 500s
"Eagle" 100s and 200s
"Victoria"
"Little Comet"

For Sale Everywhere.

CHAMPION EVAPORATORS...

Save Your Fruit

and dry it with
**Champion Fruit
Evaporator**



Dries all kinds of fruit and vegetables, producing a superior quality of clean white fruit. It is made of galvanized iron, is lined throughout with asbestos, is fire proof and portable. Made in five sizes. Catalogue for the asking.

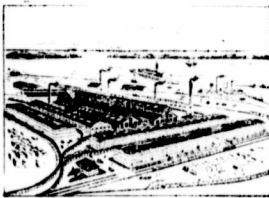
THE GRIMM MFG. CO.,
84 Wellington St., MONTREAL

DEERING IN CANADA.



DEERING agencies are located in every important agricultural town in Canada.

DEERING machinery is recognized as standard in every agricultural community.



Hamilton Works.

DEERING has established a permanent home in Canada at Hamilton, Ont., where the finest equipped factory in the Dominion is being rapidly pushed to completion.

DEERING is in better position than ever to supply its Canadian patrons with the famous lines of

Deering Light Draft Ideal Harvesters

AND
Deering Tillage & Seeding Machines

DEERING DIVISION:

International Harvester Co. of America, Chicago, U.S.A.

Canadian Branches: London, Toronto, Winnipeg, Montreal

WILSON'S HIGH-CLASS SCALES

SPECIAL PRICES THIS
MONTH

On 2,000 lb.

**Diamond Steel Bearing
SCALES**

Write To-day.

**C. WILSON
& SON**

50 Esplanade St. E., TORONTO, ONT



**The Best
Advertising
Proposition**

**In Eastern Canada--Bar-
ring no Paper--is the**

MARITIME FARMER.

It is used by all the leading Ontario manufacturers selling goods in the Maritime Provinces. Many of them have been in its columns since the first issue, seven years ago. That's the best proof we can offer that

IT PAYS.

For full particulars address

THE MARITIME FARMER.

Sussex, New Brunswick

Ideal Milk Ticket

THE old-fashioned pass book has been discarded by every up-to-date factory.

The Ideal Monthly Statement Card has taken its place. It is made of stout Manila, and can either be delivered by the milk hauler or sent to the patron in an ordinary envelope. On back of card rules are given for "The Care of Milk." The Cards are now ready; order early.

Price: 25c. for 100; or a package of 1,000 for \$2.00, post-paid.

A factory of 100 patrons will require from 800 to 1,000 tickets during the season.

Address: THE FARMING WORLD,

Confederation Life Building, Toronto