

THE COMMERCIAL

FINANCE AND INSURANCE REPORT.

Subscription, \$2.00 per Annum in Advance.

Established 1882.

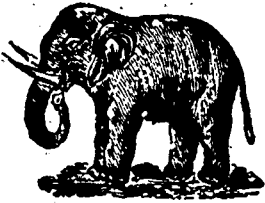
Published Weekly.

Vol. 19

WINNIPEG, CANADA, JANUARY 26, 1901.

No. 21

Elephant White Lead and Paints



Have been well known brands for forty years, the same ingredients being used in the manufacture now and continuously during all those years. Experience in making paints for nearly half a century is at your service.
IF YOU ARE NOT SELLING ELEPHANT GOODS, YOU ARE NOT SELLING THE BEST GOODS MANUFACTURED TO-DAY.

MERRICK, ANDERSON & CO.
Sole Consignees, Winnipeg

FLOUR

HIGHEST AWARDS at home and abroad:
WINNIPEG EXHIBITION, PARIS EXPOSITION.



The Flour manufactured by the Hudson's Bay Company from specially selected wheat has received the Grand Prize at the Paris Exhibition, also the highest awards at the Winnipeg Industrial Exhibition.

HUDSON'S BAY CO'Y

MANUFACTURERS OF

Denim Pants, Overalls, Shirts and Smocks

of all descriptions.

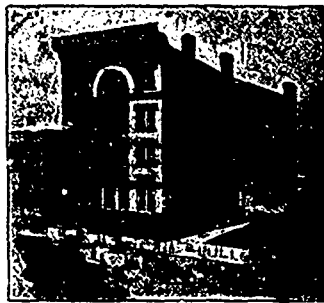
Small Orders receive Prompt Attention.

EMERSON & HAGUE

WINNIPEG

CODVILLE & CO.

Wholesale Grocers



—Packers of—

CELEBRATED GOLD STANDARD TEAS
Coffees, Baking Powder and Spices.

BANNATYNE AVE. E., WINNIPEG.
Branches: BRANDON and CALGARY.

BROMLEY & CO.



Tents
Awnings and
Mattress
Factory

Cor. Princess and Alexander St., Winnipeg

WHOLESALE SMALLWARES
FANCY GOODS, TOYS, and GENTS' FURNISHINGS

Stock complete in all departments.

J. McLEOD HOLIDAY
173 McDermott Street.

DIRECT EXPORTER OF SENECA ROOT

WORK SHOES

Why not wear the best?

Sole Agent for the Famous Double Stitched Sole Shoe.

The most comfortable, best wearing every day shoe on the market. Easy on the feet and durable. The uppers are made of soft oil grain, and soles double stitched. We stand by every pair of them. Only \$2.00 a pair. Read what dealers say about this boot. Williams & Patterson write: "We want to compliment you on your double-stitched shoes. We have been selling shoes for about 30 years, and your shoes give the best general satisfaction of any shoes in the line of a work shoe we have ever sold." Eberly & Son write: "We have just learned the true worth of your goods, and will use large quantities of them." Montzahn & Wright write: "We think your double stitched shoes give the best general satisfaction of any work shoe we have ever handled. They are easy on the feet, do not rip, and sell readily." Send for a 12 pair case on trial.

THOS. RYAN, WHOLESALE DEALER
WINNIPEG

Boots, Shoes and Rubbers

NOW SHIPPING SPRING ORDERS

Merchants desiring samples and prices let us quote you our best selling lines in Split, Grain, Buff, Pebble, Dougola, Kangaroo and Reindeer.

THE AMES HOLDEN CO. LTD.
WINNIPEG.

Letter Orders shipped same day received.

LOCK BROS. & Co.

WHOLESALE...

FRUIT AND PRODUCE

(Anything in the Fruit Line)

WE WANT YOUR PRODUCE:

123 PRINCESS ST., WINNIPEG.
RAT PORTAGE.

No Uncertainty



IN BUYING FROM OUR SAMPLES FOR SPRING

The trade have the satisfaction in knowing there is no uncertainty with regard to style or values.

Letter orders shipped same day as received.

THE GAULT BROS. CO. Limited

WHOLESALE DRY GOODS

WINNIPEG

Sole Agents for "Fowens Gloves" in Canada.

IF...

You wish to increase your business and popularity, you MUST please your lady customers.

You cannot do this if you don't have the right goods. WE HAVE JUST THE KIND TO DO IT.

Our Assortment of

BLACK AND FANCY BLACK DRESS GOODS

comprising over 40 RANGES, at prices to sell at 20c to \$4.00 per yd. We can suit you in quality, design and values. TRY US AND BE CONVINCED.

R. J. WHITLA & CO.

Wholesale Dry Goods
WINNIPEG.

THE RUBLEE FRUIT CO. Limited

Importers of...

Foreign and Domestic Green and Dried Fruits, Nuts, Etc.

151 Bannatyne Street, WINNIPEG, MAN.
12th Street, BRANDON, MAN.

Butter Paper

We have the best imported GENUINE VEGETABLE PARCHMENT, Waterproof and Airproof. Will not stick to the butter. Sizes 8x12, 12x18, 18x24, and 24x30.

Also BUTTER PLATES. Write for quotations.

McALLISTER & WATTS
43 Rennie St., Winnipeg.



Cor. Portage Ave. and Fort St.

We have increased our seating capacity to 240 and have now accommodation for 50 more students than last year. Our NORTH END BRANCH has accommodation for 60, making a total of 300 in both schools. We can find room for you if you decide upon a course with us. The best of instruction given by TEN COMPETENT and EXPERIENCED TEACHERS. New announcement ready. G. W. DONALD, Secretary.